

Rend Lake College

Institutional Data FY2013-FY2017



Vickie Schulte

468 N. Ken Gray Parkway, Ina, IL 62846

618.437.5321

www.rlc.edu

Contents

Mission	5
Value Statement.....	5
Institutional Outcomes.....	5
Who We Are.....	5
Who We Serve.....	5
Diversity of Culture	6
Common Outcome	6
The Organization	6
The District	7
District Population.....	8
Population by County.....	8
Unemployment Rates by County	8
District Economic Information	9
Employment Information.....	9
Institutional Data Book	13
The Students	13
The Faculty and Staff.....	13
Presidential Welcome	14
Board of Trustees	15
History of Rend Lake College Board of Trustees	16
Section 1 – Tuition and Fees	19
Tuition per Credit Hour	19
Tuition Comparison.....	19
Cost of Attendance.....	20
Lab/Course Fees.....	21
Miscellaneous fees and options.....	30
Special Program Fees:	30
Textbooks.....	30
Textbook Return Policy	30
Online and Hybrid Fee.....	30
Transcript Fee.....	30
Payment Plan	30
Non-Payment Fee.....	31

Parking and/or Speeding fines	31
Fines and Financial Obligations	31
Section II – Students.....	33
Headcount by Enrollment Status	33
Headcount by Enrollment Status (as percentage of total enrollment).....	33
Headcount attempted vs. Earned	34
Credit Hours	35
Credit Hours by Enrollment Status (Full-Time/Part-Time, duplicated).....	35
Total Credit Hours by Term	35
Total Credit Hours by Fiscal Year.....	35
FTE by Fiscal Year	35
Total Reimbursable Credit Hours (by term).....	36
Total Credit Hours by Fiscal Year (reimbursable).....	36
Credit Hours Attempted vs Credit Hours Earned	37
Dual Credit by FY and High School	38
Dual Credit by High School and Term	39
Dual Credit Textbook Savings Report.....	40
Dual Enrollment	43
Online Course Offerings/Enrollment.....	43
Hybrid Course Offerings/Enrollment	44
Section Size.....	45
Active Clubs	45
Academic Honors	46
Academic Warnings.....	46
Tutoring Center	47
Student Demographics.....	49
Students by Gender.....	49
Students by Age	49
Students by Ethnicity.....	49
Enrollment by Residency.....	50
Enrollment by State.....	50
Enrollment by County – In-District.....	51
Enrollment by County – Top 15 Counties	51
Students attending on Chargeback/Contractual Agreements.....	52

Enrollment by Student Level	55
Student by Generation	55
Enrollment by Student Intent	55
Veteran Status.....	55
Transfer Plan	56
Initial Enrollment by Degree/Certificate Objective.....	56
Initial Enrollment by PCS Code.....	56
Enrollment by GPA	57
Enrollment by Highest Degree Previously Earned	57
Section III: Financial Aid	59
Financial Aid by Award Type	59
Section IV: Retention, Completion, and Graduation Rates.....	61
Retention Rates.....	61
Completions	62
Total Completers.....	62
Completions by Gender	62
Completions by Ethnicity	62
Completions by Term	62
Completions by Degree/Certificate Type.....	63
Completion Detail by Degree/Certificate Type	64
Graduation Rates	68
Section V – Student Consumer Information	70
Security Report.....	70
Student Right To Know.....	72
Section VI – ICCB Facts and Figures.....	76
Summary Profile of the Illinois Public Community Colleges	76
ICCB Reimbursable Credit Hours – FY2015	77
ICCB – Summary of Opening Fall Term FTE Students – FY2006 – FY2015	78
ICCB Quick Facts.....	80
Section VII – Internal Affairs.....	83
Employees	83
Total Employees by Status	83
Instructional Employees.....	83
Student to Faculty Ratio.....	83

Rend Lake College Organizational Chart	84
Faculty/Staff Excellence Awards	87
Learning Resource Center	88
Information Technology	90
IT - Off Campus.....	94
IT - Murphy Wall.....	94
IT - RLC Market Place.....	94
RLC Grant Awards.....	96
Grants - FY 2017-2018.....	96

Mission

Rend Lake College provides educational opportunities across cultural and economic boundaries to the diverse student population we serve. We are committed to our students' success in achieving their educational goals and to meeting our community-focused program objectives. With Rend Lake College, student journeys start here.

Value Statement

In serving our students and community, we strive to be student-focused, authentic, and resourceful.

Institutional Outcomes

Rend Lake College has adopted four essential learner outcomes, fundamental learning objectives embedded in every program of study, that all degree-completing students should be able to demonstrate. They are as follows:

Critical Thinking: Demonstrate the ability to think in a self-directed, reflective manner when understanding, evaluating and solving problems.

Problem-Solving: Demonstrate the ability to resolve computational problems.

Oral Communication: Demonstrate the ability to communicate clearly, concisely, and effectively through verbal and non-verbal language.

Written Communication: Demonstrate the ability to communicate clearly, concisely, and effectively through written language.

Who We Are

The College history defines the College from the perspective of organization and assets; however, the personnel who operate within the college systems and manage those assets are the primary element for successful education. Rend Lake College believes all employees, regardless of their job description, are part of each student's education. Administrative, community outreach, student service, and physical plant personnel all support the student learning process. Our instructors are primary points of contact with the Rend Lake College educational experience. These educators are generally organized into five divisions: Allied Health; Applied Science & Technology; Community & Corporate Education; Liberal Arts; and Math & Sciences.

Whether in a supporting role or as a direct point of contact, each college employee draws upon professional expertise and academic accomplishment to promote the success of every student.

Who We Serve

Student-centered colleges are best defined by who they serve. An understanding of the distinctiveness of our College's student population allows us to effectively meet the goals of our programs and succeed in our mission.

Diversity of Culture

Traditionally, Rend Lake College can be characterized as serving a relatively homogenous, rural, small-town culture. This population's cultural distinctiveness is centered on age and socioeconomic status more than diverse ethnic origin. As global connectivity broadens, so too do Rend Lake College's program offerings. We continue to serve groups with diverse characteristics, such as:

- Age
- Disability
- Gender
- National origin
- Race/ethnicity
- Religion
- Socioeconomic status
- Special populations

Diversity of Purpose

Rend Lake College provides general, transfer, and career technical education to both traditional and non-traditional students through the use of reciprocal agreements; regional, state, and national education programs; dual-credit high school classes; and the endorsement of international students to help broaden our base. Rend Lake College offers skill and trade opportunities for students seeking employment and economic mobility. Additionally, Rend Lake College provides professional and personal fulfillment as well as growth through community and corporate education classes.

Often, an individual's purpose for engaging with the college is a combination of factors such as:

- Discovery / Curiosity
- Educational Requirements
- Enrichment / Hobby
- Healthy lifestyle
- Life-long learning
- New / Enhanced skills
- Retraining

Common Outcome

Regardless of the diverse cultural backgrounds, purposes or origins of our constituents, Rend Lake College serves each individual equally with an open admission policy and an opportunity for success. Furthermore, Rend Lake College is united by the shared commitment of students, faculty, staff, and community to meet its institutional, educational, and program objectives.

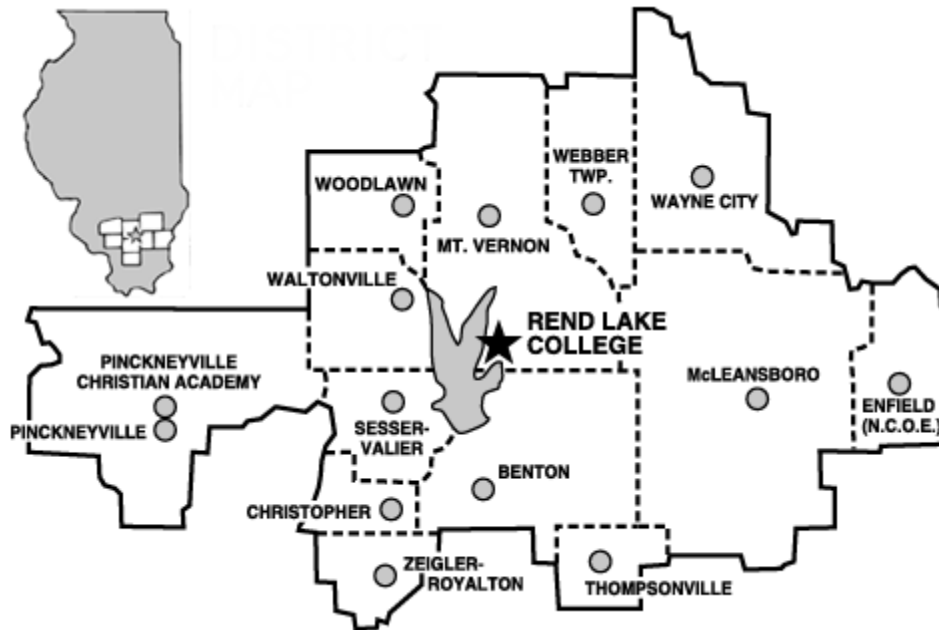
The Organization

Rend Lake College is located on the east shore of Rend Lake, the second-largest man-made lake in the state, with access provided by Interstate 57 and State Route 37. The college is centrally located within the community college district it serves.

Our district was established July 1, 1967, and covers portions of eight counties in Southern Illinois. The main campus is home to 18 buildings, with two satellite campuses, the Rend Lake College MarketPlace in Mt. Vernon and Rend Lake College Murphy-Wall Campus in Pinckneyville.

Rend Lake College is dedicated to providing its students with preparation for entry into the job market and a solid academic base for transferring to a baccalaureate-granting institution with the current offerings of 100+ degree and certificate programs.

The District



Community College District 521, as it is officially known, came into existence July 1, 1967. The district takes in parts of eight counties, including the major portion of Franklin, Hamilton, Jefferson and Perry counties. Large areas of Wayne and White counties are included, as are small portions of Washington and Williamson.

There are 13 public high schools served by the college:

- Benton Consolidated High School
- Christopher High School
- Hamilton County High School
- Mt. Vernon Township High School
- Norris City-Omaha-Enfield High School
- Pinckneyville Community High School
- Sesser-Valier High School
- Thompsonville High School
- Waltonville High School
- Wayne City High School
- Webber Township High School
- Woodlawn High School
- Zeigler-Royalton High School

District Population

Illinois Community College Board

A SUMMARY PROFILE OF THE ILLINOIS PUBLIC COMMUNITY COLLEGES

Dist.	District		District Size				2013 Tax Base EAV	2013 Tax Rates Extended			Student Enrollment		FY 15 Annual Tuition & Fee Charges
			# of Coll.	2013 Population Total	16 & Over	Square Miles		Educ. & O&M Rate	All Other Tax Rates	Total	Fall 2014 Headcount	Annual FY 14 FTE	
521	REND LAKE	Ina	1	89,588	72,274	1,850	\$ 846,478,346	25.86	31.13	56.99	2,970	2,693	\$3,000

Source: 2015 Data and Characteristics of the Illinois Public Community College System

Population by County

County	April 1, 2010 - Census	2011	2012	2013	2014	2015	2016
Franklin County, Illinois	39561	40012	39874	39574	39485	39427	39156
Hamilton County, Illinois	8457	8422	8372	8329	8295	8198	8061
Jefferson County, Illinois	38827	38759	38666	38657	38442	38390	38460
Perry County, Illinois	22350	22289	21862	21742	21558	21458	21357
Wayne County, Illinois	16760	16630	16624	16608	16532	16427	16396
White County, Illinois	14665	14596	14562	14502	14343	14349	14292
Washington County, Illinois	14716	14602	14618	14432	14394	14246	14154
Williamson County, Illinois	66357	66741	66793	67387	67350	67589	67560

Source: US Census Bureau/American Fact Finder

Unemployment Rates by County

Unemployment Rate by County					
	2013	2014	2015	2016	2017
Franklin	11.30%	8.80%	7.20%	7.40%	6.20%
Hamilton	7.50%	5.60%	4.70%	5.70%	4.60%
Jefferson	9.20%	7.20%	6.20%	5.80%	5.20%
Perry	10.70%	8.30%	6.90%	6.40%	5.60%
Wayne	7.30%	6.10%	6.80%	7.70%	5.90%
White	7.50%	5.80%	5.20%	6.30%	4.50%
Small Parts of:					
Washington	3.00%	4.70%	3.50%	3.40%	2.80%
Williamson	8.50%	7.00%	5.80%	5.60%	4.90%

Source: US Bureau of Labor Statistics

District Economic Information

Employment Information

Employment Status	Franklin County	Hamilton County	Jefferson County	Perry County	Wayne County	White County
# of Population 16 years and over	31953	6677	31012	17956	13155	11604
Population 16 years and over - In labor force	17250	3789	18218	9050	7950	6686
% of Population 16 years and over - In labor force	54.00%	56.70%	58.70%	50.40%	60.40%	57.60%
Population 16 years and over - Not in labor force	14703	2888	12794	8906	5205	4918
% of Population 16 years and over - Not in labor force	46.00%	43.30%	41.30%	49.60%	39.60%	42.40%
Unemployment Rate	10.00%	4.50%	9.20%	9.00%	5.30%	8.80%
# of Females 16 years and over	16507	3418	15027	8338	6661	5994
# of Females 16 years and over - In labor force - Employed	7383	1564	7909	3829	3331	2707
% of Females 16 years and over - In labor force- Employed	44.70%	45.80%	52.60%	45.90%	50.00%	45.20%

Method of Commuting To Work	Franklin County	Hamilton County	Jefferson County	Perry County	Wayne County	White County
# of Workers 16 years and over	15152	3539	16048	8145	7458	5905
Car, truck, or van -- drove alone	12736	2771	13255	6996	6176	4872
% Car, truck, or van -- drove alone	84.10%	7.83%	8.26%	8.59%	8.25%	8.25%
Car, truck, or van -- carpooled	1453	512	1422	724	638	591
% Car, truck, or van -- carpooled	9.60%	14.50%	8.90%	8.90%	8.60%	10.00%
Public transportation (excluding taxicab)	87	66	58	55	71	46
% Public transportation (excluding taxicab)	0.60%	19.00%	0.40%	0.70%	0.01%	0.80%
Walked	198	29	367	120	133	165
% Walked	1.30%	0.80%	2.30%	1.50%	1.80%	2.80%
Other means	222	10	342	44	68	23
% Other means	1.50%	0.30%	0.21%	0.50%	0.90%	0.40%
Worked at home	456	151	604	206	372	208
% Worked at home	3.00%	4.30%	3.80%	2.50%	5.00%	3.50%

Occupation	Franklin County	Hamilton County	Jefferson County	Perry County	Wayne County	White County
Civilian employed population 16 years and over	15510	3618	16528	8312	7523	6095
Management, business, science, and arts occupations	4177	930	4399	2053	2004	1559
% of Management, business, science, and arts occupations	26.90%	25.70%	26.60%	24.70%	26.60%	25.60%
Service occupations	3227	524	3276	1746	1137	1098
% - Service occupations	20.80%	14.50%	19.80%	21.00%	15.10%	18.00%
Sales and office occupations	3379	851	3885	1567	1607	1321
% - Sales and office occupations	21.80%	23.80%	23.50%	18.90%	21.40%	21.70%
Natural resources, construction, and maintenance occupations	1861	582	1528	1254	1006	948
% - Natural resources, construction, and maintenance occupations	12.00%	16.10%	9.20%	15.10%	13.40%	15.60%
Production, transportation, and material moving occupations	2866	731	3440	1692	1769	1169
% - Production, transportation, and material moving occupations	18.50%	20.20%	20.80%	20.40%	23.50%	19.20%

Industry	Franklin County	Hamilton County	Jefferson County	Perry County	Wayne County	White County
Civilian employed population 16 years and over	15510	3618	16528	8312	7523	6095
Agriculture, forestry, fishing and hunting, and mining	1069	609	476	489	704	874
% Agriculture, forestry, fishing and hunting, and mining	6.90%	16.80%	2.90%	5.90%	9.40%	14.30%
Construction	750	273	900	597	397	313
% Construction	4.80%	7.50%	5.40%	7.20%	5.30%	5.10%
Manufacturing	1986	402	2370	1406	1644	758
% Manufacturing	12.80%	11.10%	14.30%	16.90%	21.90%	12.40%
Wholesale trade	332	83	698	150	187	213
% Wholesale trade	2.10%	2.30%	4.20%	1.90%	2.50%	3.50%
Retail trade	2115	417	2446	914	843	591
% Retail trade	13.60%	11.50%	14.80%	11.00%	11.20%	9.70%
Transportation and warehousing, and utilities	791	303	988	480	469	453
% Transportation and warehousing, and utilities	5.10%	8.40%	6.00%	5.80%	6.20%	7.40%
Information	209	45	162	123	77	75
% Information	1.30%	1.20%	1.00%	1.50%	1.00%	1.20%
Finance and insurance, and real estate and rental and leasing	870	142	675	250	255	294
% Finance and insurance, and real estate and rental and leasing	5.60%	3.00%	4.10%	3.00%	3.40%	4.80%
Professional, scientific, and management, and administrative and waste management services	747	162	1065	354	397	268
% Professional, scientific, and management, and administrative and waste management services	4.80%	4.50%	6.40%	4.30%	5.30%	4.40%
Educational services, and health care and social assistance	4012	672	3947	2019	1582	1290
% Educational services, and health care and social assistance	25.90%	18.60%	23.90%	24.30%	21.00%	21.20%
Arts, entertainment, and recreation, and accommodation and food services	1176	180	1462	591	307	410
% Arts, entertainment, and recreation, and accommodation and food services	7.60%	5.00%	8.80%	7.10%	4.10%	6.70%
Other services, except public administration	696	171	715	439	362	311
% Other services, except public administration	4.50%	4.70%	4.30%	5.30%	4.80%	5.10%
Public administration	757	159	624	500	299	245
% Public administration	4.90%	4.40%	3.80%	6.00%	4.00%	4.00%

Class of Worker	Franklin County	Hamilton County	Jefferson County	Perry County	Wayne County	White County
Civilian employed population 16 years and over	15510	3618	16528	8312	7523	6095
Private wage and salary workers	11918	2856	13382	6294	5807	4721
% of Private wage and salary workers	76.80%	78.90%	81.00%	75.70%	77.20%	77.50%
Government workers	2537	421	1966	1515	1032	744
% of Government workers	16.40%	11.60%	11.90%	18.20%	13.70%	12.20%
Self-employed in own not incorporated business workers	1027	338	1156	471	681	616
% of Self-employed in own not incorporated business workers	6.60%	9.30%	7.00%	5.70%	9.10%	10.10%
Unpaid family workers	28	3	24	32	3	14
% of Unpaid family workers	0.20%	10.00%	10.00%	0.40%	10.00%	0.20%

INCOME AND BENEFITS						
Total Households (on 2015 Inflation Adjusted Dollars)	Franklin County	Hamilton County	Jefferson County	Perry County	Wayne County	White County
Total households	16257	3473	15277	8025	7043	6171
Total households - Less than \$10,000	1741	265	1327	863	372	528
% of Total households - Less than \$10,000	10.70%	7.60%	8.70%	10.80%	5.30%	8.60%
Total households - \$10,000 to \$14,999	901	299	1047	454	610	438
% of Total households - \$10,000 to \$14,999	5.50%	8.60%	6.90%	5.70%	8.70%	7.10%
Total households - \$15,000 to \$24,999	2430	530	2189	1170	924	709
% of Total households - \$15,000 to \$24,999	14.90%	15.30%	14.30%	14.60%	13.10%	11.50%
Total households - \$25,000 to \$34,999	2116	300	1701	875	879	792
% of Total households - \$25,000 to \$34,999	13.00%	8.60%	11.10%	10.90%	12.50%	12.80%
Total households - \$35,000 to \$49,999	2475	436	2345	1164	1157	891
% of Total households - \$35,000 to \$49,999	15.20%	12.60%	15.30%	14.50%	16.40%	14.40%
Total households - \$50,000 to \$74,999	3218	676	2771	1665	1378	1179
% of Total households - \$50,000 to \$74,999	19.80%	19.50%	18.10%	20.70%	19.60%	19.10%
Total households - \$75,000 to \$99,999	1515	375	1611	811	844	863
% of Total households - \$75,000 to \$99,999	9.30%	10.80%	10.50%	10.10%	12.00%	14.00%
Total households - \$100,000 to \$149,999	1471	457	1613	762	638	482
% of Total households - \$100,000 to \$149,999	9.00%	13.20%	10.60%	9.50%	9.10%	7.80%
Total households - \$150,000 to \$199,999	228	95	380	150	125	144
% of Total households - \$150,000 to \$199,999	1.40%	2.70%	2.50%	1.90%	1.80%	2.30%
Total households - \$200,000 or more	162	40	293	111	116	145
% of Total households - \$200,000 or more	1.00%	1.20%	1.90%	1.40%	1.60%	2.30%

Income and Benefits- Households (IN 2015 INFLATION-ADJUSTED DOLLARS)	Franklin County	Hamilton County	Jefferson County	Perry County	Wayne County	White County
Total households - Median household income (dollars)	\$ 39,512	\$ 44,159	\$ 43,247	\$ 42,478	\$ 44,993	\$ 44,648
Total households - Mean household income (dollars)	\$ 50,850	\$ 57,307	\$ 57,328	\$ 56,407	\$ 55,681	\$ 59,300
With earnings(dollars)	\$ 10,708	\$ 2,383	\$ 11,003	\$ 5,578	\$ 4,929	\$ 4,363
Percent - With earnings	65.90%	68.60%	72.00%	69.50%	70.00%	70.70%
With earnings - Mean earnings (dollars)	\$ 53,348	\$ 61,219	\$ 58,090	\$ 56,264	\$ 57,622	\$ 60,896
With Social Security	\$ 6,375	\$ 1,419	\$ 5,405	\$ 3,031	\$ 2,576	\$ 2,419
Percent - With Social Security	39.20%	40.90%	35.40%	37.80%	36.60%	39.20%
With Social Security - Mean Social Security income (dollars)	\$ 16,998	\$ 15,678	\$ 17,134	\$ 17,339	\$ 17,220	\$ 17,757
With retirement income	4393	758	3181	2110	1344	1096
%- With retirement income	27.00%	21.80%	20.80%	26.30%	19.10%	17.80%
With retirement income - Mean retirement income (dollars)	\$ 18,244	\$ 19,695	\$ 24,398	\$ 16,726	\$ 16,927	\$ 20,526
With Supplemental Security Income	1335	194	908	469	312	304
% - With Supplemental Security Income	8.20%	5.60%	5.90%	5.80%	4.40%	4.90%
With Supplemental Security Income - Mean Supplemental Security Income (dollars)	\$ 8,886	\$ 7,576	\$ 8,810	\$ 7,644	\$ 10,055	\$ 8,686
With cash public assistance income	418	38	367	290	157	116
% - With cash public assistance income	2.60%	1.10%	2.40%	3.60%	2.20%	1.90%
With cash public assistance income - Mean cash public assistance income (dollars)	\$ 3,543	\$ 2,592	\$ 2,183	\$ 2,617	\$ 3,013	\$ 3,789
With Food Stamp/SNAP benefits in the past 12 months	3079	431	2815	1382	925	879
% With Food Stamp/SNAP benefits in the past 12 months	18.90%	12.40%	18.40%	17.20%	13.10%	14.20%

Percentage of Families and People whose income in the past 12 months fell below the poverty level	Franklin County	Hamilton County	Jefferson County	Perry County	Wayne County	White County
All families	13.40%	10.60%	12.30%	11.70%	11.60%	9.60%
All families With related children of the householder under 18 years	25.20%	15.60%	22.00%	21.70%	21.50%	18.00%
All families With related children of the householder under 18 years With related children of the householder under 5 years only	30.50%	0.70%	29.90%	22.80%	15.00%	41.80%
Married couple families	5.80%	6.00%	5.80%	390.00%	7.20%	2.50%
Married couple families With related children of the householder under 18 years	10.30%	6.70%	10.60%	5.20%	14.20%	4.20%
Married couple families With related children of the householder under 18 years With related children of the householder under 5 years only	7.70%	0.00%	14.30%	1.70%	5.20%	1.60%
Families with female householder, no husband present	41.90%	43.80%	38.10%	44.40%	34.60%	47.50%
Families with female householder No husband present With related children of the householder under 18 years	56.00%	67.40%	47.60%	58.60%	51.20%	59.10%
Families with female householder No husband present With related children of the householder under 18 years With related children of the householder under 5 years only	74.20%	100.00%	68.40%	78.20%	41.90%	95.30%
All people	18.50%	14.80%	17.00%	17.20%	14.50%	13.60%
Under 18 years	26.30%	16.00%	26.20%	27.30%	24.00%	17.70%
Under 18 years Related children of the householder under 18 years	25.80%	15.30%	26.10%	27.20%	23.70%	17.60%
Under 18 years Related children of the householder under 18 years Related children of the householder under 5 years	33.30%	12.90%	32.30%	23.40%	23.00%	28.10%
Under 18 years Related children of the householder under 18 years Related children of the householder 5 to 17 years	23.10%	16.10%	23.70%	28.40%	24.00%	13.20%
18 years and over	16.20%	14.10%	14.30%	14.40%	11.80%	12.50%
18 to 64 years	18.60%	14.70%	15.30%	16.30%	14.00%	14.40%
65 years and over	8.70%	13.50%	10.60%	7.90%	5.40%	7.00%
65 years and over People in families	14.90%	10.90%	14.10%	13.40%	13.20%	9.70%

Source: U.S. Census Bureau, 2011-2015 American Community Survey 5-Year Estimates

Institutional Data Book

The Rend Lake College Institutional Data Book is organized into six sections: Tuition and Fees; Students; Financial Aid; Retention, Completion and Graduation Rates; Facilities; and Internal Affairs. An electronic version of the Data Book is available on our website at www.rlc.edu.

The Data Book is compiled by using information from the Illinois Community College Board, IPEDS and the Department of Education, as well as our internal student information system, PowerCampus, an Ellucian product, and information collected from our division and department supervisors.

The Students

Community colleges serve close to half of the undergraduate students in the United States. The comprehensive mission of community colleges makes them attractive to a broad range of people who seek particular programs or special opportunities of interest.

Rend Lake College students are from over 53 states and territories. We have attracted Illinois students from over 15 counties.

We are proud to provide access to education for many traditional as well as non-traditional students, such as adults who are working while enrolled. We continue to serve an increasing number of traditional-age students and high school students who take specific courses to get a head start in their college educational goals.

Rend Lake College is a diverse institution that serves a variety of needs. Our students include those that are attending to upgrade their skills for a particular job, students who are pursuing an associate degree or certificate, students who are planning to transfer to a 4-year institution, and students who are pursuing a hobby or personal interest.

The Faculty and Staff

The faculty and staff are honestly committed to providing the education and services that our students deserve. Students are far more than simply numbers at Rend Lake College.

We rely on a blend of full-time and part-time faculty to offer a broad array of courses to meet varying student curricular and scheduling needs. Adjunct faculty members have been a part of our faculty due to their technical skills and practical knowledge that are beneficial to our students. We value their expertise and workplace experiences to keep curricula fresh.

Staff form the backbone of all community colleges. Without the technical, professional, and clerical staff, our institution would not be able to perform the vital function of educating and assisting our students.

Presidential Welcome

From Terry Wilkerson, President of Rend Lake College

As Rend Lake College approaches its 50th anniversary, our reason for being here remains the same as it was in the summer of 1967. We are here to help put higher education and career training into the hands of the people of our community, and we will continue doing that same thing into the far future.

Even though economic times have been tough in recent years, we have continued to innovate and grow to provide the programs and curricula our area needs. RLC continues to be the starting point each year for many students who want to transfer on to a four-year university or to train for a career without incurring a heavy debt load. We believe education should be available to everyone. Many of our students receive financial aid in some form, and Rend Lake College's low tuition rates make college education much more affordable.

In addition to price, we have made it a point to improve access over the years. This includes the establishment of the RLC Murphy-Wall Pinckneyville Campus and the RLC MarketPlace in Mt. Vernon, and just as importantly, the implementation of a growing number of online offerings. These things have resulted in increased convenience for our students.

I believe in the mission of community colleges, and Rend Lake College and its counterparts nationwide are being recognized for the service and value they provide. We are regarded more and more as the first choice for college-bound students, and we also are the place to which people turn when they need a new start.

As educators, we want and expect great things from our students, but it's also our job to hold ourselves accountable to you. This will sound familiar to some of you, but it's worth saying again: You're not a number to us. We want you here. We want to help you get to where you're going. Never doubt it.



Terry Wilkerson President



Board of Trustees

Board Year 2017
Eric Black
David Asbery
Randall Crocker
John Kabat
Larry Manning
Rick Marlow
Randy Rubenacker
Student Trustee
Grace Pytlinski

Board Year 2016
Eric Black
David Asbery
Randall Crocker
John Kabat
Larry Manning
Rick Marlow
Randy Rubenacker
Student Trustee
Eric Schumm

Board Year 2015
Eric Black
David Asbery
Randall Crocker
John Kabat
Larry Manning
Rick Marlow
Randy Rubenacker
Student Trustee
Claire Pytlinski

Board Year 2014
Eric Black
Ed Cunningham*
John Kabat
Larry Manning
Rick Marlow
Randy Rubenacker
David Asbery
Randall Crocker
*In July, Dr. David Asbery replaced Ed Cunningham
Randall Crocker was added to the board
Student Trustee
Elijah Liske

Board Year 2013
Brian Drew*
Larry Manning
Eric Black
Randy Rubenacker
John Kabat
Rick Marlow
David Asbery
Randall Crocker*
*Bryan Drew left the Board in 11/13 and
Randall Crocker was added in 12/13
Student Trustee
Kody Schwartz

History of Rend Lake College Board of Trustees

* 1966 - 1979

Dr. Allen Y. Baker
(Pinckneyville)

Elected to 1-yr. term; re-elected
to 3-year terms four times

* 1966 - 1978

Carleton Apple (Enfield)

Elected to 3-yr. term; re-elected
to 3-yr. terms three more times

* 1966 - 1972

Melvin Farlow
(McLeansboro)

Elected to 3-year term;
re-elected in 1969; Board
President suffered heart attack
in '70, continued to serve but
declined leadership role in '71

* 1966 - 1972

Harry N. Irwin (Wayne City)
Elected to 3-year term

* 1966 - 1971

Dr. Curtis A. Parker
(Mt. Vernon)

Elected to 2-yr. term; re-elected
to 3-year term in 1968

* 1966 - 1969

Holland Simmons
(Benton)

Elected to 2-yr. term; re-elected
to 3-yr. term in 1968; Drowned
in boating accident July 27, '69

* 1966 - 1969

Forrest Stewart (Texico)

Elected to 1-yr. term; re-elected
to 3-year term in 1967; moved
out of district during 2nd term

* 1969 - 1973

Huel Cross (Belle Rive)

Appointed August 11 to fill
position held by F. Stewart;
elected to 3-year term in 1970

* 1969 - 1977

Marie Simmons (Benton)

Appointed August 19 to fill
position held by late husband;
elected to 1-year unexpired
term in 1970; re-elected twice

* 1971 - 1976

Albert Gulley (Benton)

Elected to fill position held
previously by C. Parker;
re-elected to 3-yr. term in 1974,
vacated seat August 4, 1976

* 1972 - 1978

B.B. Connaway
(McLeansboro)

Elected to 3-year term;
re-elected to 3-yr. term in 1975

* 1972 - 1975

William L. Moore
(Mt. Vernon)

Elected to 3-year term

* 1973 - 1976

David Skorch (Dix)

Elected to 3-year term

* 1975 - 1976

O.K. Ausmus (Benton)

Elected to 3-year term; moved
out of state in Year Two

* 1976 - 1986

Joseph A. McClure Jr.
(Mt. Vernon)

Appointed June 15 to fill
position held by O.K. Ausmus;
elected to 1-yr. unexpired term
in 1977; re-elected three times;
resigned October 21, 1986

* 1976 - 1999

Dr. W. Richard Simpson
(Benton)

Appointed August 17 to fill
position held by A. Gulley;
elected 1977; re-elected twice
to 3-year terms; re-elected to
5-yr. term in 1980; re-elected
to 6-year term in 1985; reelected
to 2-year term in 1997

* 1976 - 1978

Dr. Clyde R. Funkhouser
(Mt. Vernon)

Elected to 3-year term;
resigned May 16, 1978

* 1977 - 1989

Everett K. Thompson
(Sesser)

Elected to 3-year term;
re-elected to 5-yr. term in 1980;
re-elected to 6-yr. term in 1985;
resigned in 1989

* 1978 - 2013

Marvin W. Scott (Belle Rive)

Appointed May 16 to fill position
held by C. Funkhouser; elected
to unexpired 4-year term in '79;
re-elected to 6-year terms five
more times

* 1978 - 1993

Joe H. Scrivner (Mt. Vernon)

Elected to 3-year term;
re-elected to 6-yr. terms twice

* 1978 - 1985

Richard E. Herrin (Benton)

Elected to 3-yr. term; re-elected
to 6-yr. term; resigned August 20
when moved out of district

* 1979 - 2001

Dr. Allan D. Patton (Zeigler)

Elected to 3-yr. term, extended
to 4 years; re-elected to three
6-year terms

* 1985 - 1999

Dr. B. Kirby Browning
(Benton)

Appointed August 20 to fill
position held by R. Herrin;
elected to 6-year terms twice

* 1986 - 1987

Mark J. Ballard
(Mt. Vernon)

Appointed October 21 to fill
position held by Joe McClure

* 1987 - 1988

David K. Dalby (Benton)

Elected to 6-yr. term; resigned
five months later on April 19

* 1988 - 1989

David Hurley (Benton)

Appointed May 17 to fill position
held by D. Dalby; chose not to
run for unexpired 4-year term

* 1989 - 1997

Robert J. Kirkpatrick

(Sesser)

Appointed to fill position held by E. Thompson; elected in '89 to unexpired two-year term; re-elected to 6-year term

* 1989 - 1994

Olie Musgrave (Mt. Vernon)

Elected to unexpired 4-year term; elected to 6-year term in 1993; resigned December 20 and moved out of district

* 1993 - 2011

William David Edmison

(Mt. Vernon)

Elected to three 6-year terms

* 1994 - 1996

Jim Hinman (Mt. Vernon)

Appointed December 20 to fill position held by O. Musgrave; elected to unexpired 4-year term in 1995; died May 30, 1996

* 1996 - 1997

Caroline Quinn (Mt. Vernon)

Appointed June 11 to fill position held by J. Hinman; chose not to run in November 1997 election

* 1997 - 2009

Hunt Bonan

(McLeansboro / Mt. Vernon)

Elected to two 6-year terms

* 1997 - 2009

Randall Crocker (Sesser)

Elected to two 6-year terms
[Also see 2013-15]

* 1999 - 2005

Courtney Cox (Benton)

Elected to 5 1/2-year term; Resigned position just months after re-election for 6-years

* 1999 - 2000

Dennis McEnaney

(Mt. Vernon)

Elected to 5 1/2-year term; moved out of district

* 2000 - 2001

Sam Mateer (Mt. Vernon)

Appointed March 14 to fill position held by D. McEnaney; chose not to run in November election

* 2001 - 2011

William "Bill" Simpson

(Benton)

Appointed September 18 to replace Dr. Allan Patton; already duly elected to assume seat in November; re-elected to 6-year term

* 2001 - 2008

Norma O'Daniel

(Mt. Vernon)

Elected to unexpired 4-year term; re-elected to 6-year term; resigned due to health

* 2005 - 2013

Bryan Drew (Benton)

Appointed to fill position held by Courtney Cox; twice elected to 6-yr. terms; November resignation following April election

* 2008 - 2013

Ed Cunningham (Mt. Vernon)

Appointed to fill position held by N. O'Daniel; elected to 6-yr. term in '09; moved out of district

* 2009 - 2017

Rick Marlow (Mt. Vernon)

Elected to fill original, two-year unexpired term of N. O'Daniel; re-elected to 6-year term

* 2009 - 2010

Dr. Donald E. Mitchell

(McLeansboro)

Elected to six-year term, but stepped down over possible conflict of interest

* 2010 - 2011

Kelly Woodrow

(Hamilton County)

Appointed to fill position held by D. Mitchell; chose not to run

* 2011 - 2017

John Kabat (Scheller)

Elected to 6-year term

* 2011 - 2017

Randy Rubenacker

(McLeansboro)

Elected to 6-year term

* 2011 - 2021

Eric Black (Mt. Vernon)

Elected to fill unexpired 4-year term of K. Woodrow; re-elected to 6-year term

* 2013 - 2019

Larry Manning

(Belle Rive)

Elected to 6-year term

* 2013 - 2021

Dr. David S. Asbery

(Mt. Vernon)

Appointed to fill position held by Ed Cunningham; elected to six-year term in 2015

* 2013 - 2019

Randall Crocker (Sesser)

Appointed to fill unexpired term of Drew; elected in 2015 to fill unexpired 4-year term
[Also see 1997-2009]

Rend Lake College
Institutional Data
Section 1: Tuition and Fees

Section 1 – Tuition and Fees

Current tuition rates for residents of the Rend Lake College district are published on our website, <https://www.rlc.edu/tuition>, and are published in our course schedules. Tuition rates are subject to change with Board of Trustees approval.

Applicable fees, in addition to tuition, will also be charged to students who are associated with certain classes/programs.

In-district residents who are 60 years of age or older qualify as senior citizens, and are entitled to take college credit courses tuition-free. This does not include any fees charged for credit classes, nor does it include Community Education classes.

Tuition per Credit Hour

Tuition per Credit Hour					
	FY2013	FY2014	FY2015	FY2016	FY2017
In-District	\$ 93.00	\$95.00	\$95.00	\$95.00	\$110.00
Required Fees	\$ 3.00	\$3.00	\$5.00	\$15.00	\$15.00
Total Tuition & Fees	\$ 96.00	\$98.00	\$100.00	\$110.00	\$125.00
Out of District	\$ 142.50	\$148.50	\$148.50	\$148.50	\$175.00
Required Fees	\$ 3.00	\$3.00	\$5.00	\$15.00	\$15.00
Total Tuition & Fees	\$ 145.50	\$151.50	\$153.50	\$163.50	\$190.00
Out of State	\$ 150.00	\$150.00	\$150.00	\$150.00	\$200.00
Required Fees	\$ 3.00	\$3.00	\$5.00	\$15.00	\$15.00
Total Tuition & Fees	\$ 153.00	\$153.00	\$155.00	\$165.00	\$215.00
Out of Country	\$ 150.00	\$150.00	\$150.00	\$150.00	\$200.00
Required Fees	\$ 3.00	\$3.00	\$5.00	\$15.00	\$15.00
Total Tuition & Fees	\$ 153.00	\$153.00	\$155.00	\$165.00	\$215.00

Source: Business Office – Tuition and Fee rate schedule

Tuition Comparison

	2013	2014	2015	2016	2017
IECC	\$74.00	\$77.00	\$83.00	\$83.00	\$83.00
John A Logan	\$92.00	\$97.00	\$99.00	\$109.00	\$115.00
Rend Lake	\$93.00	\$95.00	\$95.00	\$95.00	\$110.00
Shawnee	\$95.00	\$95.00	\$99.00	\$109.00	\$109.00
Southeastern	\$88.00	\$91.00	\$92.00	\$94.00	\$99.00
SWIC	\$99.00	\$103.00	\$106.00	\$109.00	\$109.00

*Tuition only – does not include fees

Cost of Attendance

The student budget for the year used to estimate Cost of Attendance is as follows for a full-time, in-district student during the nine-month school year. Room, board, transportation, and miscellaneous expenses vary greatly with each student's individual situation. However, for financial aid purposes, these costs are/were estimated as follows:

Cost of Attendance for full-time, first-time, degree/certificate seeking undergraduate

	2011	2012	2013	2014	2015	2016
In District (Books and Supplies)	\$ 3,690	\$ 3,735	\$ 4,222	\$ 4,000	\$ 4,800	\$ 5,550
Out of District (Books and Supplies)	\$ 5,175	\$ 5,220	\$ 5,838	\$ 5,605	\$ 6,405	\$ 7,500
Out of State (Books and Supplies)	\$ 5,700	\$ 5,445	\$ 5,886	\$ 5,650	\$ 6,450	\$ 8,250
Off-campus in-district (not with family) (total)	\$ 15,372	\$ 15,417	\$ 15,904	\$ 16,400	\$ 17,090	\$ 17,800
Off-campus out of district (not with family) (total)	\$ 16,857	\$ 16,902	\$ 17,520	\$ 18,005	\$ 18,695	\$ 19,750
Off-campus out of state (not with family) (total)	\$ 17,382	\$ 17,127	\$ 17,568	\$ 18,050	\$ 18,740	\$ 20,500
Off-campus in-district (with family) (total)	\$ 7,760	\$ 7,805	\$ 8,292	\$ 8,400	\$ 8,725	\$ 9,850
Off-campus out of district (with family) (total)	\$ 9,245	\$ 9,290	\$ 9,908	\$ 10,005	\$ 10,330	\$ 11,800
Off-campus out of state (with family) (total)	\$ 9,770	\$ 9,515	\$ 9,956	\$ 10,050	\$ 10,375	\$ 12,550

Source: NCES Education Statistics, IPEDS Data Center, RLC 148256

** Off campus, not with family includes room and board and other expenses

Lab/Course Fees

Policy & Procedure Manual: 6.7 FEES - Section 6 (j) "Course Fees" 2.2017			
COURSE FEES	COURSE #	COURSE TITLE	JUSTIFICATION
\$40.00	AGRI 1203	Ignitions & Elect. Systems	Supplies and Equipment
\$50.00	AGRI 1204	Physics of Hydraulics	Supplies and Equipment
\$110.00	AGRI 1205	Assembly, Adjust, Reconditioning Farm Equip.	Supplies and Equipment
\$60.00	AGRI 1206	Ag Air Conditioning Systems	Supplies and Equipment
\$110.00	AGRI 1208	Diesel Engines	Supplies and Equipment
\$30.00	AGRI 1210	Supervised Occupational Experience	Handouts and Travel
\$60.00	AGRI 1215	Small Engines	Supplies and Equipment
\$55.00	AGRI 1242	Microcomputers in Agriculture	Software
\$15.00	AGRI 1285	Agriculture Technologies	Software and Supplies
\$60.00	AGRI 2201	Transmissions & Power Trains	Supplies and Equipment
\$110.00	AGRI 2204	Adv. Major Overhaul	Supplies and Equipment
\$30.00	AGRI 2210	Supervised Agricultural Occupational Experience	Handouts and Travel
\$15.00	AGRI 2242	Marketing Agricultural Products	Software
\$10.00	ALH 1200	Introduction to Pharmacology	Supplies
\$25.00	ARCH 1201	Architectural Materials and Methods I	Supply Paper and Handouts
\$25.00	ARCH 1202	Architectural Materials and Methods II	Supply Paper and Handouts
\$20.00	ARCH 1203	Drawing Fundamentals	Supply Paper and Handouts
\$25.00	ARCH 1205	Introduction to Architectural Drawing	Supply Paper and Handouts
\$20.00	ARCH 1206	Architecture Independent Study	Supplies
\$35.00	ARCH 1208	Architectural Technology	Supply Paper and Handouts
\$35.00	ARCH 1209	Architectural Building Technology	Computers, Plotters and Supplies
\$25.00	ARCH 1601	Computer Applications-Architecture	Computers, Plotters and Supplies
\$15.00	ARCH 1602	Intro to 3D-Studio Max	Computers, Plotters and Supplies
\$20.00	ARCH 2203	Site Surveying	Survey Equipment
\$60.00	ARCH 2206	Architectural Drawing & Design	Computers, Software and Supplies
\$45.00	ARCH 2207	Architectural Rendering	Supply Paper, Handouts and Materials
\$30.00	ARCH 2210	Architectural Internship	Handouts and Travel
\$25.00	ARCH 2212	Architectural Project	Computers, Plotters and Supplies
\$45.00	ARCH 2216	Architecture/Engineering Project	Computers, Plotters and Supplies
\$35.00	ARCH 2218	Site Planning	Supply Paper, Handouts and Materials
\$55.00	ARCH 2225	Construction Systems	Building Materials
\$45.00	ARCH 2226	Architectural Documents/Estimating	Computers and Handouts
\$25.00	ART 1101	Art Appreciation	Art Supplies
\$50.00	ART 1103	Design I	Studio Supplies
\$75.00	ART 1104	Design II	Studio Supplies
\$50.00	ART 1105	Drawing I	Studio Supplies
\$50.00	ART 1106	Drawing II	Studio Supplies and Model
\$50.00	ART 1107	Painting I	Studio Supplies
\$50.00	ART 1108	Painting II	Studio Supplies
\$75.00	ART 1111	Photography I	Printing Supplies
\$75.00	ART 1112	Photography II	Printing Supplies
\$75.00	ART 2105	Sculpture I	Studio Supplies and Kilns
\$75.00	ART 2106	Sculpture II	Studio Supplies and Kilns
\$75.00	ART 2108	Beginning Jewelry	Studio Supplies
\$75.00	ART 2109	Advanced Jewelry	Studio Supplies
\$75.00	ART 2113	Introduction to Ceramics	Studio Supplies and Kilns
\$75.00	ART 2114	Advanced Ceramics	Studio Supplies and Kilns
\$75.00	ART 2115	Printmaking I	Supplies and Equipment
\$75.00	ART 2116	Printmaking II	Supplies and Equipment
\$75.00	ART 2120	Life Drawing	Studio Supplies and Model
\$100.00	ART 2121	Introduction to Stained Glass	Supplies and Tools
\$100.00	ART 2201	Illustration I	Studio Supplies
\$100.00	ART 2202	Illustration II	Studio Supplies
\$25.00	AST 1101	Introduction to Astronomy I	Supplies and Equipment
\$110.00	AUTO 1202	Engine Repair	Supplies and Equipment
\$30.00	AUTO 1210	Supervised Occupational Experience	Handouts and Travel
\$30.00	AUTO 1231	Intro to Automotive Technology	Supplies and Equipment
\$55.00	AUTO 1232	Auto Electrical Systems A	Supplies and Equipment

COURSE FEES	COURSE #	COURSE TITLE	JUSTIFICATION
\$55.00	AUTO 1235	Engine Performance A	Supplies and Equipment
\$55.00	AUTO 1240	Auto Air Conditioning	Supplies and Equipment
\$55.00	AUTO 1245	Braking System	Supplies and Equipment
\$20.00	AUTO 1249	Automotive Maintenance	Supplies and Equipment
\$165.00	AUTO 1266	Ford MLR	Computers and Ford Fee
\$20.00	AUTO 1604	Small Gasoline Engines	Supplies and Equipment
\$20.00	AUTO 1609	Small Engine Repair	Supplies and Equipment
\$50.00	AUTO 2214	Automatic Trans/Transaxle	Supplies and Equipment
\$25.00	AUTO 2215	Manual Drive Train and Axles	Supplies and Equipment
\$55.00	AUTO 2230	Auto Electrical Systems B	Supplies and Equipment
\$55.00	AUTO 2232	Engine Performance C	Supplies and Equipment
\$55.00	AUTO 2245	Suspension and Steering	Supplies and Equipment
\$55.00	AUTO 2250	Automotive Computer Electronics	Supplies and Equipment
\$45.00	BIO 1100	Biology for Non-Majors	Supplies and Equipment
\$55.00	BIO 1101	College Biology	Supplies and Equipment
\$45.00	BIO 1102	Environmental Ecology	Supplies and Equipment
\$60.00	BIO 1104	College Biology II	Supplies and Equipment
\$25.00	BME 1201	Introduction to Biomed Tech	Supplies and Equipment
\$25.00	BME 1202	Biomedical Electronics Devices	Supplies and Equipment
\$25.00	BME 1203	Intro to Radiography Biomed	Supplies and Equipment
\$75.00	BME 1204	Biomed Internship I	Travel, Drug Screen and Liability Insurance
\$25.00	BME 1205	Advanced Medical Electronics	Supplies and Equipment
\$75.00	BME 1206	Biomed Internship II	Travel, Drug Screen and Liability Insurance
\$55.00	BOT 1101	General Botany	Supplies and Equipment
\$35.00	CAD 1201	Introduction to CAD	Computers, Plotters and Supplies
\$35.00	CAD 1203	CAD Applications - Architectural	Computers, Plotters and Supplies
\$35.00	CAD 1204	CAD Applications - Mechanical	Computers, Plotters and Supplies
\$35.00	CAD 1205	CAD Applications - Civil	Computers, Plotters and Supplies
\$35.00	CAD 1208	CAD Applications - 3D	Computers, Plotters and Supplies
\$35.00	CAD 1210	CAD Applications for Work Place	Computers, Plotters and Supplies
\$55.00	CHE 1101	General Chemistry I	Supplies and Equipment
\$55.00	CHE 1102	General Chemistry II	Supplies and Equipment
\$55.00	CHE 1103	Inorganic Chemistry	Supplies and Equipment
\$55.00	CHE 1104	Qualitative Analysis Inorganic Chemistry	Supplies and Equipment
\$55.00	CHE 2120	Organic Chemistry I	Supplies and Equipment
\$55.00	CHE 2121	Organic Chemistry II	Supplies and Equipment
\$325.00	CLTE 1606	Asbestos Abatement Worker	Supplies
\$25.00	CMA 1202	Patient Care I	Supplies
\$25.00	CMA 1206	Patient Care II	Supplies
\$100.00	CMA 1207	Practicum	Travel, Drug Screen and Liability Insurance
\$50.00	CNA 1201	Basic Nurse Assistant (CNA)	Supplies, Equipment, Liability Insurance
\$55.00	CNS 1210	Introduction to Networks	Software, Supplies and Equipment
\$110.00	CNS 1212	Microcomp Hardware/Operating System	Software and Equipment
\$55.00	CNS 1213	Computer Technologies	Software
\$30.00	CNS 1218	Networking Basics	Software, Supplies and Equipment
\$30.00	CNS 1219	Routers and Routing Basics	Software, Supplies and Equipment
\$110.00	CNS 1221	Network Router Technology	Software, Supplies and Equipment
\$110.00	CNS 1224	Operating Systems	Software and Equipment
\$110.00	CNS 1231	Windows XP Professional	Software and Equipment
\$110.00	CNS 1232	Windows XP Server	Software and Equipment
\$110.00	CNS 1234	Linux Networking	Equipment
\$110.00	CNS 1235	Linux Server	Equipment
\$45.00	CNS 1240	Digital Fundamentals	Supplies and Equipment
\$110.00	CNS 2224	LAN Switching	Software, Supplies and Equipment
\$110.00	CNS 2228	Network Security	Equipment
\$110.00	CNS 2230	Network Implementation	Software
\$400.00	COSM 1202	Barber/Cosmetology Clinic I	Supplies and Equipment
\$400.00	COSM 1204	Cosmetology Clinic II	Supplies and Equipment
\$400.00	COSM 1208	Barber Clinic II	Supplies and Equipment

COURSE FEES	COURSE #	COURSE TITLE	JUSTIFICATION
\$200.00	COSM 1209	Cosmetology/Barber Refresher	Supplies and Equipment
\$110.00	COSM 1216	Nail Technology Clinic I	Supplies and Equipment
\$110.00	COSM 1218	Nail Technology Clinic II	Supplies and Equipment
\$200.00	COSM 1220	Esthetics Clinic I	Supplies and Equipment
\$200.00	COSM 1222	Esthetics Clinic II	Supplies and Equipment
\$200.00	COSM 1224	Esthetics Clinic III	Supplies and Equipment
\$85.00	CRJS 1207	Computer Forensics I	Software
\$110.00	CRJS 1208	Private Investigator	Firearms Supplies and Range
\$10.00	CRJS 1250	Special Topics in Criminal Justice	Handouts
\$110.00	CRJS 1601	Security Training	Firearms Supplies and Range
\$20.00	CRJS 1602	Firearms Retraining	Firearms Supplies and Range
\$55.00	CRJS 2205	Police Weapons & Defensive Tactics	Firearms Supplies and Range
\$30.00	CRJS 2210	Criminal Justice Internship	Handouts and Travel
\$85.00	CRJS 2217	Computer Forensics II	Software
\$30.00	CRJS 2225	Crime Scene Investigation	Supplies
\$35.00	CSCI 1101	Introduction to Computers	Computers and Software
\$35.00	CSCI 1102	Intro to Computers with Busi Applic	Computers and Software
\$35.00	CSCI 1103	Introduction to Programming	Computer Equipment
\$35.00	CSCI 1104	Introduction to Programming	Computer Equipment
\$35.00	CSCI 1243	Beginning Microsoft Word	Computers and Software
\$35.00	CSCI 1255	Microsoft Access Database	Computers and Software
\$45.00	CSCI 1257	SQL Server Database Design	Computer Equipment
\$45.00	CSCI 1260	Introduction to Visual Basics	Computer Equipment
\$35.00	CSCI 1261	Mastering Visual Basics Fundamentals	Computer Equipment
\$35.00	CSCI 1262	Advanced Visual Basics Development	Computer Equipment
\$35.00	CSCI 1263	Microsoft Excel Spreadsheet	Computers and Software
\$35.00	CSCI 1264	Web Applic. Develop./Microsoft Visual 6	Computers and Software
\$35.00	CSCI 1265	Enterprise Dev./Microsoft Visual B-6	Computers and Software
\$25.00	CSCI 1266	Appl. Design & Develop./Microsoft Studio 6	Computers and Software
\$35.00	CSCI 1267	Introduction to Game Programming	Computer Equipment
\$35.00	CSCI 1270	Computerized Accounting	Software
\$35.00	CSCI 1273	Visual Presentation Software	Computers and Software
\$35.00	CSCI 1275	Microsoft PowerPoint	Computers and Software
\$35.00	CSCI 1280	Advanced Database Systems	Computer Equipment
\$35.00	CSCI 1290	Special Programming Project	Computer Equipment
\$35.00	CSCI 2100	Discrete Structures	Computer Equipment
\$30.00	CSCI 2103	COBOL Programming I	Computer Equipment
\$30.00	CSCI 2104	Advanced Programming	Computer Equipment
\$30.00	CSCI 2105	COBOL Programming II	Computer Equipment
\$30.00	CSCI 2107	FORTRAN Programming	Computer Equipment
\$30.00	CSCI 2109	Assembly Language Programming	Computer Equipment
\$30.00	CSCI 2205	Basic Computer Maintenance & Support	Software and Equipment
\$30.00	CSCI 2207	Networking	Software, Supplies and Equipment
\$35.00	CSCI 2211	Basics of Electronic Commerce	Software
\$35.00	CSCI 2243	Intermediate Microsoft Word	Computers and Software
\$35.00	CSCI 2245	Advanced Microsoft Word	Computers and Software
\$385.00	CULA 1201	Professional Cooking I	Cooking Supplies and Equipment
\$385.00	CULA 1203	Professional Cooking II	Cooking Supplies and Equipment
\$50.00	CULA 1205	Food Sanitation	Certification Exam
\$385.00	CULA 1208	Professional Artisan Bread	Baking Supplies and Equipment
\$30.00	CULA 1210	Grilling and Smoking	Grilling Supplies and Equipment
\$385.00	CULA 2201	Professional Baking Techniques	Baking Supplies and Equipment
\$165.00	CULA 2203	Dining Room/Banquet Management	Supplies and Equipment
\$165.00	CULA 2204	Garde Manager	Cooking Supplies and Equipment
\$440.00	CULA 2206	Restaurant Operations	Cooking Supplies and Equipment
\$385.00	CULA 2207	Professional Pastry Principals	Baking Supplies and Equipment
\$165.00	CULA 2208	Exploring Wines	Supplies
\$385.00	CULA 2209	Professional Cooking III	Cooking Supplies and Equipment
\$385.00	CULA 2210	Restaurant Production Desserts	Baking Supplies and Equipment

COURSE FEES	COURSE #	COURSE TITLE	JUSTIFICATION
\$385.00	CULA 2211	American Regional Cuisines	Cooking Supplies and Equipment
\$60.00	DIEL 1202	Basic Diesel Fuel Systems	Supplies and Equipment
\$60.00	DIEL 1203	Heavy Equipment Alignment	Supplies and Equipment
\$60.00	DIEL 1204	Intermediate Diesels	Supplies and Equipment
\$60.00	DIEL 1205	Heavy Equipment Brakes	Supplies and Equipment
\$20.00	DIEL 1206	Advanced Diesels	Software, Supplies and Equipment
\$60.00	DIEL 1208	Diesel Accessories	Supplies and Equipment
\$30.00	DIEL 1210	Supervised Occupational Experience	Handouts and Travel
\$30.00	DIEL 2210	Supervised Occupational Experience II	Handouts and Travel
\$15.00	ECE 1204	Creative Activities for Young Children	Children's Center Supplies
\$15.00	ECE 1206	Curr./Teach Strat. for Young Children	Children's Center Supplies
\$20.00	ECE 1209	Curriculum Lab	Children's Center Supplies
\$20.00	ECE 2209	Practicum	Children's Center Supplies
\$35.00	EDUC 1101	Introduction to Education and Observation	Background Check
\$10.00	ELEC 1240	Basic Electricity for Manufacturing	Equipment
\$10.00	ELEC 1260	Elec. Qual. Sur & U.G.	Forms and Equipment
\$50.00	ELEC 1611	Electrical Retrain Qualif (Undergrd)	Equipment
\$10.00	ELEC 2230	Electronics for Electricians	Equipment
\$10.00	ELEC 2236	Fundamentals of Alternating Current	Equipment
\$50.00	EMT 1250	Emergency Medical Technican	Supplies, Equipment, Drug Screen and Liability Insurance
\$50.00	EMTP 1260	Paramedic Services I	Supplies and Equipment
\$50.00	EMTP 1262	Paramedic Services II	Supplies and Equipment
\$50.00	EMTP 1263	Paramedic Services III	Supplies and Equipment
\$50.00	EMTP 1264	Paramedic Services IV	Supplies and Equipment
\$50.00	EMTP 1272	Paramedic Clinical I	Supplies, Equipment, Drug Screen and Liability Insurance
\$50.00	EMTP 1273	Paramedic Clinical II	Supplies, Equipment, Drug Screen and Liability Insurance
\$50.00	EMTP 1274	Paramedical Clinical III	Supplies, Equipment, Drug Screen and Liability Insurance
\$70.00	ENO 1209	Cellar Operations Technology	Supplies and Equipment
\$70.00	ENO 1211	Sensory Evaluation	Supplies and Equipment
\$15.00	FLPR 1240	Fluid Power For Manufacturing	Supplies and Equipment
\$25.00	FLPR 1262	Fluid Power Fundamentals	Supplies and Equipment
\$15.00	FLPR 2255	Hydraulic Circuitry and Controls	Supplies and Equipment
\$55.00	GEOL 1101	Physical Geology	Supplies and Equipment
\$45.00	GRD 1201	Introduction to Graphic Design	Software, Supply Paper and Handouts
\$45.00	GRD 1202	Typography and Color Theory	Software, Handouts, Supplies and Equipment
\$45.00	GRD 1203	Advertising Design	Software, Handouts, Supplies and Equipment
\$55.00	GRD 1204	Digital Photography	Software, Handouts, Supplies and Equipment
\$30.00	GRD 1205	Drawing for Communication	Supply Paper and Handouts
\$45.00	GRD 1206	Production Methods I	Software, Handouts, Supplies and Equipment
\$30.00	GRD 1207	Creativity	Supplies and Handouts
\$45.00	GRD 1215	Web Page Design	Software, Handouts, Supplies and Equipment
\$45.00	GRD 2201	QUIPS I (Quark, Illustrator, Photoshop)	Software, Supply Paper and Handouts
\$55.00	GRD 2202	Advanced Digital Photography	Software, Handouts, Supplies and Equipment
\$30.00	GRD 2203	Digital Illustration	Software, Handouts, Supplies and Equipment
\$45.00	GRD 2208	Electronic Prepress	Software, Handouts, Supplies and Equipment
\$45.00	GRD 2209	Computer Type Design	Software, Handouts, Supplies and Equipment
\$45.00	GRD 2215	QUIPS II (Quark, Illustrator, Photoshop)	Software, Handouts, Supplies and Equipment
\$45.00	GRD 2218	Package Design	Software, Handouts, Supplies and Equipment
\$45.00	GRD 2220	QUIPS III (Quark, Illustrator, Photoshop)	Software, Handouts, Supplies and Equipment
\$55.00	HEA 1102	Basic First Aid	First Aid Cards, Supplies and Equipment
\$60.00	HEQT 1201	Heavy Equipment Maintenance	Supplies
\$30.00	HEQT 1204	Introduction to the Service Industry	Supplies and Equipment
\$60.00	HEQT 1205	Basic Internal Combustion	Supplies and Equipment
\$60.00	HEQT 1206	Diesel Engines I	Supplies and Equipment
\$60.00	HEQT 1207	Fundamentals of Hydraulics	Supplies and Equipment
\$60.00	HEQT 1208	Fundamentals of Machine Electronics	Supplies and Equipment
\$60.00	HEQT 1209	Heating, Ventilation and Air Conditioning	Supplies and Equipment
\$30.00	HEQT 1210	Supervised Occupational Experience	Handouts and Travel
\$60.00	HEQT 1211	Engine Fuel Systems	Supplies and Equipment

COURSE FEES	COURSE #	COURSE TITLE	JUSTIFICATION
\$60.00	HEQT 2201	Diesel Engine Performance	Supplies and Equipment
\$60.00	HEQT 2202	Machine Systems – Hydraulics	Supplies and Equipment
\$60.00	HEQT 2203	Machine Systems – Electronics	Supplies and Equipment
\$60.00	HEQT 2204	Transmissions and Torque Converters	Supplies and Equipment
\$60.00	HEQT 2205	Undercarriage and Final Drives	Supplies and Equipment
\$60.00	HEQT 2206	Machine Specific Systems	Supplies and Equipment
\$60.00	HEQT 2207	Machine Systems Diagnosis & Troubleshooting	Supplies and Equipment
\$30.00	HEQT 2210	Supervised Occupational Experience	Handouts and Travel
\$100.00	HIT 2202	Clinical Practicum I	Travel, Drug Screen and Liability Insurance
\$20.00	HIT 2206	Medical Coding	Supplies and Equipment
\$20.00	HIT 2208	Electronic Health Records	Supplies and Equipment
\$20.00	HIT 2219	Procedural Coding	Supplies and Equipment
\$15.00	HORT 1201	Introduction to Horticulture	Supplies and Greenhouse
\$30.00	HORT 1211	Landscape Plants	Supplies and Greenhouse
\$15.00	HORT 1212	Introduction to Plant Pruning	Supplies and Greenhouse
\$15.00	HORT 1213	Pest Management	Supplies and Greenhouse
\$20.00	HORT 1214	Horticulture Mechanics	Supplies and Greenhouse
\$15.00	HORT 1215	Turf Management	Supplies and Greenhouse
\$30.00	HORT 1216	Greenhouse Operations	Supplies and Greenhouse
\$10.00	HORT 1217	Fruit Production	Supplies and Greenhouse
\$10.00	HORT 1218	Vegetable Production	Supplies and Greenhouse
\$40.00	HORT 1219	Specialty Crop Production	Supplies and Greenhouse
\$30.00	HORT 2201	Landscape Design	Software
\$10.00	HORT 2202	Nursery Operations	Supplies and Greenhouse
\$20.00	HORT 2203	Golf Course Operations	Supplies and Greenhouse
\$30.00	HORT 2204	Greenhouse Management	Supplies and Greenhouse
\$15.00	INEL 1230	AC/DC Electronics	Supplies and Equipment
\$25.00	INEL 1231	AC/DC Electronics	Supplies and Equipment
\$15.00	INEL 1240	Digital Electronics	Supplies and Equipment
\$25.00	INEL 1241	Digital Electronics	Supplies and Equipment
\$25.00	INEL 1250	Electric Motors and Control Circuits	Supplies and Equipment
\$25.00	INEL 1260	Solid State Electronics	Supplies and Equipment
\$25.00	INEL 1261	Electronic Devices	Supplies and Equipment
\$30.00	INEL 1265	Solid State Devices	Supplies and Equipment
\$45.00	INEL 1290	Elec./Electronics Troubleshooting	Supplies and Equipment
\$25.00	INEL 1291	Basic Electronics for Technicians	Supplies and Equipment
\$55.00	INEL 2201	Process Control	Supplies and Equipment
\$15.00	INEL 2211	Microprocessors	Supplies and Equipment
\$15.00	INEL 2230	Industrial Electronics	Supplies and Equipment
\$15.00	INEL 2240	Electronic Circuit Analysis	Supplies and Equipment
\$15.00	INEL 2250	Electro-Optics	Supplies and Equipment
\$45.00	IST 1221	Industrial Safety	Supplies
\$45.00	IST 1230	Introduction to Robotics	Equipment
\$10.00	IST 1610	Robotics and Automation	Equipment
\$10.00	IST 1620	Electronic Devices	Supplies and Equipment
\$10.00	IST 1630	Industrial Robotics	Equipment
\$10.00	IST 1640	Robotic Applications	Equipment
\$45.00	IST 2220	Industrial Mechanics	Supplies
\$45.00	IST 2230	Introduction to PLC's	Software and Equipment
\$45.00	IST 2231	Advanced Programmable Controllers	Software and Equipment
\$45.00	IST 2232	Branded Controllers & Industrial PC's	Software and Equipment
\$45.00	IST 2258	Automated Pneumatic Machine Contr.	Supplies
\$110.00	MACH 1201	Machining Technology I	Supplies and Equipment
\$110.00	MACH 1202	Machining Technology II	Supplies and Equipment
\$110.00	MACH 1203	Machining Technology III	Supplies and Equipment
\$100.00	MEDC 1213	Coding Practicum	Travel, Drug Screen and Liability Insurance
\$220.00	MFG 1207	Safety	Instructional Module, Registraton and Exam Fees
\$220.00	MFG 1208	Manufacturing Processes & Production	Instructional Module, Registraton and Exam Fees
\$220.00	MFG 1209	Maintenance Awareness	Instructional Module, Registraton and Exam Fees

COURSE FEES	COURSE #	COURSE TITLE	JUSTIFICATION
\$220.00	MFG 1209	Maintenance Awareness	Instructional Module, Registraton and Exam Fees
\$220.00	MFG 1210	Quality Practices & Management	Instructional Module, Registraton and Exam Fees
\$75.00	MICR 1101	Basic Microbiology	Supplies and Equipment
\$55.00	MICR 1111	Microbiology	Supplies and Equipment
\$55.00	MIN 1210	Introduction to Mining	MSHA Forms, Supplies and Equipment
\$50.00	MIN 1617	Annual Retrain Metal/Non-Metal Empl	MSHA Forms, Supplies and Equipment
\$50.00	MIN 1656	Annual Retrain of Underground Coal Mine Empl	MSHA Forms, Supplies and Equipment
\$50.00	MIN 1666	Annual Retrain of Surface Area Mine Employ	MSHA Forms, Supplies and Equipment
\$70.00	MIN 1675	Surface Mine Certification	MSHA Forms, Supplies and Equipment
\$30.00	MIN 1683	Practical Mining Methods	MSHA Forms, Supplies and Equipment
\$150.00	MLT 1200	Introduction to Clinical Lab	Supplies and Equipment
\$150.00	MLT 1201	Serology	Supplies and Equipment
\$150.00	MLT 1202	Clinical Microscopy	Supplies and Equipment
\$150.00	MLT 1210	Clinical Rotation I	Supplies and Equipment
\$150.00	MLT 2203	Immunohematology	Supplies and Equipment
\$150.00	MLT 2205	Clinical Chemistry	Supplies and Equipment
\$150.00	MLT 2210	Clinical Rotation II	Supplies and Equipment
\$150.00	MLT 2228	Hematology and Hemostasis	Supplies and Equipment
\$225.00	MUSI 1120	Applied Music I (Private Voice) (1 Credit \$225 2 Credits \$450)	Instructional Fees
\$225.00	MUSI 1121	Applied Music I (Woodwinds) (1 Credit \$225 2 Credits \$450)	Instructional Fees
\$225.00	MUSI 1122	Applied Music I (Brass) (1 Credit \$225 2 Credits \$450)	Instructional Fees
\$225.00	MUSI 1123	Applied Music I (Strings) (1 Credit \$225 2 Credits \$450)	Instructional Fees
\$225.00	MUSI 1124	Applied Music I (Percussion) (1 Credit \$225 2 Credits \$450)	Instructional Fees
\$225.00	MUSI 1126	Applied Music I (Classical Guitar) (1 Credit \$225 2 Credits \$450)	Instructional Fees
\$225.00	MUSI 1127	Applied Music I (Keyboard) (1 Credit \$225 2 Credits \$450)	Instructional Fees
\$225.00	MUSI 2120	Applied Music II (Private Voice) (1 Credit \$225 2 Credits \$450)	Instructional Fees
\$225.00	MUSI 2121	Applied Music II (Woodwinds) (1 Credit \$225 2 Credits \$450)	Instructional Fees
\$225.00	MUSI 2122	Applied Music II (Brass) (1 Credit \$225 2 Credits \$450)	Instructional Fees
\$225.00	MUSI 2123	Applied Music II (Strings)(1 Credit \$225 2 Credits \$450)	Instructional Fees
\$225.00	MUSI 2124	Applied Music II (Percussion) (1 Credit \$225 2 Credits \$450)	Instructional Fees
\$225.00	MUSI 2126	Applied Music II (Classical Guitar) (1 Credit \$225 2 Credits \$450)	Instructional Fees
\$225.00	MUSI 2127	Applied Music II (Keyboard) (1 Credit \$225 2 Credits \$450)	Instructional Fees
\$100.00	NURS 1200	Intro to Basic Health Concepts	Supplies and Equipment
\$75.00	NURS 1201	Basic Health Concepts Clinical	Drug Screen and Liability Insurance
\$100.00	NURS 1202	Health-Illness Concepts	Supplies and Equipment
\$75.00	NURS 1203	Health-Illness Concepts Clinical	Drug Screen and Liability Insurance
\$50.00	NURS 1205	Family Health Concepts	Equipment
\$75.00	NURS 1206	Family Health Concepts Clinical	Drug Screen and Liability Insurance
\$100.00	NURS 1207	Holistic Health Concepts	Supplies and Equipment
\$75.00	NURS 1208	Holistic Health Concepts Clinical	Drug Screen and Liability Insurance
\$100.00	NURS 1212	Practical Nurse Role Development	Supplies and Equipment
\$125.00	NURS 1213	Intro to Health Concepts II	Supplies, Equipment and Simulation
\$20.00	NURS 1616	Nursing Skills Review	Equipment and Gloves
	NURS 1644	Basic Venipuncture	IV Arms and IV Kit
\$125.00	NURS 2212	Health Care Concepts	Supplies, Equipment and Simulation
\$75.00	NURS 2213	Health Care Concepts Clinical	Drug Screen and Liability Insurance
\$100.00	NURS 2214	Health Systems Concepts	Supplies and Equipment
\$75.00	NURS 2215	Health Systems Concepts Clinical	Drug Screen and Liability Insurance
\$125.00	NURS 2216	Complex Health Concepts	Supplies, Equipment and Simulation
\$75.00	NURS 2217	Complex Health Concepts Clinical	Drug Screen and Liability Insurance
\$35.00	OFTC 1232	Business Data Entry	Software
\$30.00	OFTC 2291	Supervised Occupational Experience	Handouts and Travel
\$55.00	ONGT 1201	Oil and Gas Production I	Supplies & Equipment
\$55.00	ONGT 1202	Artificial Lift Systems	Supplies & Equipment
\$55.00	ONGT 1203	Oil and Gas Production II	Supplies & Equipment
\$55.00	ONGT 2201	Petroleum Refining	Supplies & Equipment
\$55.00	ONGT 2202	Oil and Gas Well Mapping and Logging	Supplies & Equipment
\$55.00	ONGT 2210	Supervised Occupational Experience	Supplies & Equipment
\$200.00	OTA 1200	Intro to Occupational Therapy	Supplies and Equipment
\$200.00	OTA 1210	Clinical Observation	Supplies and Equipment

COURSE FEES	COURSE #	COURSE TITLE	JUSTIFICATION
\$200.00	OTA 1212	Activities of Daily Living	Supplies and Equipment
\$200.00	OTA 1214	Clinical Rotation II	Supplies and Equipment
\$200.00	OTA 1220	Occupational Therapeutic Media	Supplies and Equipment
\$200.00	OTA 1222	Occupational Therapy Group Process	Supplies and Equipment
\$200.00	OTA 2202	OT in Physical Disabilities	Supplies and Equipment
\$200.00	OTA 2205	OT in Pediatrics	Supplies and Equipment
\$200.00	OTA 2210	OT Theory I	Supplies and Equipment
\$200.00	OTA 2217	Fieldwork Experience I	Supplies and Equipment
\$200.00	OTA 2218	Fieldwork Experience II	Supplies and Equipment
\$200.00	OTA 2220	Psychosocial Therapy and Practice	Supplies and Equipment
\$200.00	OTA 2250	Administration	Supplies and Equipment
\$200.00	OTA 1231	Disease and Impact on Occupation	Supplies and Equipment
\$200.00	OTA 1232	Occupational Development	Supplies and Equipment
\$200.00	OTA 1233	Clinical Rotation I	Supplies and Equipment
\$200.00	OTA 2232	Aging and Impact of Occupation	Supplies and Equipment
\$10.00	PHAR 1201	Pharmacology & Medical Calculations	Supplies
\$10.00	PHAR 1202	Pharmacy Technician Practices	Supplies
\$10.00	PHAR 1203	Pharmacy Drug Distribution	Supplies
\$50.00	PHAR 1204	Pharmacy Community Clinical	Travel, Drug Screen and Liability Insurance
\$50.00	PHAR 1205	Pharmacy Hospital Clinical	Travel, Drug Screen and Liability Insurance
\$50.00	PHLE 1200	Introduction to Phlebotomy	Supplies and Equipment
\$100.00	PHLE 1201	Phlebotomy Clinical Practicum	Travel, Drug Screen and Liability Insurance
\$55.00	PHSC 1101	Physical Science	Supplies and Equipment
\$25.00	PHSC 1102	Principles of Earth Science	Supplies and Equipment
\$55.00	PHY 1101	College Physics I	Supplies and Equipment
\$55.00	PHY 1102	College Physics II	Supplies and Equipment
\$55.00	PHY 1103	University Physics I	Supplies and Equipment
\$55.00	PHY 1104	University Physics II	Supplies and Equipment
\$45.00	PYED 1105	Weight Conditioning	PT Lab Assistants, Supplies and Equipment
\$90.00	PYED 1137	Life Guard Training I	ARC Certificates, Supplies and Equipment
\$45.00	PYED 1143	Weight Conditioning II	PT Lab Assistants, Supplies and Equipment
\$45.00	PYED 1144	Weight Training	PT Lab Assistants, Supplies and Equipment
\$45.00	PYED 1160	Aerobic Super Circuit Fitness Center I	PT Lab Assistants, Supplies and Equipment
\$45.00	PYED 1165	Aerobic Super Circuit Fitness Center II	PT Lab Assistants, Supplies and Equipment
\$45.00	PYED 1170	Aerobic Super Circuit Fitness Center III	PT Lab Assistants, Supplies and Equipment
\$45.00	PYED 1175	Aerobic Super Circuit Fitness Center IV	PT Lab Assistants, Supplies and Equipment
\$45.00	PYED 1180	Aquatic Aerobic Fitness I	PT Lab Assistants, Supplies and Equipment
\$45.00	PYED 1185	Aquatic Aerobic Fitness II	PT Lab Assistants, Supplies and Equipment
\$45.00	PYED 1190	Aquatic Aerobic Fitness III	PT Lab Assistants, Supplies and Equipment
\$45.00	PYED 1195	Aquatic Aerobic Fitness IV	PT Lab Assistants, Supplies and Equipment
\$100.00	RAD 1202	Radiographic Procedures	Filmbadge, Supplies and Equipment
\$100.00	RAD 1205	Radiographic Equipment & Imaging I	Filmbadge, Supplies and Equipment
\$150.00	RAD 1207	Radiology Clinical I	Filmbadge, Travel, Drug Screen and Liability Insurance
\$150.00	RAD 1208	Radiology Clinical II	Filmbadge, Travel, Drug Screen and Liability Insurance
\$100.00	RAD 1209	Radiographic Equipment & Imaging II	Filmbadge, Supplies and Equipment
\$150.00	RAD 1211	Radiology Clinical III	Filmbadge, Travel, Drug Screen and Liability Insurance
\$100.00	RAD 1212	Radiographic Equipment and Imaging III	Filmbadge, Supplies and Equipment
\$150.00	RAD 1214	Radiology Clinical IV	Filmbadge, Travel, Drug Screen and Liability Insurance
\$75.00	RAD 1221	Computed Tomography Clinicals	Filmbadge, Travel, Drug Screen and Liability Insurance
\$50.00	RAD 1235	MRI Clinicals	Filmbadge, Travel, Drug Screen and Liability Insurance
\$20.00	STP 1216	Principles of Surgical Technology	Supplies and Equipment
\$20.00	STP 1217	Surgical Procedures I	Supplies and Equipment
\$20.00	STP 1218	Surgical Procedures II	Supplies and Equipment
\$20.00	STP 1219	Clinical in Surgical Technology I	Supplies and Equipment
\$20.00	STP 1220	Clinical in Surgical Technology II	Supplies and Equipment
\$30.00	SURV 1205	Introduction to Mapping and G.I.S.	Computers, Plotters, Handouts, Software and Supplies
\$25.00	SURV 1601	Foundations & Applications of G.I.S.	Computers, Plotters, Handouts, Software and Supplies
\$35.00	SURV 2201	Engineering Surveying	Computers, Plotters, Handouts, Software and Supplies
\$35.00	SURV 2210	GIS/GPS Concepts and Applications	Computers, Plotters, Handouts, Software and Supplies

COURSE FEES	COURSE #	COURSE TITLE	JUSTIFICATION
\$100.00	TRUK 1201	Commercial Driver's License Review	Physical and Drug Screen
\$2,000.00	TRUK 1202	Truck Driving I	Truck Usage and Repairs
\$2,000.00	TRUK 1203	Truck Driving II	Truck Usage and Repairs
\$75.00	UAS 1200	Intro to Unmanned Aircraft Systems	Software, Supplies and Equipment
\$75.00	UAS 1201	Advanced Unmanned Aircraft Systems	Software, Supplies and Equipment
\$50.00	UAS 1202	Unmanned Aircraft Law & Test Prep	Software, Supplies and Equipment
\$200.00	VET 1210	Small Animal Nursing I	Supplies and Equipment
\$200.00	VET 1211	Small Animal Nursing II	Supplies and Equipment
\$200.00	VET 1212	Animal Anatomy & Physiology I	Supplies and Equipment
\$200.00	VET 1213	Animal Anatomy & Physiology II	Supplies and Equipment
\$200.00	VET 1216	Large Animal Nursing	Supplies and Equipment
\$200.00	VET 1217	Animal Radiography	Supplies and Equipment
\$200.00	VET 1218	Veterinary Practice Management	Supplies and Equipment
\$200.00	VET 1219	Animal Clinical Lab I	Supplies and Equipment
\$200.00	VET 1233	Animal Surgical Technology I	Supplies and Equipment
\$200.00	VET 1238	Animal Pharmacology I	Supplies and Equipment
\$200.00	VET 2219	Animal Clinical Lab II	Supplies and Equipment
\$200.00	VET 2231	Animal Clinical Rotation I	Supplies and Equipment
\$200.00	VET 2232	Animal Clinical Rotation II	Supplies and Equipment
\$200.00	VET 2233	Animal Surgical Technology II	Supplies and Equipment
\$200.00	VET 2235	Laboratory Animals	Supplies and Equipment
\$200.00	VET 2236	Animal Management	Supplies and Equipment
\$200.00	VET 2238	Animal Pharmacology II	Supplies and Equipment
\$200.00	VET 2239	Animal Diseases	Supplies and Equipment
\$25.00	WBM 1220	Introduction to HTML	Software
\$110.00	WCT 1250	Land Based Communications	Software and Equipment
\$110.00	WCT 2200	Voice Over IP	Software and Equipment
\$30.00	WCT 2210	Supervised Occupational Experience	Handouts and Travel
\$110.00	WCT 2250	Cellular Technology	Software and Equipment
\$110.00	WCT 2260	Wireless LAN/WAN	Software and Equipment
\$150.00	WELD 1270	Introduction to Welding Process	Supplies and Equipment
\$150.00	WELD 1272	Structural Shielded Metal Arc Weld	Supplies and Equipment
\$150.00	WELD 1282	GMAW/GTAW Welding	Supplies and Equipment
\$150.00	WELD 1283	GMAW/GTAW Welding	Supplies and Equipment
\$120.00	WELD 1284	Basic GTAW Welding	Supplies and Equipment
\$110.00	WELD 1601	Welding	Supplies and Equipment
\$110.00	WELD 1602	Advanced Welding	Supplies and Equipment
\$35.00	WELD 1605	Welding Refresher	Supplies and Equipment
\$110.00	WELD 1610	Welding Applications	Supplies
\$15.00	WELD 2240	Metallurgy & Heat Treatment	Supplies
\$15.00	WELD 2242	Weld Inspection for Quality Control	Supplies and Equipment
\$150.00	WELD 2262	Pipe Welding I	Supplies and Equipment
\$130.00	WELD 2274	Blueprint Reading for Welders	Supplies and Equipment
\$150.00	WELD 2275	Advanced Shielded Metal Arc Welding	Supplies and Equipment
\$150.00	WELD 2285	Pipe Welding II	Supplies and Equipment
\$55.00	ZOO 1101	General Zoology	Supplies and Equipment
\$55.00	ZOO 1105	Anatomy and Physiology I	Supplies and Equipment
\$55.00	ZOO 1106	Anatomy and Physiology II	Supplies and Equipment
\$45 - \$135	CSCI	All CSCI 1600 courses are to be: .50 Credit \$45 1 Credit \$90 1.5 Credit \$135):	
	CSCI 1600	Selected Computer Topics	Computers, Software and Handouts
	CSCI 1608	Beg. Computers/Win	Computers, Software and Handouts
	CSCI 1609	Int. Computers/Win	Computers, Software and Handouts
	CSCI 1612	Beginning Microsoft Word	Computers, Software and Handouts
	CSCI 1614	Advanced Microsoft Word	Computers, Software and Handouts
	CSCI 1615	Microsoft Word Macros	Computers, Software and Handouts
	CSCI 1616	Beginning Microsoft Excel	Computers, Software and Handouts
	CSCI 1617	Intermediate Microsoft Excel	Computers, Software and Handouts

COURSE FEES	COURSE #	COURSE TITLE	JUSTIFICATION
	CSCI 1618	Advanced Microsoft Excel	Computers, Software and Handouts
	CSCI 1619	Microsoft Excel Macros	Computers, Software and Handouts
	CSCI 1620	Beginning Microsoft PowerPoint	Computers, Software and Handouts
	CSCI 1621	Intermediate Microsoft PowerPoint	Computers, Software and Handouts
	CSCI 1623	Intro to Computer Keyboarding	Computers, Software and Handouts
	CSCI 1624	Computer Basics: Getting Started	Computers, Software and Handouts
	CSCI 1625	Beginning Microsoft Access	Computers, Software and Handouts
	CSCI 1626	Intermediate Microsoft Access	Computers, Software and Handouts
	CSCI 1627	Advanced Microsoft Access	Computers, Software and Handouts
	CSCI 1630	Beginning Microsoft Outlook	Computers, Software and Handouts
	CSCI 1631	Intermediate Microsoft Access	Computers, Software and Handouts
	CSCI 1632	Teaching Online with Blackboard	Computers, Software and Handouts
	CSCI 1634	Computer Basics: Internet & Email	Computers, Software and Handouts
	CSCI 1666	Beginning Web Page Design	Computers, Software and Handouts
	CSCI 1667	Intermediate Web Page Design	Computers, Software and Handouts
	CSCI 1693	Beginning Internet	Computers, Software and Handouts
	CSCI 1694	Beginning QuickBooks	Computers, Software and Handouts
	CSCI 1695	Beginning Photoshop	Computers, Software and Handouts

Source: Policy & Procedure Manual: 6.7 Fees, Section 6 (j) "Lab Fees" 2.2017

Miscellaneous fees and options

**Listed below are common fees and not intended to be an all-inclusive list.

Special Program Fees:

Students in select programs will have additional expenses depending on the program in which they are enrolled. These expenses include text and workbooks, and pertinent supply fees.

Textbooks

The RLC Bookstore and Retail Store is located on the ground floor of the Academic Building. Many books are available via a rental option, although some books for specific classes must be purchased, and cannot be rented.

Textbook rental fees will be assessed to the student on a per book basis. In all cases, the rental of textbooks will require a pre-established deposit charged to the student at the time of rental. The current fee of \$60 per book includes a \$20 deposit fee which will be refunded upon proper return of the rented text. If a student chooses to purchase his or her textbooks, all sales will be final. Purchased texts will not be accepted for return and no reimbursement will be made after two weeks following the beginning date of classes for fall and spring semesters or one week after the beginning date of summer classes. Students will be required to be registered for classes prior to the rental of textbooks and must bring a course schedule and student ID with them at the time of text rental or purchase.

Textbook Return Policy

The period in which students may return rented textbooks will begin on the first day of final exams week and will end at the close of business on the third working day following the final day of exams. After the return deadline period ends, rented textbooks are no longer returnable.

A student who does not return his/her textbooks by the deadline will be charged the retail price for the text plus a \$25 handling fee less deposit; this charge will be placed on the student's account with the college. Textbooks which are lost or stolen will be the responsibility of the student, and the student will be assessed the retail price for the text plus \$25 handling fee (less deposit) on his/her student account. Textbook deposit fees will be processed by the textbook department and returned to the student in the form of cash.

Rented textbooks which are returned will be inspected by the Bookstore staff to determine a reasonable condition for return. Torn covers, torn pages, water damage, etc. may mean returned textbooks will not be accepted and deposit fees will not be returned to the student. Reasonable highlighting will be allowed in rented textbooks. However, writing in rented texts will not be allowed. Final determination of the condition of returned textbooks will be made by the VP for Finance and Administration.

Online and Hybrid Fee

A fee of \$20 per credit hour will be charged to students enrolled in an online or hybrid section of a course.

Transcript Fee

Student official transcripts are \$5 per transcript. All requests are processed online at www.rlc.edu/myrlc. The student account must be current with no outstanding balances for the transcript request to be processed.

Payment Plan

The college offers a convenient budget plan that provides a low cost option for budgeting tuition and fees. There is a \$25 per semester nonrefundable enrollment fee. More information can be obtained by contacting the RLC Business Office.

Non-Payment Fee

If dropped for non-payment, a \$15 nonrefundable service charge and a hold will be placed in the student's account. Before a student is allowed to re-enroll, the outstanding balance on his/her account must be paid current.

Parking and/or Speeding fines

Vehicles must be parked inside the lines of the parking space. Parking tickets are \$25. Speeding tickets are \$25 up to 5 mph over posted speed limit, with \$25 additional fee if speed is over 5 mph beyond posted speed limit.

Unauthorized parking in restricted spaces will result in a parking ticket. The fine for unauthorized parking in a handicapped space is \$250.

Speeding tickets issued within 500 ft. of posted speed limits near the Rend Lake College Foundation Children's Center will be double the ticket fees.

Fines and Financial Obligations

Students who have past due financial obligations to Rend Lake College, including but not limited to library fines or charges, will not be permitted to register for classes or receive a transcript until satisfactory arrangements have been made to meet those obligations.

Rend Lake College
Institutional Data
Section II: Students

Section II – Students

Headcount by Enrollment Status

	Summer 12	Fall 12	Spring 13	Summer 13	Fall 13	Spring 14	Summer 14	Fall 14	Spring 15
Full Time	625	1701	1574	558	1540	1472	462	1464	1342
Part Time	2782	5403	6160	2620	6142	6771	3302	6133	6982

Total FY	3407	7104	7734	3178	7682	8243	3764	7597	8324
Total FY	18245			19103			19685		

	Summer 15	Fall 15	Spring 16	Summer 16	Fall 16	Spring 17
Full Time	407	1254	1197	415	1249	1238
Part Time	2806	4956	3192	1033	2336	2474

Total	3213	6210	4389	1448	3585	3712
Total FY	13812			8745		

*Source: ICCB A1 Report: Total FY Headcount are duplicated

Headcount by Enrollment Status (as percentage of total enrollment)

	FY2013			FY2014			FY2015											
	Summer 12	Fall 12	Spring 13	Summer 13	Fall 13	Spring 14	Summer 14	Fall 14	Spring 15									
Full-Time	625	18.34%	1701	23.94%	1574	20.35%	558	17.56%	1540	20.05%	1472	17.86%	462	12.27%	1464	19.27%	1342	16.12%
Part-Time	2782	81.66%	5403	76.06%	6160	79.65%	2620	82.44%	6142	79.95%	6771	82.14%	3302	87.73%	6133	80.73%	6982	83.88%
Total	3407	100.00%	7104	100.00%	7734	100.00%	3178	100.00%	7682	100.00%	8243	100.00%	3764	100%	7597	100.00%	8324	100.00%

	FY2016			FY2017								
	Summer 15	Fall 15	Spring 16	Summer 16	Fall 16	Spring 17						
Full-Time	407	12.67%	1254	20.19%	1197	27.27%	415	28.66%	1249	34.84%	1238	33.35%
Part-Time	2806	87.33%	4956	79.81%	3192	72.73%	1033	71.34%	2336	65.16%	2474	66.65%
Total	3213	100%	6210	100.00%	4389	100.00%	1448	100%	3585	100.00%	3712	100.00%

Source: ICCB A1

Headcount numbers by term are unduplicated, but total FY are duplicated as students could be enrolled for more than one semester during same FY.

Headcount attempted vs. Earned

FY13	# of Students Enrolled	# of Students that earned hours	% of students that earned hours	# of Students that didn't earn hours	% of Students that didn't earn hours
Summer 12	3406	3201	93.98%	205	6.02%
Fall 12	7104	6779	95.43%	325	4.57%
Spring 13	7735	7318	94.61%	417	5.39%

FY14	# of Students Enrolled	# of Students that earned hours	% of students that earned hours	# of Students that didn't earn hours	% of Students that didn't earn hours
Summer 13	3178	2880	90.62%	298	9.38%
Fall 13	7682	7303	95.07%	379	4.93%
Spring 14	8243	7788	94.48%	455	5.52%

FY15	# of Students Enrolled	# of Students that earned hours	% of students that earned hours	# of Students that didn't earn hours	% of Students that didn't earn hours
Summer 14	3764	3511	93.28%	253	6.72%
Fall 14	7597	7180	94.51%	417	5.49%
Spring 15	8324	7913	95.06%	411	4.94%

FY16	# of Students Enrolled	# of Students that earned hours	% of students that earned hours	# of Students that didn't earn hours	% of Students that didn't earn hours
Summer 15	3213	3106	96.67%	107	3.33%
Fall 15	6210	5935	95.57%	275	4.43%
Spring 16	4389	4191	95.49%	198	4.51%

FY17	# of Students Enrolled	# of Students that earned hours	% of students that earned hours	# of Students that didn't earn hours	% of Students that didn't earn hours
Summer 15	1448	1320	91.16%	128	8.84%
Fall 15	3585	3337	93.08%	248	6.92%
Spring 16	3712	3492	94.07%	220	5.93%

Credit Hours

Credit Hours by Enrollment Status (Full-Time/Part-Time, duplicated)

Enrollment Status	FY2013			FY2014			FY2015		
	Summer 12	Fall 12	Spring 13	Summer 13	Fall 13	Spring 14	Summer 14	Fall 14	Spring 15
Full-Time	5161	25927	24062	4542	12128	13740	4072	22417	20865
Part-Time	3895	12306	12700	3668	23633	23069	3648	11327	12987
Total by Term	9056	38233	36762	8210	35761	36809	7720	33744	33852
Total by Fiscal Year	84051			80780			75316		

Enrollment Status	FY2016			FY2017		
	Summer 15	Fall 15	Spring 16	Summer 16	Fall 16	Spring 17
Full-Time	3082	19333	18584	3177	19500	19198
Part-Time	3358	10766	10488	2309	9200	8815
Total by Term	6440	30099	29072	5485	28700	28012
Total by Fiscal Year	65611			62197		

Source: ICCB A1 Enrollment Report

Total Credit Hours by Term

	FY2013			FY2014			FY2015		
	Summer 12	Fall 13	Spring 13	Summer 13	Fall 13	Spring 14	Summer 14	Fall 14	Spring 15
Hours by Term	9038	38197	40298	8242	35773	36804	7571	33776	33784

	FY2016			FY2017		
	Summer 15	Fall 15	Spring 16	Summer 16	Fall 16	Spring 17
Hours by Term	6447	30102	29072	5485	28700	28012

Total Credit Hours by Fiscal Year

	FY2013	FY2014	FY2015	FY2016	FY2017
Total by Fiscal Year	87532	80819	75131	63621	62197

Source: ICCB SUSR Report – Total Hours

FTE by Fiscal Year

	FY2013	FY2014	FY2015	FY2016	FY2017
FTE	2918	2694	2504	2121	2073

**There may be differences in hours between the SUSR and the A1 reports due to changes/corrections being made to accounts in the system, timing issues, and to improvements made in our reporting efficiencies.

Total Reimbursable Credit Hours (by term)

	FY2013			FY2014			FY2015		
	Summer	Fall	Spring	Summer	Fall	Spring	Summer	Fall	Spring
	12	13	13	13	13	14	14	14	15
Hours by Term	8141	34801	37367	7496	32851	33882	6860	30933	31003

	FY2016			FY2017		
	Summer	Fall	Spring	Summer	Fall	Spring
	15	15	16	16	16	17
Hours by Term	5761	27821	27380	4954	26579	26373

Total Credit Hours by Fiscal Year (reimbursable)

	FY2013	FY2014	FY2015	FY2016	FY2017
Total by Fiscal Year	80308	74229	68796	60962	57906

Source: ICCB SUSR Report – Total Hours

Credit Hours Attempted vs Credit Hours Earned

FY13	Credit Hours Attempted	Credit Hours Earned	% of hours earned	# of hours not completed	% of hours not completed
Summer 12	9056	7711	85.15%	1345	14.85%
Fall 12	37527	31091	82.85%	6436	17.15%
Spring 13	36762	30738	83.61%	6024	16.39%
FY14	Credit Hours Attempted	Credit Hours Earned	% of hours earned	# of hours not completed	% of hours not completed
Summer 13	8210	6342	77.25%	1868	22.75%
Fall 13	35761	30005	83.90%	5756	16.10%
Spring 14	36809	30840	83.78%	5969	16.22%
FY15	Credit Hours Attempted	Credit Hours Earned	% of hours earned	# of hours not completed	% of hours not completed
Summer 14	7720	6656	86.22%	1064	13.78%
Fall 14	33744	28373	84.08%	5371	15.92%
Spring 15	33852	28300	83.60%	5552	16.40%
FY16	Credit Hours Attempted	Credit Hours Earned	% of hours earned	# of hours not completed	% of hours not completed
Summer 15	6440	5681	88.21%	759	11.79%
Fall 15	30099	25961	86.25%	4138	13.75%
Spring 16	29072	25440	87.51%	3632	12.49%
FY17	Credit Hours Attempted	Credit Hours Earned	% of hours earned	# of hours not completed	% of hours not completed
Summer 16	5485	4775	87.06%	710	12.94%
Fall 16	28700	24609	85.75%	4091	14.25%
Spring 17	28012	24118	86.10%	3894	13.90%

Source: ICCB A1 Annual Enrollment Report

**Difference in total hours attempted do not match early years to total hours. This is due to improvements made to our reports since those years.

Dual Credit by FY and High School

FY2013				FY2014			
HIGH SCHOOL	STUDENTS ENROLLED (Duplicated)	TOTAL CREDIT HOURS	SAVINGS TO STUDENTS (\$95*credit hours)	HIGH SCHOOL	STUDENTS ENROLLED (Duplicated)	TOTAL CREDIT HOURS	SAVINGS TO STUDENTS (\$95*credit hours)
Benton	423	1453	\$ 135,129.00	Benton	601	1821	\$ 172,995.00
Christopher	93	431	\$ 40,083.00	Christopher	119	481	\$ 45,695.00
Hamilton County	181	553	\$ 51,429.00	Hamilton County	164	512	\$ 48,640.00
Mt. Vernon	1170	3221	\$ 299,553.00	Mt. Vernon	981	3077	\$ 292,315.00
Pinckneyville	199	697	\$ 64,821.00	Pinckneyville	191	667	\$ 63,365.00
Sesser	198	598	\$ 55,614.00	Sesser	40	120	\$ 11,400.00
Thompsonville	60	206	\$ 19,158.00	Thompsonville	55	183	\$ 17,385.00
Waltonville	110	286	\$ 26,598.00	Webber	56	184	\$ 17,480.00
Wayne City	142	381	\$ 35,433.00	Wayne City	111	299	\$ 28,405.00
Webber	35	115	\$ 10,695.00	Woodlawn	122	390	\$ 37,050.00
Woodlawn	113	375	\$ 34,875.00	Waltonville	78	196	\$ 18,620.00
Zeigler	102	317	\$ 29,481.00	Zeigler	135	408	\$ 38,760.00
TOTAL	2826	8633	\$ 802,869.00	TOTAL	2653	8338	\$ 792,110.00
FY2015				FY2016			
HIGH SCHOOL	STUDENTS ENROLLED (Duplicated)	TOTAL CREDIT HOURS	SAVINGS TO STUDENTS (\$95*credit hours)	HIGH SCHOOL	STUDENTS ENROLLED (Duplicated)	TOTAL CREDIT HOURS	SAVINGS TO STUDENTS (\$95*credit hours)
Benton	526	1677	159315	Benton	647	1986	188670
Christopher	88	370	35150	Christopher	111	411	39045
Hamilton County	155	482	45790	Hamilton County	270	777	73815
Mt. Vernon	888	2415	229425	Mt. Vernon	659	1951	185345
Pinckneyville	376	1304	123880	Pinckneyville	350	1112	105640
Sesser	50	98	9310	Sesser	60	152	14440
Thompsonville	66	204	19380	Thompsonville	76	248	23560
Waltonville	135	380	36100	Waltonville	139	370	35150
Wayne City	133	370	35150	Wayne City	229	654	62130
Webber	235	639	60705	Webber	243	748	71060
Woodlawn	113	366	34770	Woodlawn	114	368	34960
Zeigler	80	251	23845	Zeigler	116	383	36385
TOTAL	2845	8556	\$ 812,820.00	TOTAL	3014	9160	\$ 870,200.00

Dual Credit by High School and Term

FY2017							
HIGH SCHOOL	Fall Headcount	Spring Headcount	Total Headcount	Fall credit hours	Spring credit hours	TOTAL CREDIT HOURS	SAVINGS TO STUDENTS (\$110*credit hours)
Benton	218	230	448	647	786	1433	\$ 157,630.00
Christopher	51	55	106	153	215	368	\$ 40,480.00
Hamilton County	272	286	558	786	865	1651	\$ 181,610.00
Mt. Vernon	358	440	798	847	1284	2131	\$ 234,410.00
Pinckneyville	205	164	369	637	564	1201	\$ 132,110.00
Sesser	18	40	58	42	96	138	\$ 15,180.00
Thompsonville	67	67	134	190	210	400	\$ 44,000.00
Waltonville	50	80	130	151	201	352	\$ 38,720.00
Wayne City	126	117	243	373	342	715	\$ 78,650.00
Webber	112	130	242	350	406	756	\$ 83,160.00
Woodlawn	64	61	125	217	206	423	\$ 46,530.00
Zeigler	58	108	166	174	357	531	\$ 58,410.00
TOTAL	1599	1778	3377	4567	5532	10099	\$ 1,110,890.00

Dual Credit Textbook Savings Report

DUAL CREDIT REPORT
FY 2013

Textbook Savings						
HIGH SCHOOL	FALL 2012			SPRING 2013		
	TEXTS	CHARGES	VALUE	TEXTS	CHARGES	VALUE
BENTON	234	\$ 24,913.31	\$ 4,268.00	92	\$ 12,112.58	\$ 920.00
CHRISTOPHER	71	\$ 10,582.30	\$ 710.00	0	\$ -	\$ 3,642.81
HAMILTON CO.	80	\$ 7,234.60	\$ 800.00	116	\$ 10,093.62	\$ 2,330.00
MT.VERNON	339	\$ 33,970.85	\$ 3,390.00	233	\$ 20,500.67	\$ 715.00
PINCKNEYVILLE	181	\$ 13,359.40	\$ 2,502.25	66	\$ 7,203.90	\$ 850.00
SESSER-VALIER	141	\$ 16,900.79	\$ 1,410.00	85	\$ 9,223.95	\$ 240.00
THOMPSONVILLE	51	\$ 4,536.51	\$ 501.50	24	\$ 746.40	\$ 460.00
WALTONVILLE	46	\$ 4,616.76	\$ 460.00	46	\$ 5,476.17	\$ 690.00
WAYNE CITY	93	\$ 8,757.61	\$ 930.00	69	\$ 6,171.88	\$ 80.00
WEBBER	30	\$ 2,752.49	\$ 640.00	8	\$ 913.60	\$ 580.00
WOODLAWN	64	\$ 4,907.00	\$ 640.00	58	\$ 5,538.37	\$ 430.00
ZEIGLER	63	\$ 6,195.15	\$ 626.50	43	\$ 4,034.51	
TOTALS	1393	\$ 138,726.77	\$ 16,878.25	840	\$ 82,015.65	\$ 10,937.81

FY 2013 TOTALS	
TOTAL TEXTS	\$2,233.00
TOTAL CHARGES	\$220,742.42
TOTAL VALUE	\$27,816.06
TOTAL RENTAL VALUE	\$89,320.00
TOTAL SAVINGS	\$192,926.36

* TOTAL SAVINGS = TOTAL CHARGES LESS THE TOTAL VALUE

FY 2014

Textbook Savings						
HIGH SCHOOL	FALL 2013			SPRING 2014		
	TEXTS	CHARGES	VALUE	TEXTS	CHARGES	VALUE
BENTON	290	\$ 29,658.42	\$ 4,273.40	142	\$ 17,392.40	\$ 1,420.00
CHRISTOPHER	72	\$ 7,617.84	\$ 720.00	35	\$ 6,218.94	\$ 350.00
HAMILTON CO.	120	\$ 8,334.05	\$ 1,200.00	89	\$ 8,559.21	\$ 890.00
MT.VERNON	369	\$ 36,968.85	\$ 3,690.00	344	\$ 26,273.32	\$ 3,440.00
PINCKNEYVILLE	292	\$ 13,071.90	\$ 3,360.00	112	\$ 9,755.60	\$ 1,055.00
SESSER-VALIER	33	\$ 3,471.05	\$ 330.00	24	\$ 2,464.90	\$ 240.00
THOMPSONVILLE	56	\$ 4,976.97	\$ 987.50	27	\$ 1,932.30	\$ 270.00
WALTONVILLE	42	\$ 3,926.76	\$ 420.00	38	\$ 3,873.45	\$ 380.00
WAYNE CITY	112	\$ 10,087.22	\$ 1,293.60	89	\$ 6,999.64	\$ 890.00
WEBBER	64	\$ 4,920.55	\$ 640.00	10	\$ 1,142.00	\$ 100.00
WOODLAWN	90	\$ 7,179.05	\$ 900.00	61	\$ 6,246.00	\$ 610.00
ZEIGLER	106	\$ 8,376.96	\$ 1,058.50	81	\$ 5,644.05	\$ 810.00
TOTALS	1646	\$ 138,589.62	\$ 18,873.00	1052	\$ 96,501.81	\$ 10,455.00

FY 2014 TOTALS	
TOTAL TEXTS	\$2,698.00
TOTAL CHARGES	\$235,091.43
TOTAL VALUE	\$29,328.00
TOTAL RENTAL VALUE	\$107,920.00
TOTAL SAVINGS	\$205,763.43

* TOTAL SAVINGS = TOTAL CHARGES LESS THE TOTAL VALUE

**DUAL CREDIT REPORT
FY 2015**

Textbook Savings						
HIGH SCHOOL	FALL 2014			SPRING 2015		
	TEXTS	CHARGES	VALUE	TEXTS	CHARGES	VALUE
BENTON	229	\$ 3,331.00	\$ 22,506.97	217	\$ 2,170.00	\$ 19,839.41
CHRISTOPHER	45	\$ 450.00	\$ 3,799.72	18	\$ 180.00	\$ 3,586.52
HAMILTON CO.	111	\$ 1,110.00	\$ 8,873.52	56	\$ 560.00	\$ 4,308.92
MT.VERNON	278	\$ 2,780.00	\$ 34,914.40	318	\$ 3,180.00	\$ 21,428.96
PINCKNEYVILLE	227	\$ 2,270.00	\$ 30,851.17	229	\$ 2,290.00	\$ 18,593.79
SESSER-VALIER	24	\$ 240.00	\$ 2,928.79	13	\$ 130.00	\$ 1,512.01
THOMPSONVILLE	72	\$ 720.00	\$ 5,237.70	36	\$ 270.00	\$ 1,797.83
WALTONVILLE	72	\$ 720.00	\$ 8,134.75	93	\$ 930.00	\$ 7,569.92
WAYNE CITY	137	\$ 2,587.20	\$ 11,318.62	91	\$ 910.00	\$ 6,148.40
WEBBER	186	\$ 1,860.00	\$ 12,918.52	132	\$ 1,320.00	\$ 10,066.54
WOODLAWN	91	\$ 910.00	\$ 7,640.23	115	\$ 1,150.00	\$ 12,680.60
ZEIGLER	73	\$ 730.00	\$ 5,976.96	67	\$ 670.00	\$ 3,857.58
TOTALS	1545	\$ 17,708.20	\$ 155,101.35	1385	\$ 13,760.00	\$ 111,390.48

FY 2016 TOTALS	
TOTAL TEXTS	2930
TOTAL CHARGES	\$31,468.20
TOTAL VALUE	\$266,491.83
TOTAL RENTAL VALUE	\$117,200.00
TOTAL SAVINGS	(\$235,023.63)

* TOTAL SAVINGS = TOTAL CHARGES LESS THE TOTAL VALUE

**DUAL CREDIT REPORT
FY 2016**

Textbook Savings						
HIGH SCHOOL	FALL 2015			SPRING 2016		
	TEXTS	CHARGES	VALUE	TEXTS	CHARGES	VALUE
BENTON	353	\$ 4,153.52	\$ 45,079.26	317	\$ 3,170.00	\$ 46,369.97
CHRISTOPHER	120	\$ 1,200.00	\$ 11,231.37	89	\$ 890.00	\$ 10,716.52
HAMILTON CO.	92	\$ 920.00	\$ 8,205.62	227	\$ 2,270.00	\$ 22,226.07
MT.VERNON	354	\$ 3,540.00	\$ 49,346.20	379	\$ 3,790.00	\$ 41,622.75
PINCKNEYVILLE	225	\$ 2,250.00	\$ 31,384.58	183	\$ 1,830.00	\$ 17,713.48
SESSER-VALIER	21	\$ 210.00	\$ 2,409.75	19	\$ 190.00	\$ 2,180.25
THOMPSONVILLE	58	\$ 580.00	\$ 5,530.66	54	\$ 540.00	\$ 5,240.50
WALTONVILLE	63	\$ 630.00	\$ 7,948.51	87	\$ 870.00	\$ 8,733.92
WAYNE CITY	164	\$ 2,672.40	\$ 16,659.90	161	\$ 1,640.00	\$ 16,494.52
WEBBER	185	\$ 1,880.00	\$ 18,768.01	204	\$ 2,070.00	\$ 18,375.00
WOODLAWN	79	\$ 790.00	\$ 9,623.83	56	\$ 560.00	\$ 8,683.59
ZEIGLER	69	\$ 690.00	\$ 6,120.74	53	\$ 530.00	\$ 4,462.10
TOTALS	1783	\$ 19,515.92	\$ 212,308.43	1829	\$ 18,350.00	\$ 202,818.67

FY 2016 TOTALS	
TOTAL TEXTS	3612
TOTAL CHARGES	\$37,865.92
TOTAL VALUE	\$415,127.10
TOTAL RENTAL VALUE	\$144,480.00
TOTAL SAVINGS	(\$377,261.18)

* TOTAL SAVINGS = TOTAL CHARGES LESS THE TOTAL VALUE

DUAL CREDIT REPORT
FY 2017

Textbook Savings						
HIGH SCHOOL	FALL 2016			SPRING 2017		
	TEXTS	CHARGES	VALUE	TEXTS	CHARGES	VALUE
BENTON	211	\$ 3,560.00	\$ 30,868.67	132	\$ 1,320.00	\$ 23,507.73
CHRISTOPHER	112	\$ 1,120.00	\$ 14,524.99	84	\$ 840.00	\$ 12,296.09
HAMILTON CO.	286	\$ 3,382.00	\$ 39,243.54	339	\$ 4,028.00	\$ 42,646.08
MT. VERNON	329	\$ 3,290.00	\$ 56,860.64	381	\$ 3,810.00	\$ 62,928.85
PINCKNEYVILLE	243	\$ 2,430.00	\$ 34,622.67	243	\$ 2,430.00	\$ 34,786.09
SESSER-VALIER	23	\$ 230.00	\$ 2,639.25	19	\$ 190.00	\$ 2,180.25
THOMPSONVILLE	110	\$ 1,100.00	\$ 11,258.99	86	\$ 860.00	\$ 6,725.34
WALTONVILLE	140	\$ 1,400.00	\$ 15,654.77	171	\$ 1,710.00	\$ 19,414.60
WAYNE CITY	138	\$ 1,380.00	\$ 21,468.94	163	\$ 1,630.00	\$ 23,213.61
WEBBER	60	\$ 600.00	\$ 8,493.85	84	\$ 840.00	\$ 8,930.59
WOODLAWN	51	\$ 510.00	\$ 6,405.45	96	\$ 960.00	\$ 9,593.61
ZEIGLER	81	\$ 810.00	\$ 10,199.90	98	\$ 980.00	\$ 10,501.52
TOTALS	1784	\$ 19,812.00	\$ 252,241.66	1896	\$ 19,598.00	\$ 256,724.36

FY 2017 TOTALS

TOTAL TEXTS	3680
TOTAL CHARGES	\$39,410.00
TOTAL VALUE	\$508,966.02
TOTAL RENTAL VALUE	\$147,200.00
TOTAL SAVINGS	(\$469,556.02)

* TOTAL SAVINGS = TOTAL CHARGES LESS THE TOTAL VALUE

Source: Casey Rhine, RLC Bookstore

Dual Enrollment

	# of Students	Credit Hours
FY2014		
Summer 2013	644	1750
Fall 2013	382	6855
Spring 2014	399	677
Total	1425	9282
FY2015		
Summer 2014	369	603
Fall 2014	497	514
Spring 2015	862	890
Total	1728	2006
FY2016		
Summer 2015	332	670
Fall 2015	268	504
Spring 2016	221	670
Total	821	1844
FY2017		
Summer 2016	390	793
Fall 2016	209	402
Spring 2017	169	511
Total	768	1706
Source: ICCB SUSR Report # of Students are duplicated		

Source: RLC Custom Reports, Dual Enrollment Student List

Online Course Offerings/Enrollment

Online Class Offerings			
Year	# of Courses Offered	# of Students Enrolled	Credit Hours Generated
FY2014	136	2247	6055
FY2015	176	2255	6284
FY2016	132	1936	5202
FY2017	133	2096	5758

Hybrid Course Offerings/Enrollment

Hybrid Class Offerings			
Year	# of Courses Offered	# of Students Enrolled	Credit Hours Generated
FY2014	92	1524	2491
FY2015*	320	6039	8691
FY2016	83	857	3375
FY2017	97	1124	3903
*FY2015 - EMT classes were listed as Hybrid courses. They are now listed in the non credit area.			

Source: RLC Custom Report, Hybrid and Internet Classes

Section Size

Class Size	FY2013			FY2014			FY2015			FY2016			FY2017		
	Summer 12	Fall 12	Spring 13	Summer 13	Fall 13	Spring 14	Summer 14	Fall 14	Spring 15	Summer 15	Fall 15	Spring 16	Summer 16	Fall 16	Spring 17
Total Classes	Total Classes	Total Classes	Total Classes	Total Classes	Total Classes	Total Classes	Total Classes	Total Classes	Total Classes	Total Classes	Total Classes	Total Classes	Total Classes	Total Classes	Total Classes
2-9	333	535	682	241	572	647	291	541	715	272	535	518	130	296	448
10-19	107	420	421	100	421	365	87	357	357	95	340	282	49	256	248
20-29	41	165	215	45	202	209	34	186	183	34	165	121	29	164	128
30-39	4	49	41	4	35	36	11	48	32	3	32	17	8	25	17
40-49	1	9	10	1	17	8	4	15	15	4	6	1	3	3	1
50-99	3	13	20	1	8	13	1	6	13	3	4	1	0	3	1
100+	0	0	0	3	3	0	4	6	1	0	2	0	0	0	0

Source: RLC Custom Reports: Section Size Report

Active Clubs

Club	Sponsor
Amateur Wireless Radio Club	Ricky Robinson
Art League	Therese Melena
Automotive Club	Nigel Thompson/Shannon Perkins
Careers Without Limits	Kristina Shelton
Collegiate FFA	Kathy Craig
CMYKlub	Jennifer Tarantino-Linsin
Computer Club	Ricky Robinson
Creative Writing Club	Peggy Davis
Culinary Arts Club	Robert Wilson
Fellowship of Christian Athletes	Dave Ellingsworth
GLBTF	Sue Cunningham
Health Information Tech Club	Charlotte Henry
International Studies	Rebecca Biggs
Lambda Nu (Radiology Honor)	Holly Heisner
Nursing Club	Nancy Butry/Kim Wilkerson
Phi Theta Kappa	Jena Jensik
Radiology Club	Holly Heisner
Society for Leadership & Success	Jena Jensik
Student Ambassadors	Jena Jensik
Thespians Club	Tracey Webb

Source: Lisa Price, VP, Student Services

Academic Honors

A Full-time student whose grade point average is 3.5 or better is considered an honor student. Full-time students who compile a perfect 4.0 grade point average during a semester will be named to the Presidents List, while those students compiling between a 3.5 and 3.9 will be named to the Vice Presidents' List. A student must have successfully completed all courses during the semester to be included on the President's or the Vice Presidents' List. Academic honors are announced shortly after the end of fall and spring semesters.

	Fall 2014	Spring 2015	Fall 2015	Spring 2016	Fall 2016	Spring 2017
Presidents List	169	178	155	170	155	158
Vice President's List	269	236	238	246	215	246

Academic Warnings

A degree or certificate seeking student who is enrolled in three or more credit hours during the Fall or Spring Semester and whose grade point average falls below 2.0 will be placed on Academic Probation.

A degree or certificate seeking student who was on Academic Probation during the previous Fall or Spring semester of enrollment and has a current semester and a cumulative GPA of less than 2.0 will be placed on Academic Suspension. Further sanctions will apply as outlined in the current catalog for both academic warnings.

	Fall 2014	Spring 2015	Fall 2015	Spring 2016	Fall 2016	Spring 2017
Probation	248	167	188	105	149	121
Suspension	34	65	36	42	27	47

Source: Kelly Downes, Director of Student Records/Registrar

Tutoring Center

Fall 2015			
Location	# students served	# of hours used	% of successful completers*
Writing Center	157	837	85%
Math Lab	Lab - 86	1485	45%
	Other - 131	575	72%
	Total – 207	2060	64%
Communications Center	42	88	88%
General Tutoring	49	424	81%
Tutoring Totals	455	3408	75%

Spring 2016			
Location	# students served	# of hours used	% of successful completers *
Writing Center	132	875.5	78%
Math Lab	Lab students – 56	961	52%
	Others - 73	656.5	74%
	Total – 129	1617.5	64%
Communications Center	27	78	85%
General Tutoring	29	172.5	76%
Tutoring Total**	316	2746.5	73%

Fall 2016			
Location	# students served	# of hours used	% of successful completers*
Writing Center	185	752	81.08%
Math Lab	Lab – 119	1860	52.94%*
	Other – 109	1215	79.81%
	228	3075	65.78%
Communications Center	21	47	90.47%
General Tutoring	30	151	83.33%
Tutoring Totals	464	4188	74.13%

Spring 2017			
Location	# students served	# of hours used	% of successful completers*
Writing Center	82	259	84%
Math Lab	Lab – 123	1707	61%*
	Other – 61	402	70%
	Total - 184	2109	64%
Communications Center	42	136	86%
General Tutoring	13	111	69%
Tutoring Totals	321	2615	70%

*Students with incompletes not included.

Source: Sue Cunningham

Rend Lake College
Institutional Data
Section II: Student Demographics

Student Demographics

Students by Gender

	2013		2014		2015		2016		2017	
Male	6421	45.84%	7012	47.67%	7676	49.87%	5527	49.06%	3011	49.06%
Female	7585	54.16%	7699	52.33%	7716	50.13%	5738	50.94%	2803	50.94%

Students by Age

	2013	2014	2015	2016	2017
No Birthdate	143	50	56	0	0
16 & under	488	355	732	102	80
17 - 20	2645	2648	2728	2431	2221
21 - 24	1430	1491	1431	1256	763
25 - 30	1596	1766	1945	1497	596
31 - 39	2203	2398	2588	1852	648
40 - 55	3531	3757	3826	2712	1036
56 - 99	1952	2236	2084	1415	470
Unknown	18	10	2	0	0
	14006	14711	15392	11265	5814

Students by Ethnicity

	2013	2014	2015	2016	2017
Asian	116	137	145	125	41
American Indian or Alaska Native	41	58	59	34	20
Black or African American	669	939	831	689	259
Hispanic or Latino	140	156	174	118	67
White	12983	13337	14064	10238	5400
Nonresident Alien	5	2	4	1	3
Native Hawaiian or Other Pacific Islander	1	8	7	6	5
Unknown	51	74	108	54	19

Enrollment by Residency

	FY2013		FY2014		FY 2015		FY 2016		2017	
In-District	8840	63.12%	8599	58.45%	8635	56.10%	6560	58.23%	4261	73.29%
Out of District	4899	34.98%	5728	38.94%	6082	39.51%	4443	39.44%	1477	25.40%
Out of State	262	1.87%	380	2.58%	667	4.33%	259	2.30%	67	1.15%
Foreign Country	5	0.04%	4	0.03%	8	0.05%	3	0.03%	9	0.15%

Enrollment by State

Enrollment by State						
Code		2013	2014	2015	2016	2017
17	Illinois	13751	14335	14714	11009	5747
21	Kentucky	43	66	245	96	24
29	Missouri	97	131	119	68	19
18	Indiana	18	73	69	28	14
54	West Virginia	1	15	40	17	1
42	Pennsylvania	0	8	15	9	0
51	Virginia	4	6	25	8	0
47	Tennessee	5	6	12	8	3
39	Ohio	33	11	62	4	0
99	Foreign	5	4	8	3	0
1	Alabama	6	5	12	2	3
49	Utah	0	0	4	2	0
12	Florida	0	3	1	2	0
45	South Carolina	0	0	0	2	0
26	Michigan	11	13	13	1	0
19	Iowa	2	3	5	1	0
13	Georgia	1	0	3	1	0
37	North Carolina	1	3	3	1	0
48	Texas	2	6	3	1	0
8	Colorado	0	1	2	1	0

Listing top 20 states

Enrollment by County – In-District

Enrollment by County					
	2013	2014	2015	2016	2017
Jefferson	3759	3886	3738	2798	1771
Franklin	3125	3266	3415	2544	1582
Perry	1212	984	1078	873	571
Hamilton	873	772	698	587	408
Wayne	469	191	429	287	135
White	99	155	159	128	43
Small Parts of:					
Washington	279	371	283	237	102
Williamson	581	716	845	555	314

Enrollment by County – Top 15 Counties

Enrollment by County					
	2013	2014	2015	2016	2017
Jefferson	3759	3886	3738	2798	1771
Franklin	3125	3266	3415	2544	1582
Marion	1275	1319	1468	822	206
Perry	1212	984	1078	873	571
Williamson	581	716	845	555	314
Hamilton	873	772	698	587	408
Wayne	469	191	429	287	135
Saline	187	315	392	219	62
Lake	303	455	371	341	1
Jackson	303	273	331	248	151
Washington	279	371	283	237	102
Clinton	281	212	243	180	44
Randolph	147	218	209	203	89
White	99	155	159	128	43
St. Clair	139	164	153	188	54

Source: ICCB A1 Report – Annual Enrollment

Students attending on Chargeback/Contractual Agreements

FISCAL YEAR 2016				
District Number: 521	District Name:	Rend Lake College		
College Name: Rend Lake College	Term:	SUMMER 2015		
College District	Number of Students	Number of Semester Credit Hours	Amt.	Chargeback (CH) Cont. Agree. (CA)
Illinois Eastern Comm Colleges	299	677.5	\$ -	*IA
John A Logan College	37	58	\$ -	CA
Kaskaskia College	4	22	\$ -	CA
TOTAL - Summer 2015	340	757.5	\$ -	
College Name: Rend Lake College	Term:	FALL 2015		
College District	Number of Students	Number of Semester Credit Hours	Amt.	Chargeback (CH) Cont. Agree. (CA)
Illinois Eastern Comm Colleges	684	1183.5	\$ -	*IA
John A. Logan College	11	136	\$ -	CA
Kaskaskia College	16	194.5	\$ -	CA
Lincoln Land Community College	2	27	\$ -	CA
TOTAL - Fall 2015	713	1541	\$ -	
College Name: Rend Lake College	Term:	SPRING 2016		
College District	Number of Students	Number of Semester Credit Hours	Amt.	Chargeback (CH) Cont. Agree. (CA)
Illinois Eastern Comm Colleges	908	2545.5	\$ -	*IA
John A. Logan College	76	190.5	\$ -	CA
Kaskaskia College	17	244.5	\$ -	CA
TOTAL - Spring 2016	1001	2980.5	\$ -	
TOTAL - FY16	2054	5279	\$ -	

FISCAL YEAR 2015

FISCAL YEAR 2015				
College Name: Rend Lake College	Term:	SUMMER 2014		
College District	Number of Students	Number of Semester Credit Hours	Amt.	Chargeback (CH) Cont. Agree. (CA)
Illinois Eastern Community College	685	580	\$ -	CA
John A Logan College	65	101.5	\$ -	CA
Kaskaskia College	8	63	\$ -	CA
Southwestern Illinois College	0	0	\$ -	
Southeastern Illinois College	0	0	\$ -	
Shawnee College	0	0	\$ -	
College of DuPage	1	2	\$ 500.10	CH
TOTAL Summer 2014	759	746.5	\$ 500.10	
College Name: Rend Lake College	Term:	FALL 2014		
College District	Number of Students	Number of Semester Credit Hours	Amt.	Chargeback (CH) Cont. Agree. (CA)
Illinois Eastern Community College	1094	981	\$ -	*IA
John A. Logan College	33	345.5	\$ -	CA
Kaskaskia College	9	96	\$ -	CA
Southwestern Illinois College	2	15	\$ -	CA
Southeastern Illinois College	1	8	\$ -	CA
Shawnee College	0	0	\$ -	CA
TOTAL Fall 2014	1139	1445.5	\$ -	
College Name: Rend Lake College	Term:	SPRING 2015		
College District	Number of Students	Number of Semester Credit Hours	Amt.	Chargeback (CH) Cont. Agree. (CA)
Illinois Eastern Community College	3546	2783.5	\$ -	*IA
John A. Logan College	159	272	\$ -	*IA
Kaskaskia College	7	108	\$ -	CA
Southwestern Illinois College	1	17	\$ -	CA
Southeastern Illinois College	2	14	\$ -	CA
Shawnee College	0	0	\$ -	
TOTAL Spring 2015	3715	3194.5	\$ -	
TOTAL FY 2015	5613	5386.5	\$ 500.10	

FISCAL YEAR 2014

FISCAL YEAR 2014				
College Name: Rend Lake College	Term:	SUMMER 2013		
College District	Number of Students	Number of Semester Credit Hours	Amt.	Chargeback (CH) Cont. Agree. (CA)
Illinois Eastern College	1023	793.5	\$ -	CA
John A. Logan College	40	90.5	\$ -	CA
Kaskaskia College	6	46	\$ -	CA
Southwestern Illinois College	0	0	\$ -	
Southeastern Illinois College	1	3	\$ -	CA
Shawnee College	0	0	\$ -	
TOTAL Summer 2013	1070	933	\$ -	
College Name: Rend Lake College	Term:	FALL 2013		
College District	Number of Students	Number of Semester Credit Hours	Amt.	Chargeback (CH) Cont. Agree. (CA)
Illinois Eastern Community College	1309	1167.5	\$ -	CA
John A Logan College	106	366	\$ -	CA
Kaskaskia College	13	174	\$ -	CA
Lewis & Clark	0	0	\$ -	
Southwestern Illinois College	2	6	\$ -	CA
Southeastern Illinois College	3	19	\$ -	CA
Shawnee College	0	0	\$ -	
TOTAL Fall 2013	1433	1732.5	\$ -	
College Name: Rend Lake College	Term:	SPRING 2014		
College District	Number of Students	Number of Semester Credit Hours	Amt.	Chargeback (CH) Cont. Agree. (CA)
Illinois Eastern Community College	3561	2883	\$ -	CA
John A Logan College	108	280	\$ -	CA
Kaskaskia College	14	216	\$ -	CA
Lincoln Trail College	1	3	\$ 391.83	CH
Southwestern Illinois College	3	9	\$ -	CA
Southeastern Illinois College	6	30	\$ -	CA
Shawnee College	0	0	\$ -	
College of DuPage	1	6	\$ 1,500.30	CH
TOTAL Spring 2014	3694	3427	\$ 1,892.13	
TOTAL FY	6197	6092.5	1892.13	

Enrollment by Student Level

	2013	2014	2015	2016	2017
Freshman	1974	9599	6668	4358	1850
Sophomore	5799	3436	1671	1377	1024
Dual Enrollment	1175	791	1047	354	275
Unclassified	5058	118	5151	4321	1786
Dual Credit		767	855	855	879

Student by Generation

	2013		2014		2015		2016		2017	
Student in the first generation of their family to attend college	9663	69%	10611	72%	11173	73%	8052	71%	3710	64%
Student not in the first generation of their family to attend college	4344	31%	4100	28%	4219	27%	3213	29%	2104	36%

Enrollment by Student Intent

Code	2013	2014	2015	2016	2017
1 - Only complete one or several courses -- not pursuing a Certificate or degree.	10698	12728	12962	8387	3568
2 - To complete a Certificate.	824	280	469	957	470
3 - To complete an Associate degree.	2484	1703	1961	1921	1776

Veteran Status

	2013	2014	2015	2016	2017
Veteran Status	794	918	973	674	365

Transfer Plan

	2013	2014	2015	2016	2017
Not planning to transfer	12413	13470	14280	10019	4572
Planning to transfer to a four-year college or university	1593	1241	1112	1246	1242

Initial Enrollment by Degree/Certificate Objective

Degree Code	Degree/Certificate Type	2013	2014	2015	2016	2017
1	Associate in Arts (AA) (1.1)	827	610	486	448	518
2	Associate in Science (AS) (1.1)	848	760	612	593	472
3	Associate in Applied Science (AAS) (1.2)	718	948	816	788	671
11	Basic Skills (1.7, 1.8, and 1.9)	187	149	122	115	251
18	Vocational Skills (1.6)	7842	9412	10728	6773	2046
19	Not applicable (Courses Enrollee Classification)	99	106	93	47	1
20	Occupational Certificate of 30 Semester Hour or More (1.2)	357	131	98	125	8
30	Occupational Certificate of Less Than 30 SemesterHours (2)	454	260	375	798	281
50	Associate in Fine Arts (AFA) (1.1)	46	27	23	16	11
51	Associate in Engineering Science (AES) (1.1)	10	29	25	17	64
52	Associate of Arts in Teaching (AAT) (1.1)	15	4	3	1	0

** These numbers do not include students who were enrolled in inactive or in Curriculum codes for Dual Credit

Initial Enrollment by PCS Code

	2013	2014	2015	2016	2017
11	4352	3705	3160	2619	2422
12	1628	1445	1382	1758	1095
16	7842	9412	10728	6773	2046
17	79	93	73	56	50
18	105	56	49	59	201

PCS Codes

- 11 = Baccalaureate/Transfer Instruction
- 12 = Career and Technical Instruction
- 16 = Vocational Skills
- 17 = Adult Basic Education
- 18 = Adult Secondary Education

Enrollment by GPA

	FY2013		FY2014		FY2015		FY2016		2017	
	# of Students	Percentage of Students	# of Students	Percentage of Students	# of Students	Percentage of Students	# of Students	Percentage of Students	# of Students	Percentage of Students
Blanks	0	0.00%	194	1.72%	177	1.57%	158	1.40%	0	0.00%
0	7103	63.05%	7346	65.21%	8308	73.75%	4868	43.21%	1598	27.49%
.01 - 1.00	187	1.66%	823	7.31%	509	4.52%	331	2.94%	134	2.30%
1.01 - 2.00	731	6.49%	2074	18.41%	1289	11.44%	1150	10.21%	487	8.38%
2.01 - 3.00	2404	21.34%	2696	23.93%	2709	24.05%	2373	21.07%	1432	24.63%
3.01 - 3.99	2530	22.46%	1407	12.49%	2114	18.77%	2096	18.61%	1637	28.16%
4.00	1052	9.34%	171	1.52%	286	2.54%	289	2.57%	526	9.05%

Enrollment by Highest Degree Previously Earned

Highest Degree Previously Earned		2013	2014	2015	2016	2017
A	Associate Degree	1865	2260	2396	1855	832
B	Bachelor's Degree	1433	1636	1758	1233	489
C	Certificate	568	620	724	476	239
D	Doctoral Degree (Ph.D., Ed.D, D.A., etc.)	82	140	99	88	23
G	GED	704	637	700	479	148
H	High School Diploma	4993	4318	4638	3926	2019
M	Master's Degree	503	671	737	423	149
N	None (Includes high school students who have not yet graduated/received a high school diploma.)	2288	1689	2301	1398	1359
O	Other	57	98	54	33	8
P	First Professional (Dental, Law, Medical, Pharmacy, Theology, Veterinary, etc.)	63	79	69	47	14
S	Some (Persons who successfully passed at least one college level course at another college or university but did not graduate.)	1237	1617	1524	1135	504
U	Unknown	213	946	392	172	30

Rend Lake College
Institutional Data
Section III: Financial Aid

Section III: Financial Aid

Financial Aid by Award Type

	Award Value 2013/14	No. of Recipients	Award Value 2014/15	No. of Recipients	Award Value 2015/16	No. of Recipients	Award Value 2016/17	No. of Recipients
FEDERAL PROGRAMS								
PELL	\$4,069,809.00	1214	\$3,670,458.00	1063	\$3,037,901.00	1028	\$3,024,809	871
SEOG	\$111,300.00	203	\$111,725.00	196	\$105,435.00	208	\$46,209	104
Federal Direct Loan Program	\$0.00	0	\$0.00	0	\$0.00	0	\$0	0
Post 9/11 GI Bill	\$62,914.00	38	\$93,393.00	43	\$90,710.00	41	\$98,064	35
Federal Work Study	\$99,412.00	45	\$97,832.00	41	\$88,633.00	50	\$55,605	46
Scholarships								
Total Federal Programs	\$4,343,435.00	1500	\$3,973,408.00	1343	\$3,322,679.00	1327	\$3,224,687	1056
STATE PROGRAMS								
MAP	\$344,291.00	375	\$288,164.00	318	\$202,477.00	261	\$286,478	307
MAP Plus		0		0		0	\$0	0
ILL Student Assistance Commission		0		0		0	\$0	0
Cooperative Work Study		0		0		0	\$0	0
Senior Citizens Waivers	\$190,637.06	1370	\$139,882.45	1175	\$80,271.89	649	\$62,210	250
Dept. of Rehabilitation Grants (DORS)	\$34,497.00	17	\$48,543.00	14	\$73,483.00	24	\$105,187	36
National Guard Grants	\$14,402.00	9	\$40,034.00	19	\$49,692.00	21	\$34,020	13
Illinois Veterans Grants	\$117,627.00	58	\$85,344.00	40	\$84,076.00	38	\$82,024	33
Dependents of Veterans Scholarships	\$35,994.00	16	\$24,360.00	11	\$14,722.00	6	\$12,045	6
Illinois Veterans Grants (Tuition Waivers)		0		0		0	\$0	0
National Guard Grants (Tuition Waivers)		0		0		0	\$0	0
Workforce Incentive Act (WIA)	\$219,382.00	76	\$167,533.00	45	\$200,609.00	85	\$233,665	76
Total State Programs	\$956,830.06	1921	\$793,860.45	1622	\$705,330.89	1084	\$815,629	721
INSTITUTIONAL PROGRAMS								
Staff Tuition Waiver	\$95,115.00	97	\$88,257.00	80	\$77,199.00	89	\$97,998	54
Talent Waivers (Academic/Athletic)	\$579,845.00	232	\$609,233.00	216	\$619,727.00	149	\$871,717	274
Student Employment								
Scholarships, Grants, Fellowships and Traineeships		0		0		0		
Total Institutional Programs	\$674,960.00	329	\$697,490.00	296	\$696,926.00	238	\$969,715	328

Source: RLC Financial Aid Office

Rend Lake College
Institutional Data
Section IV: Retention, Completion,
and Graduation Rates

Section IV: Retention, Completion, and Graduation Rates

Retention Rates

	Full-time fall cohort	Students from the Full-Time cohort who returned the following fall	Full-time retention rate	Part-time fall cohort	Students from the Part-Time cohort who returned the following fall	Part-time retention rate 2014
Fall 2015 cohort	460	321	70%	70	35	50%
Fall 2014 cohort	518	343	66%	104	53	51%
Fall 2013 cohort	355	221	62%	62	32	52%
Fall 2012 cohort	879	515	59%	255	128	51%
Fall 2011 cohort	1053	639	61%	379	169	47%
Fall 2010 cohort	1112	667	60%	393	172	44%

Source: IPEDS data center

Full-time cohort includes full-time first-time degree/certificate seeking students enrolled at the institution in the fall of the prior year (including those enrolled for the first time the preceding summer term and those whose intent was not known upon entry to the institution). The full-time cohort for 4-year institutions should only include bachelor degree-seeking students. The time period used for reporting cohort numbers should be the official fall reporting date of the institution or October 15 for institutions that have standard academic calendar systems (semester, quarter, trimester or 4-1-4 plan). For institutions that enroll students continuously during the year and use a full-year cohort, the cohort is based on any student enrolled during the period August 1 through October 31. The student status (full- or part-time) should be based on the prior year's fall status, even if this has changed by the current year (e.g., if a student has gone from part-time to full-time, report them as part of the part-time cohort).

IPEDS, 2016-2017 and prior years, Fall Enrollment component

Completions

Total Completers

	FY2013	FY2014	FY2015	FY2016	2017
Total Completers	1455	1252	1390	2218	1202

Completions by Gender

FY2013		FY2014		FY2015		FY2016		FY2017	
Male	Female	Male	Female	Male	Female	Male	Female	Male	Female
646	809	557	695	696	694	1280	938	604	598
44.40%	55.60%	44.49%	55.51%	50.07%	49.93%	57.71%	42.29%	50.25%	49.75%

Completions by Ethnicity

	FY2013	FY2014	FY2015	FY2016	2017
Asian	5	9	5	20	7
Native	5	10	7	5	2
Black or African American	50	26	32	61	39
Hispanic or Latino	19	11	17	21	11
White	1375	1195	1326	2111	1140
Nonresident Alien	0	0	0	0	3
Pacific Islander	0	1	2	0	0
Unknown	1	0	1	0	0

Completions by Term

	FY2013	FY2014	FY2015	FY2016	2017
Summer	182	216	186	165	190
Fall	278	240	285	575	246
Spring	995	796	919	1478	766

Source: ICCB A2 Report

Completions by Degree/Certificate Type

Degree Code	Degree/Certificate Type	2013	2014	2015	2016	2017
1	Associate in Arts (AA) (1.1)	231	203	223	189	186
2	Associate in Science (AS) (1.1)	177	142	181	141	147
3	Associate in Applied Science (AAS) (1.2)	250	204	251	226	257
20	Occupational Certificate of 30 Semester Hours or More (1.2)	108	129	91	147	110
30	Occupational Certificate of Less than 30 Semester Hours (2)	69	565	641	1504	492
50	Associate in Fine Arts (AFA) (1.1)	4	5	1	7	2
51	Associate in Engineering Science (AES) (1.1)	3	1	2	3	8
52	Associate of Arts in Teaching (AAT) (1.1)	3	3	0	1	0

Source: ICCB A2 Completions Report – FY2013-FY2017

Completion Detail by Degree/Certificate Type

PREFIX	NUMBER	CURRICULUM TITLE Master File 5/24/2017	PCS	CIP	ID	CURR HOURS	BEG DATE	STATUS	2013	2014	2015	2016	2017
AA	100	ASSOCIATE OF ARTS	11	240101	1	64	8231982	A	231	203	223	189	186
AAT	133	ASSOCIATE OF ARTS IN SECONDARY MATH	11	131311	52	63	6012015	I	1	1	0	1	0
AAT	146	ASSOCIATE ARTS IS SPECIAL EDUCATION	11	131001	52	64	6012015	I	1		0	0	0
AAT	162	AAT IN EARLY CHILDHOOD EDUCATION	11	131210	52	62	6012015	I	1	2	0	0	0
ABE	1706	BEGINNING ABE LITERACY	17	320106	11	1.5	7012001	A	0	0	0	0	0
ABE	1709	BEGINNING BASIC EDUCATION ABE	17	320111	11	0.5	1012014	A	0	0	0	0	0
ABE	1710	ABE/Beginning Level	17	320112	11	0.5	7011995	A	0	0	0	0	0
ABE	1720	ABE/Intermediate Level	17	320120	11	0.5	7011995	A	0	0	0	0	0
ACP	105	COMPUTER PROGRAMMING	12	110201	3	64	1012007	A	1	1	1	3	6
ADN	3	ASSOCIATE DEGREE NURSING	12	513801	3	64	8012014	A	57	65	51	40	55
AFA	800	ASSOCIATE IN FINE ARTS	11	500702	50	64	8212001	A	0	1	1	0	0
AFA	801	AFA MUSIC PERFORMANCE-INSTRU. OPTION	11	500901	50	64	9282010	A	1	2	0	4	1
AFA	802	AFA MUSIC PERFORMANCE-VOCAL OPTION	11	500901	50	64	9282010	A	3	2	0	3	1
AGRI	4	AGRICULTURAL BUSINESS	12	10101	3	68	8012009	A	13	12	18	16	15
AGRI	5	AGRICULTURAL MECHANICS	12	10201	30	27	8202002	A	12	25	22	24	31
AGRI	6	AGRICULTURAL MECHANICS	12	10201	3	72	8012009	A	4	8	11	13	20
AGRI	7	AGRICULTURAL PRODUCTION & MANAGEMENT	12	10301	20	30	5151992	A	6	7	9	7	13
AGRI	8	AGRICULTURAL PRODUCTION & MANAGEMENT	12	10301	3	71	8012009	A	6	8	7	8	11
ARCH	9	COMPUTER AIDED DRAFTING	12	151302	30	11	8011998	A	3	1	1	11	0
ARCH	10	ARCHITECTURAL TECHNOLOGY	12	151303	20	30	7012015	A	4	4	12	6	1
ARCH	11	ARCHITECTURAL TECHNOLOGY	12	151303	3	69	7012007	A	4	3	12	6	6
AS	200	ASSOCIATE IN SCIENCE	11	300101	2	64	4302010	A	177	142	181	141	147
ASE	1825	LOW ADULT SECONDARY EDUCATION ASE	18	320125	11	1.5	7012001	A		0	0	0	0
ASE	1830	ASE/Advanced Level	18	320130	11	0.5	7011995	A		0	0	0	0
AUTO	12	AUTOMOTIVE TECHNOLOGY	12	470604	20	50	8011998	A	10	4	8	25	8
AUTO	13	AUTOMOTIVE TECHNOLOGY	12	470604	3	69	8152000	A	5	1	6	4	4
AUTO	89	AUTOMOTIVE ENGINE REPAIR	12	470604	30	7	6202000	A	15	11	18	71	4
AUTO	90	AUTOMOTIVE BRAKE	12	470604	30	6	6202000	A	18	9	15	110	4
AUTO	91	AUTOMOTIVE TRANSMISSION	12	470604	30	10	6202000	A	8	6	7	42	6
AUTO	92	AUTOMOTIVE AIR CONDITIONING	12	470604	30	5	6202000	A	18	9	14	50	3
AUTO	93	AUTOMOTIVE ELECTRICAL	12	470604	30	6	6202000	A	14	5	7	33	8
AUTO	94	AUTOMOTIVE SUSPENSION AND STEERING	12	470604	30	6	6202000	A	14	6	9	53	8
AUTO	197	FORD MLR CERTIFICATE	12	470604	30	18	7262011	A	0	2	2	15	0
CDED	63	CHILD DEVELOPMENT	12	190709	20	33	4302010	I	0	1	0	0	0
CMA	1	CERTIFIED MEDICAL ASSISTANT	12	510801	3	66	12022014	A	0	0	0	0	6
CMA	2	CERTIFIED MEDICAL ASSISTANT	12	510801	20	36	11212014	A	0	0	0	15	11
CNS	1	WINDOWS	12	151201	30	11	3042014	A	0	0	0	0	0

PREFIX	NUMBER	CURRICULUM TITLE Master File 5/24/2017	PCS	CIP	ID	CURR HOURS	BEG DATE	STATUS	2013	2014	2015	2016	2017
CNS	2	LINUX NETWORKING	12	151202	30	12	1092014	A	0	0	12	12	10
CNS	3	CYBER SECURITY SPECIALIST	12	111003	30	19	6152015	A	0	0	0	0	1
CNS	79	IT SYSTEMS SPECIALIST	12	151202	3	67	8012012	A	7	11	9	10	11
CNS	80	COMPUTER NETWORKING CERTIFICATE	12	110901	30	14	7012015	A	9	10	10	8	12
CNS	82	PC MAINTENANCE	12	151203	30	8	1012014	A	8	10	9	27	10
CNS	83	PC MAINTENANCE CERTIFICATE	12	151201	30	15	7012012	I	8	11	11	15	11
COSM	1	NAIL TECHNOLOGY	12	120410	30	16	4302013	A		0	5	4	0
COSM	2	BARBER	12	120402	20	50	9192014	A		0	0	0	3
COSM	3	BARBER	12	120402	3	65	2032015	A		0	0	0	0
COSM	4	COSMETOLOGY	12	120401	3	65	2032015	A		0	1	1	0
COSM	5	ESTHETICS	12	120409	20	30.5	6052015	A		0	0	0	0
COSM	6	COSMETOLOGY TEACHER 500 HR TRAINING	12	120413	30	19	11052015	A		0	0	0	0
COSM	7	BARBER TEACHER 1000 HR TRAINING	12	120413	20	37	11202015	A		0	0	0	0
COSM	8	BARBER TEACHER 500 HR TRAINING	12	120413	30	19	11052015	A		0	0	0	0
COSM	122	COSMETOLOGY	12	120401	20	50	9012011	A	24	12	12	15	11
COSM	130	COSMETOLOGY TEACHER 1000 HR TRAINING	12	120413	20	37	11202015	A	0	0	0	0	0
CRJS	1	CYBER FORENSICS SPECIALIST	12	430107	20	24	3212014	A	0	0	0	0	0
CRJS	39	CRIMINAL JUSTICE	12	430107	3	64	6011992	A	17	7	6	5	9
CRJS	98	POLICE SCIENCE	12	430107	30	12	11202000	A	1	0	0	4	0
CRJS	99	CORRECTIONS	12	430102	30	12	11202000	A	1	2	0	9	0
CRJS	110	PRIVATE PROTECTION	12	430107	30	12	7012007	A	3	0	1	1	0
CSCI	62	IT SYSTEMS ASSISTANT	12	520401	3	65	1012007	A	0	0	0	0	0
CSCI	119	PROGRAMMING WITH VISUAL BASIC	12	110202	30	9	3212003	A	0	0	0	8	3
CSCI	128	MICROSOFT USER CERTIFICATE	12	520401	30	15	10162003	A	7	4	7	14	1
CULA	64	CULINARY ARTS MANAGEMENT	12	120503	3	70.0 R	7012010	A	14	9	14	16	10
CULA	189	CULINARY ARTS CERTIFICATE	12	120503	30	27	7012013	A	20	14	17	23	12
CULA	190	BAKING & PASTRY ARTS CERTIFICATE	12	120501	30	28	7012013	A	13	7	10	13	4
DEVP	24	DEVELOPMENT & PREPARATORY STUDIES	14	320101	11	15	7011989	A	0	0	0	0	0
DIEL	107	DIESEL TECHNOLOGY	12	10205	3	66	1012004	A	5	8	14	16	22
DIEL	113	DIESEL TECHNOLOGY	12	470605	20	30	6012011	A	9	25	19	23	37
ECE	1	TECHNICAL ASSISTANCE CREDENTIAL	12	190709	30	16	6012017	A					11
ECE	70	EARLY CHILDHOOD EDUCATION	12	190709	3	67	10012010	A	3	10	9	4	5
ECE	138	EARLY CHILDHOOD ASSISTANT	12	190709	30	6	6222004	A	13	12	4	81	10
ECE	590	EARLY CHILDHOOD CERTIFICATE-LEVEL 2	12	190709	30	12	4092010	A	2	6	6	12	6
ECE	595	EARLY CHILDHOOD CERTIFICATE-LEVEL 3	12	190709	30	27	4192010	A	1	1	4	7	3
ECE	132	DIRECTORS CREDENTIAL	12	190709	30	10	7012015	I	0	1	0	0	0
EMT	1	EMERGENCY MEDICAL TECHNICIAN BASIC	12	510904	30	9	11032014	A	0	0	12	27	11
EMTP	120	EMT PARAMEDIC	12	510904	3	68	8012015	A	1	1	1	1	2

EMTP	121	EMT PARAMEDIC CERTIFICATE	12	510904	20	45	6012012	A	5	6	1	11	9
ENGR	77	ASSOCIATE ENGINEERING SCIENCE	11	140101	51	68	8012014	A	3	1	2	3	8
ESL	1936	BEGINNING ESL LITERACY	19	320136	11	1.5	7012001	A	0	0	0	0	0
ESL	1940	LOW BEGINNING ESL	19	320140	11	0.5	1012014	A	0	0	0	0	0
ESL	1941	HIGH BEGINNING ESL	19	320141	11	0.5	1012014	A	0	0	0	0	0
ESL	1945	LOW INTERMEDIATE ESL	19	320145	11	1.5	7012001	A	0	0	0	0	0
ESL	1950	ESL/Intermediate Level	19	320150	11	0.5	7011995	A	0	0	0	0	0
ESL	1960	ADVANCED ESL	19	320160	11	0.5	1012014	A	0	0	0	0	0
GFM	1	GREEN FACILITIES MANAGEMENT	12	150503	30	16	7132012	A	0	0	3	5	0
GRD	1	GRAPHIC WEB DESIGN CERTIFICATE	12	500409	30	18	5022012	A	0	0	4	0	0
GRD	84	GRAPHIC DESIGN	12	500409	3	67.0 R	7012007	A	4	5	8	2	2
GRD	85	GRAPHIC DESIGN CERTIFICATE	12	500409	20	31.0 R	12012010	A	4	5	8	15	3
HECO	1	HEALTH CARE COACH	12	510000	30	16	10302013	A	0	0	0	0	0
HEQT	87	HEAVY EQUIPMENT TECHNOLOGY	12	470302	3	72	12012010	A	7	6	6	7	9
HHA	1	HOME HEALTH AIDE	12	512602	30	28	7072014	A	0	0	0	0	0
HIT	66	HEALTH INFORMATION TECHNOLOGY	12	510707	3	66	7012014	A	3	0	1	5	6
HORT	1	HORTICULTURE	12	10601	3	65.0 R	7012015	I	2	2	2	2	0
HORT	2	TURF MANAGEMENT	12	10607	30	23.0 R	7012015	I	0	2	1	15	0
IST	1	ROBOTS AND AUTOMATION CERTIFICATE	12	470303	30	18	7062016	A					12
IST	35	IND ELECTRONICS & MAINTENANCE TECH	12	470303	3	72	8012005	A	17	10	13	10	14
IST	37	INDUSTRIAL MAINTENANCE TECHNICIAN	12	470303	30	28	7012003	A	14	10	16	10	18
IST	137	PROGRAMMABLE LOGIC CONTROLLER	12	470105	30	20	11172004	A	16	10	16	16	14
LPN	40	PRACTICAL NURSING	12	513901	20	39	12012015	A	4	55	0	9	2
MACH	136	BASIC MACHINING CERTIFICATE	12	480501	30	18	8012012	A	8	8	5	4	1
MEDC	1	MEDICAL CODING CERTIFICATE	12	510713	30	29	7012014	A	0	5	12	10	5
MFG	1	MANUFACTURING TECHNOLOGY	12	150613	3	64	10152012	A	0	0	0	0	0
MFG	2	MANUFACTURING TECHNOLOGY	12	150405	20	32	11272012	A	0	0	0	0	0
MFG	3	CERTIFIED PRODUCTION TECHNICIAN	12	150613	30	16	6032015	A	0	0	0	0	4
MIN	42	MINING TECHNOLOGY	12	150901	3	72.0 S	8012009	A	5	2	3	1	2
MIN	153	MINE OPERATIONS	12	150901	30	8	10112007	A	7	2	3	13	0
MIN	154	MINE MECHANICS CERTIFICATE	12	150901	30	16	1012016	I	9	2	3	1	0
MIN	155	MINE ELECTRICITY	12	150901	30	18	1012016	I	7	2	3	2	0
MIN	152	ADVANCED MINING	12	150901	30	12	1012016	W	4	2	3	1	0
MLT	67	MEDICAL LABORATORY TECHNOLOGY	12	511004	3	67	11272010	A	6	3	3	3	2
NURA	45	BASIC NURSING ASSISTANT TRAINING	12	513902	30	7	8012012	A	285	260	193	262	148
OFTC	1	OFFICE TECHNOLOGIES ASSISTANT	12	520401	20	30	6032016	A					2
OFTC	2	OFFICE SYSTEMS TECHNOLOGY SPECIALIST	12	520401	3	64	6212016	A					1
OFTC	54	OFF TECH/ADMINISTRATIVE ASST.	12	520401	3	70	1012014	A	10	4	5	8	1
OFTC	56	OFF TECH/OFFICE ASSISTANT	12	520401	20	30	1012014	A	21	4	11	11	2
OFTC	60	OFF TECH/HEALTH INFO ASSISTANT	12	510717	3	72	1012014	A	13	2	9	7	7

PREFIX	NUMBER	CURRICULUM TITLE Master File 5/24/2017	PCS	CIP	ID	CURR HOURS	BEG DATE	STATUS	2013	2014	2015	2016	2017
OFTC	108	MEDICAL TRANSCRIPTIONIST	12	510708	20	34	8012008	A	17	3	11	7	6
OFTC	109	MEDICAL TRANSCRIPTION CLERK	12	510708	30	14	8012008	A	20	7	10	18	4
ONGT	1	OIL AND NATURAL GAS TECHNICIAN	12	150903	3	65	8052014	A	0	0	0	0	0
ONGT	2	OIL AND NATURAL GAS CERTIFICATE	12	150903	30	23	5072014	A	0	0	0	0	0
ORT	75	SURGICAL TECHNOLOGY	12	510909	20	42	7302004	A	4	3	0	3	2
OTA	66	OCCUPATIONAL THERAPY ASSISTANT	12	510803	3	70	8012010	A	3	5	5	4	6
PCA	1	PERSONAL CARE AIDE	12	512602	30	16	11032014	A	0	0	0	7	0
PHAR	1	PHARMACY TECHNICIAN	12	510805	30	16	2252015	A	0	0	0	13	1
PHLE	1	PHLEBOTOMY	12	511009	30	16	5022012	A	2	9	14	25	11
PIW	106	IBEW PROFESSIONAL INSIDE WIREMAN	12	460302	3	67.0 R	4222005	A	3	1	3	1	0
RAD	147	RADIOLOGIC TECHNOLOGY	12	510907	3	69.5	8012015	A	25	15	16	23	17
RAD	159	COMPUTED TOMOGRAPHY	12	510907	30	16	1012010	A	4	2	0	36	2
RAD	160	MRI CERTIFICATE	12	510907	30	16	1272012	A	1	0	0	3	3
SDGB	1	SUSTAINABLE DESIGN	12	150503	30	14	7132012	A	0	0	0	1	0
SURV	116	SURVEYING TECHNOLOGY	12	151102	3	69	7012007	A	0	0	0	0	1
THM	88	THERAPEUTIC MASSAGE	12	513501	30	29	1102012	A	12	9	4	12	0
TRUK	1	TRUCK DRIVER TRAINING	12	490205	30	7	5022012	A	10	13	20	32	24
TRUK	2	HEAVY EQUIPMENT TRANSPORTATION	12	470605	30	26	5022012	A	0	0	0	0	0
UAS	1	UNMANNED AIRCRAFT SYSTEMS	12	150303	30	9	9302015	A	0	0	0	0	29
VET	148	VETERINARY TECHNOLOGY	12	510808	3	67	8012013	A	4	0	4	5	1
VOCS	K1600	VOC SKILLS GENERAL	16	320105	18	30	7011980	A	0	0	0	0	0
VOCS	K1601	VOC SKILLS IN AGRI OCC	16	19999	18	30	7011980	A	0	0	0	0	0
VOCS	K1604	VOC SKILLS IN MARKET & DISTRIB	16	521899	18	30	7011980	A	0	0	0	0	0
VOCS	K1607	VOC SKILLS IN HEALTH OCC	16	519999	18	30	6011992	A	0	0	0	0	0
VOCS	K1609	VOC SKILLS IN OCC HOME EC	16	199999	18	30	7011980	A	0	0	0	0	0
VOCS	K1614	VOC SKILLS IN BUSINESS OCC	16	529999	18	30	6011992	A	0	0	0	0	0
VOCS	K1616	VOC SKILLS IN TECH OCC	16	159999	18	30	7011980	A	0	0	0	0	0
VOCS	K1617	VOC SKILLS IN TRADE & INDUSTRL OCC	16	489999	18	30	7011980	A	0	0	0	0	0
WCT	143	ELECTRONICS FOR WIRELESS COMM	12	150303	30	17	1012016	I	3	1	0	0	0
WCT	144	LAND BASED COMMUNICATIONS SYSTEMS	12	150303	30	18	1012016	I	3	1	0	0	0
WCT	149	WIRELESS COMMUNICATIONS TECHNOLOGY	12	150303	3	71	1012016	I	4	1	0	0	0
WELD	56	WELDING TECHNOLOGY	12	480508	30	24	7012003	A	14	14	26	47	7
WELD	57	PIPE WELDING TECHNOLOGY	12	480508	30	12	7012003	A	9	7	22	71	12
WELD	117	WELDING FUNDAMENTALS	12	480508	30	12	1072003	A	37	21	34	153	11
WELD	118	ADVANCED WELDING TECHNIQUES	12	480508	30	12	1072003	A	15	14	26	43	6
WELD	135	ADVANCED METAL WORKING CERTIFICATE	12	480508	30	19	11172004	A	11	12	20	30	11
WELD	158	WELDING TECHNOLOGY	12	480508	3	65	9192008	A	7	4	13	5	6

Source: ICCB A2 Completion Report FY2013-FY2016

Graduation Rates

Cohort Year	Number completed a degree/certificate within 100% of normal time	Graduation rate - degree/certificate within 100% of normal time	Number completed a degree/certificate within 150% of normal time	Graduation rate - degree/certificate within 150% of normal time
2013	133	38%	179	51%
2012	345	40%	449	51%
2011	458	44%	546	52%
2010	460	42%	566	51%

Cohort Year	Number completed a degree/certificate within 200% of normal time	Graduation rate - degree/certificate within 200% of normal time
2012	459	53%
2011	572	55%
2010	586	53%
2009	482	49%

Rend Lake College
Section V
Student Consumer Information

Section V – Student Consumer Information
 Security Report

CRIMINAL OFFENSE REPORTING TABLE					
OFFENSE	YEAR	GEOGRAPHIC LOCATION			
		ON-CAMPUS PROPERTY	ON-CAMPUS STUDENT HOUSING FACILITIES	NONCAMPUS PROPERTY	PUBLIC PROPERTY
MURDER/NON-NEGLIGENT MANSLAUGHTER	2015	0	0	0	0
	2014	0	0	0	0
	2013	0	0	0	0
MANSLAUGHTER BY NEGLIGENCE	2015	0	0	0	0
	2014	0	0	0	0
	2013	0	0	0	0
RAPE	2015	0	0	0	0
	2014	0	0	0	0
	2013	0	0	0	0
FONDLING	2015	0	0	0	0
	2014	0	0	0	0
	2013	0	0	0	0
INCEST	2015	0	0	0	0
	2014	0	0	0	0
	2013	0	0	0	0
STATUTORY RAPE	2015	0	0	0	0
	2014	0	0	0	0
	2013	0	0	0	0
ROBBERY	2015	0	0	0	0
	2014	0	0	0	0
	2013	0	0	0	0
AGGRAVATED ASSAULT	2015	0	0	0	0
	2014	0	0	0	0
	2013	0	0	0	0
BURGLARY	2015	0	0	0	0
	2014	0	0	0	0
	2013	0	0	0	0
MOTOR VEHICLE THEFT	2015	0	0	0	0
	2014	1	0	0	0
	2013	0	0	0	0
ARSON	2015	0	0	0	0
	2014	0	0	0	0
	2013	0	0	0	0

VAWA OFFENSE REPORTING TABLE

OFFENSE	YEAR	GEOGRAPHIC LOCATION			
		ON-CAMPUS PROPERTY	ON-CAMPUS STUDENT HOUSING FACILITIES	NONCAMPUS PROPERTY	PUBLIC PROPERTY
DOMESTIC VIOLENCE	2015	0	0	0	0
	2014	0	0	0	0
	2013	*	*	*	*
DATING VIOLENCE	2015	0	0	0	0
	2014	0	0	0	0
	2013	*	*	*	*
STALKING	2015	0	0	0	0
	2014	0	0	0	0
	2013	*	*	*	*

ARRESTS AND DISCIPLINARY REFERRALS REPORTING TABLE

OFFENSE	YEAR	GEOGRAPHIC LOCATION			
		ON-CAMPUS PROPERTY	ON-CAMPUS STUDENT HOUSING FACILITIES	NONCAMPUS PROPERTY	PUBLIC PROPERTY
ARRESTS: WEAPONS: CARRYING, POSSESSING, ETC.	2015	0	0	0	0
	2014	0	0	0	0
	2013	0	0	0	0
DISCIPLINARY REFERRALS: WEAPONS: CARRYING, POSSESSING, ETC.	2015	0	0	0	0
	2014	0	0	0	0
	2013	0	0	0	0
ARRESTS: DRUG ABUSE VIOLATIONS	2015	0	0	0	0
	2014	0	0	0	0
	2013	0	0	0	0
DISCIPLINARY REFERRALS: DRUG ABUSE VIOLATIONS	2015	0	0	0	0
	2014	0	0	0	0
	2013	0	0	0	0
ARRESTS: LIQUOR LAW VIOLATIONS	2015	0	0	0	0
	2014	0	0	0	0
	2013	0	0	0	0
DISCIPLINARY REFERRALS: LIQUOR LAW VIOLATIONS	2015	0	0	0	0
	2014	0	0	0	0
	2013	0	0	0	0

Student Right To Know

STUDENT RIGHT TO KNOW																						
FALL 2012 COHORT	ALIEN/UNKNOWN		BLACK		AMER. IND./ALASK.		ASIAN		HISPANIC		WHITE		PACIFIC ISLANDER		RACE UNKNOWN		MULTI		ALL STUDENTS			
	BREAKDOWN		BREAKDOWN		BREAKDOWN		BREAKDOWN		BREAKDOWN		BREAKDOWN		BREAKDOWN		BREAKDOWN		BREAKDOWN		BREAKDOWN			
	MALE	FEMALE	MALE	FEMALE	MALE	FEMALE	MALE	FEMALE	MALE	FEMALE	MALE	FEMALE	MALE	FEMALE	MALE	FEMALE	MALE	FEMALE	MALE	FEMALE	MALE	FEMALE
Full-time, degree/certificate seeking students at RLC	0	0	36	38	5	9	1	0	4	12	623	741	1	2	0	0	1	3	671	805	1476	
Completers of at least 2 but not 4 years	0	0	5	1	1	1	0	0	8	9	216	184	0	0	0	0	0	0	230	195	425	
Transfer-out	0	0	1	0	0	2	1	0	18	5	73	53	0	0	1	0	0	0	94	60	154	
Received Athletically-Related Financial Aid																						
Basketball																						
Completers of at least 2 but not 4 years	0	0	0	0	0	0	0	0	0	0	0	0	0	0	0	0	0	0	0	0	0	0
Transfer-out	0	0	0	0	0	0	0	0	0	0	0	0	0	0	0	0	0	0	0	0	0	0
Baseball																						
Completers of at least 2 but not 4 years	0	0	0	0	0	0	0	0	0	0	2	0	0	0	0	0	0	0	0	0	0	2
Transfer-out	0	0	0	0	0	0	0	0	0	0	2	0	0	0	0	0	0	0	0	0	0	2
Cross Country/Track																						
Completers of at least 2 but not 4 years	0	0	0	0	0	0	0	0	0	0	0	0	0	0	0	0	0	0	0	0	0	0
Transfer-out	0	0	0	0	0	0	0	0	0	0	0	0	0	0	0	0	0	0	0	0	0	0
All Other Sports Combined																						
Completers of at least 2 but not 4 years	0	0	0	0	0	0	0	0	0	0	1	0	0	0	0	0	0	0	1	0	1	
Transfer-out	0	0	0	0	0	0	0	0	0	0	1	0	0	0	0	0	0	0	1	0	1	
Source: ICCB GRS-2 Report																						

STUDENT RIGHT TO KNOW

Right To Know Fall 2011 Cohort	Full-time Students							
	State of Illinois		State Total	State	Kendall College		RLC Total	RLC
	Male	Female		%	Male	Female		%
1. Initial cohort of first-time, full-time degree/certificate seeking students*	15,743	15,395	31,138	100.00%	529	515	1044	100.00%
2. Completers of programs of less than 2 years duration total	898	1099	1,997	6.41%	34	87	121	11.59%
3. Completers of programs of at least 2 years duration but less than 4 years total	2,724	3,024	5,748	18.46%	230	195	425	40.71%
4. Students still enrolled (with no record of transfer-out)	1,696	1,788	3,484	11.19%	8	17	25	2.39%
5. Documented transfer-out student/non-completers (transferred within 3 years) to another institution	3,923	3,810	7,733	38.80%	94	60	154	14.75%
6. Completed within 150% of normal time, still enrolled or documented transfer to another institution	9,241	9,721	18,962	60.90%	366	359	725	69.44%
7. Other students not graduated and not enrolled (includes non-documented transfer-out students)	10,425	9,484	19,909	63.94%	163	156	319	30.56%
8. Number of non-completers (from 7. above) who left in good academic standing	2,905	2,793	5,698	28.62%	79	79	158	15.13%
Source: IPEDS Graduation Rates & ICCB GRS-2 Report								

	ALIEN/UNKNOWN		BLACK		AMER. IND./ALASK.		ASIAN		HISPANIC		WHITE		PACIFIC ISLANDER		RACE UNKNOWN		MULTI		ALL STUDENTS		
FALL 2012	BREAKDOWN		BREAKDOWN		BREAKDOWN		BREAKDOWN		BREAKDOWN		BREAKDOWN		BREAKDOWN		BREAKDOWN		BREAKDOWN		BREAKDOWN		
	MALE	FEMALE	MALE	FEMALE	MALE	FEMALE	MALE	FEMALE	MALE	FEMALE	MALE	FEMALE	MALE	FEMALE	MALE	FEMALE	MALE	FEMALE	MALE	FEMALE	TOTAL
Total number of full-time, degree/certificate seeking undergraduates at RLC	0	0	36	38	5	9	1	0	4	12	623	741	1	2	0	0	1	3	671	805	1476
Received Athletically-Related Financial Aid																					
Total number of students receiving athletically-related financial aid	0	0	14	12	1	0	0	0	0	2	37	56	0	0	0	0	0	0	52	70	122
Football	0	0	0	0	0	0	0	0	0	0	0	0	0	0	0	0	0	0	0	0	0
Basketball	0	0	8	7	0	0	0	0	0	1	5	4	0	0	0	0	0	0	13	12	25
Baseball	0	0	0	0	0	0	0	0	0	0	20	0	0	0	3	0	0	0	20	0	20
Cross Country and Track	0	0	6	5	1	0	0	0	0	0	6	8	0	0	0	0	0	0	13	13	26
All other sports combined	0	0	0	0	0	0	0	0	0	1	6	44	0	0	0	0	0	0	6	45	51

Illinois Community College Board
Section VI
Facts and Figures

Section VI – ICCB Facts and Figures

Summary Profile of the Illinois Public Community Colleges

Illinois Community College Board													
Table 1													
A SUMMARY PROFILE OF THE ILLINOIS PUBLIC COMMUNITY COLLEGES													
Dist. No.	District	District Location	# of Coll.	District Size			2014 Tax Base EAV	2014 Tax Rates Extended			Student Enrollment		FY 16 Annual Tuition & Fee Charges
				2015 Population Total	16 & Over	Square Miles		Educ. & O&M Rate	All Other Tax Rates	Total	Fall 2015 Headcount	Annual FY 15 FTE	
503	BLACK HAWK	Moline	1	219,981	176,746	2,240	\$ 3,619,964,713	19.00	35.85	54.85	5,271	4,513	\$4,050
508	CHICAGO	Chicago	7	2,720,546	2,182,964	230	\$ 64,879,908,794	18.70	0.60	19.30	50,699	41,535	\$3,506 *
507	DANVILLE	Danville	1	85,178	67,316	1,288	\$ 958,251,948	44.79	17.06	61.85	2,692	2,055	\$3,900
502	DUPAGE	Glen Ellyn	1	1,059,100	840,538	350	\$ 36,639,612,040	23.10	7.04	30.14	28,678	19,298	\$4,140
509	ELGIN	Elgin	1	473,394	368,256	343	\$ 10,026,440,546	43.71	17.40	61.10	10,336	7,428	\$3,570
512	HARPER	Palatine	1	516,194	411,321	193	\$ 16,824,424,132	33.71	11.25	44.96	14,532	10,223	\$3,893
540	HEARTLAND	Bloomington	1	214,185	172,182	1,863	\$ 4,240,488,783	22.50	28.08	50.58	5,298	3,741	\$4,260
519	HIGHLAND	Freeport	1	85,975	70,392	1,640	\$ 1,651,976,422	35.50	12.50	48.00	1,804	1,505	\$4,260
514	ILLINOIS CENTRAL	East Peoria	1	372,282	294,804	2,322	\$ 6,844,886,196	24.83	21.78	46.61	9,704	6,371	\$4,050
529	ILLINOIS EASTERN	Olney	4	106,632	86,515	3,066	\$ 1,355,971,691	25.00	21.01	46.01	8,808	4,694	\$2,940
513	ILLINOIS VALLEY	Oglesby	1	145,785	118,271	2,058	\$ 2,994,383,259	17.00	20.07	37.07	3,310	2,406	\$3,570
525	JOLIET	Joliet	1	634,024	490,103	1,434	\$ 17,696,962,322	26.46	4.40	30.86	14,944	9,848	\$3,450
520	KANKAKEE	Kankakee	1	135,352	107,358	1,586	\$ 2,163,186,375	17.90	28.15	46.05	3,306	2,490	\$4,050
501	KASKASKIA	Centralia	1	118,121	95,792	2,231	\$ 1,481,447,436	25.00	33.98	58.98	4,472	3,505	\$3,930
523	KISHWAUKEE	Malta	1	111,738	89,680	831	\$ 1,881,580,168	35.00	36.21	71.21	4,064	2,823	\$3,930
532	LAKE COUNTY	Grayslake	1	679,132	530,563	442	\$ 21,481,556,144	29.60	0.99	30.59	14,964	9,740	\$3,870
517	LAKE LAND	Mattoon	1	185,806	150,599	3,961	\$ 2,615,626,782	18.00	23.96	41.96	5,241	6,657	\$3,459
536	LEWIS & CLARK	Godfrey	1	217,873	175,919	2,044	\$ 3,782,790,454	25.00	39.86	64.86	7,914	3,898	\$3,840
526	LINCOLN LAND	Springfield	1	333,431	268,667	4,115	\$ 5,882,581,871	34.00	13.36	47.36	6,447	5,083	\$3,630
530	LOGAN	Carterville	1	148,214	121,513	1,192	\$ 1,806,195,413	35.00	23.98	58.98	3,575	3,035	\$3,420
528	MC HENRY	Crystal Lake	1	265,220	208,976	600	\$ 6,280,858,927	40.82	2.24	43.06	6,561	4,512	\$3,300
524	MORAIN VALLEY	Palos Hills	1	410,248	326,294	133	\$ 9,303,736,891	30.31	9.96	40.27	15,016	11,066	\$3,990
527	MORTON	Cicero	1	158,193	127,461	17	\$ 1,538,198,334	57.11	10.42	67.53	4,592	3,009	\$3,420
535	OAKTON	Des Plaines	1	474,641	376,755	107	\$ 19,191,924,000	23.96	1.82	25.78	9,864	6,766	\$3,488
505	PARKLAND	Champaign	1	270,717	220,963	2,908	\$ 4,878,191,848	36.00	16.59	52.59	8,147	6,515	\$4,215
515	PRAIRIE STATE	Chicago Hqts.	1	213,188	169,753	220	\$ 3,047,110,481	39.64	6.21	45.85	4,699	3,994	\$4,215
521	REND LAKE	Ina	1	89,105	72,019	1,850	\$ 893,757,772	23.18	31.65	54.83	2,303	2,511	\$3,300
537	RICHLAND	Decatur	1	128,886	103,643	1,114	\$ 2,226,797,738	31.49	11.95	43.44	3,368	2,290	\$3,720
511	ROCK VALLEY	Rockford	1	361,029	285,656	1,033	\$ 5,339,259,046	26.70	21.53	48.23	7,651	5,660	\$3,030
518	SANDBURG	Galesburg	1	104,639	86,115	2,834	\$ 1,621,847,863	22.00	39.91	61.91	2,082	1,485	\$4,500
506	SAUK VALLEY	Dixon	1	98,002	79,516	1,625	\$ 1,578,970,968	27.50	15.23	42.73	1,936	1,581	\$3,330
531	SHAWNEE	Ullin	1	56,532	45,995	1,466	\$ 572,818,519	30.00	48.34	78.34	1,819	1,464	\$3,060
510	SOUTH SUBURBAN	S. Holland	1	271,667	218,935	79	\$ 3,109,474,542	47.03	12.87	59.90	4,205	3,469	\$4,583
533	SOUTHEASTERN	Harrisburg	1	51,034	41,875	1,656	\$ 524,334,126	38.00	34.78	72.78	2,034	1,280	\$3,120
522	SOUTHWESTERN	Belleville	1	452,602	360,906	2,054	\$ 6,494,524,838	15.96	26.03	41.99	9,943	8,147	\$3,420
534	SPOON RIVER	Canton	1	68,585	57,010	1,566	\$ 834,741,944	25.00	34.67	59.67	1,665	997	\$4,200
504	TRITON	River Grove	1	327,156	263,970	55	\$ 7,591,518,565	28.98	4.15	33.13	11,684	6,941	\$3,870
516	WAUBONSEE	Sugar Grove	1	400,361	305,217	624	\$ 7,859,377,538	48.80	5.69	54.49	10,511	7,009	\$3,540
539	WOOD	Quincy	1	95,241	76,775	2,363	\$ 1,433,161,150	22.50	18.54	41.04	2,016	1,423	\$4,410
			48	12,859,988	10,247,335	55,733	\$293,148,840,579	29.97	19.23	49.20	316,155	230,964	\$3,755

* Chicago has variable tuition rates based on number of hours per semester. This rate is based on two semesters at 15 hours each.

ICCB Reimbursable Credit Hours – FY2015

Illinois Community College Board
Table IV-3
FISCAL YEAR 2015 TOTAL REIMBURSABLE CREDIT HOURS*

Dist. No.	District	Baccalaureate	Business	Technical	Health	Remedial	ABE/ASE	Total
503	Black Hawk	58,180.8	5,161.9	15,326.4	9,826.1	9,051.0	22,751.2	120,297
508	Chicago	536,291.0	45,025.5	71,092.0	39,188.5	107,093.0	363,444.5	1,162,135
507	Danville	24,953.5	4,364.5	9,124.5	6,941.0	2,843.0	3,362.0	51,589
502	DuPage	299,638.0	46,971.0	49,086.0	29,475.0	38,771.0	28,039.0	491,980
509	Elgin	112,957.0	12,203.0	17,198.0	12,040.0	16,826.0	24,604.5	195,829
512	Harper	187,054.0	19,712.0	17,347.0	16,007.0	17,335.0	13,571.0	271,026
540	Heartland	67,960.5	2,282.0	4,154.5	5,090.0	9,649.0	10,052.0	99,188
519	Highland	23,051.5	2,121.0	4,656.0	4,426.5	3,759.0	1,928.0	39,942
514	Illinois Central	121,787.0	6,689.0	16,338.5	14,459.0	11,155.0	6,635.0	177,064
529	Illinois Eastern	54,492.5	7,916.0	45,773.5	16,159.5	2,463.0	2,869.0	129,674
513	Illinois Valley	43,349.5	4,216.0	7,987.0	6,422.0	4,011.0	1,652.5	67,638
525	Joliet	180,985.0	10,495.0	30,309.5	18,041.0	27,410.0	12,497.0	279,738
520	Kankakee	36,720.5	3,319.5	7,507.0	11,915.0	7,355.0	6,763.5	73,581
501	Kaskaskia	52,012.5	9,619.5	17,963.0	14,304.5	4,398.0	2,084.0	100,382
523	Kishwaukee	47,590.0	3,788.0	8,368.5	5,499.5	7,615.0	3,034.5	75,896
532	Lake County	158,496.0	10,115.5	23,134.5	14,703.5	25,700.0	21,453.7	253,603
517	Lake Land	77,885.0	27,627.0	55,259.0	20,699.0	6,001.5	2,041.5	189,513
536	Lewis & Clark	74,643.0	8,609.0	15,454.0	7,594.5	7,041.0	4,573.5	117,915
526	Lincoln Land	90,845.5	4,712.5	13,909.5	10,484.5	13,382.0	2,191.0	135,525
530	Logan	49,994.0	11,344.0	14,960.5	17,001.0	4,385.0	4,781.5	102,466
528	McHenry	83,074.0	8,017.0	7,953.0	6,275.0	6,744.0	5,716.5	117,780
524	Moraine Valley	194,687.0	14,358.0	28,620.0	20,867.5	28,507.0	8,804.0	295,844
527	Morton	51,403.0	4,768.0	3,740.0	4,485.0	8,175.0	11,927.5	84,499
535	Oakton	118,398.0	14,423.5	9,725.0	13,141.0	15,360.5	22,691.0	193,739
505	Parkland	92,058.0	16,058.5	24,173.5	12,266.0	12,846.0	5,143.0	162,545
515	Prairie State	63,144.0	3,828.5	6,509.5	7,648.5	10,561.0	5,488.5	97,180
521	Rend Lake	33,942.0	3,744.0	12,010.0	14,371.0	2,180.0	2,549.0	68,796
537	Richland	30,027.5	4,995.0	12,860.5	6,682.0	4,934.0	2,866.5	62,366
511	Rock Valley	108,221.5	5,321.5	15,875.0	7,727.0	12,281.0	8,438.5	157,865
518	Sandburg	24,839.0	1,958.5	2,553.5	5,580.0	2,983.0	2,257.5	40,172
506	Sauk Valley	27,222.0	3,057.5	3,919.5	4,736.5	3,321.0	769.0	43,026
531	Shawnee	23,064.0	3,386.5	2,424.0	6,417.5	2,521.0	6,379.0	44,192
510	South Suburban	44,807.5	6,706.5	5,405.5	7,679.5	12,941.0	6,253.0	83,793
533	Southeastern	19,626.5	3,267.0	4,148.5	5,499.0	1,718.0	916.0	35,175
522	Southwestern	115,693.5	16,266.0	34,134.0	12,769.5	21,149.0	10,569.9	210,582
534	Spoon River	21,534.0	934.5	2,879.5	2,548.5	2,122.5	870.0	30,889
504	Triton	98,531.0	10,944.0	17,483.0	10,487.5	17,242.0	17,230.0	171,918
516	Waubensee	115,682.5	12,698.0	10,760.0	8,946.0	13,434.0	24,161.5	185,682
539	Wood	24,468.0	2,407.0	4,834.0	2,445.5	1,740.0	1,005.0	36,900
STATE TOTALS		3,589,309.8	383,431.4	654,956.9	440,849.6	507,003.5	682,364.3	6,257,915.5

*Total reimbursable SU and SR credit hours.

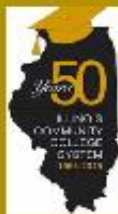
SOURCE OF DATA: ICCB Credit Hour Claims SU and SR submissions

ICCB – Summary of Opening Fall Term FTE Students – FY2006 – FY2015

Illinois Community College Board											
Table I-11											
SUMMARY OF OPENING FALL TERM STUDENT FTE ENROLLMENT											
FALL 2006 THROUGH FALL 2015											
Dist		2006	2007	2008	2009	2010	2011	2012	2013	2014	2015
No.	District/College	FTE	FTE	FTE	FTE	FTE	FTE	FTE	FTE	FTE	FTE
503	Black Hawk	3,932	3,905	3,651	3,722	4,031	3,872	3,761	3,902	3,635	3,126
508	Chicago	(34,421)	(34,131)	(35,480)	(39,469)	(39,934)	(39,350)	(37,588)	(38,054)	(35,172)	(31,148)
	Daley	6,253	5,986	6,089	6,281	5,613	5,280	5,843	6,011	5,364	5,108
	Kennedy-King	3,315	3,791	4,298	4,585	4,271	4,300	4,251	3,991	3,412	2,556
	Malcolm X	4,184	3,867	4,384	5,070	5,567	5,318	4,061	4,329	3,982	3,484
	Olive-Harvey	2,832	2,750	2,612	3,238	3,408	3,265	3,229	3,060	2,712	1,947
	Truman	6,533	6,210	6,319	7,275	7,782	7,650	6,528	6,449	5,808	5,149
	Washington	5,097	5,256	5,108	5,445	5,683	5,867	6,194	6,549	6,680	6,507
	Wilbur Wright	6,208	6,272	6,671	7,574	7,611	7,670	7,482	7,665	7,215	6,398
507	Danville	1,813	1,672	1,676	2,137	2,266	2,106	1,857	1,789	1,623	1,587
502	DuPage	14,431	14,601	14,913	16,036	15,902	15,175	15,397	16,565	16,858	16,310
509	Elgin	5,269	5,195	5,616	6,666	7,009	6,862	6,757	6,675	6,385	6,052
512	Harper	8,793	9,015	9,187	9,526	9,765	9,513	8,639	8,721	8,693	8,353
540	Heartland	2,813	3,006	3,156	3,395	3,508	3,632	3,459	3,319	3,237	3,337
519	Highland	1,390	1,391	1,428	1,606	1,645	1,481	1,348	1,343	1,182	1,162
514	Illinois Central	7,123	6,829	7,030	7,855	7,763	7,193	6,451	6,189	5,862	5,585

529	Illinois Eastern	(3,980)	(3,889)	(3,845)	(4,016)	(3,846)	(3,731)	(3,548)	(3,334)	(3,268)	(3,236)
	Frontier	658	662	669	605	630	604	656	535	539	549
	Lincoln Trail	895	856	820	794	694	713	661	646	655	673
	Olney Central	1,106	1,041	1,011	1,167	1,088	995	958	960	910	874
	Wabash Valley	1,321	1,330	1,345	1,450	1,435	1,419	1,274	1,193	1,163	1,140
513	Illinois Valley	2,409	2,490	2,531	2,843	2,890	2,698	2,419	2,268	2,169	1,991
525	Joliet	7,592	7,879	8,571	9,420	9,801	9,617	9,431	9,636	9,020	8,699
520	Kankakee	1,976	2,037	2,185	2,583	2,767	2,714	2,404	2,315	2,104	1,961
501	Kaskaskia	2,828	2,767	2,751	3,188	3,176	3,005	2,981	2,924	2,637	2,392
523	Kishwaukee	2,789	2,736	2,633	3,074	3,275	3,292	3,126	3,064	2,800	2,500
532	Lake County	8,203	8,560	8,915	9,922	9,975	9,498	9,551	9,463	8,422	8,365
517	Lake Land	4,513	4,325	4,311	4,852	4,990	4,996	3,949	3,841	3,362	3,239
536	Lewis & Clark	3,803	4,004	4,205	4,391	4,598	4,457	4,315	4,348	4,087	3,962
526	Lincoln Land	3,960	4,012	4,156	4,740	4,880	4,630	4,555	4,453	4,323	3,987
530	Logan	3,381	3,564	3,599	3,876	3,567	3,200	3,347	3,081	3,052	2,426
528	Mc Henry	3,197	3,161	3,263	4,222	4,261	3,988	4,168	4,171	3,880	3,739
524	Moraine Valley	9,447	9,678	10,360	10,849	10,846	10,680	10,226	9,965	9,651	9,345
527	Morton	2,417	2,389	2,424	2,803	2,935	2,957	2,712	2,723	2,585	2,596
535	Oakton	5,555	5,626	5,772	6,277	6,307	5,978	5,971	5,753	5,670	5,310
505	Parkland	5,801	5,773	5,811	6,237	5,607	5,501	5,501	5,057	5,101	4,925
515	Prairie State	2,911	3,027	3,001	3,478	3,557	3,496	3,249	3,109	2,812	2,805
521	Rend Lake	2,270	2,443	2,601	2,707	2,705	2,475	2,216	1,887	1,764	1,607
537	Richland	1,740	1,822	1,793	2,077	2,154	2,035	1,817	1,847	1,801	1,778
511	Rock Valley	4,801	4,883	4,951	5,333	5,695	5,428	5,240	5,245	4,940	4,872
518	Carl Sandburg	1,834	1,656	1,600	1,716	1,643	1,537	1,580	1,498	1,416	1,333
506	Sauk Valley	1,522	1,541	1,489	1,671	1,668	1,577	1,470	1,413	1,379	1,221
531	Shawnee	1,186	1,251	1,375	1,667	1,455	1,315	1,040	1,098	1,075	1,078
510	South Suburban	4,040	3,504	4,024	4,185	3,509	4,018	3,616	3,228	2,703	2,523
533	Southeastern	1,447	1,396	1,494	1,386	1,240	1,147	1,141	1,091	1,024	1,043
522	Southwestern	7,759	7,697	8,062	8,375	8,215	7,896	7,437	7,261	6,792	6,382
534	Spoon River	1,166	1,247	1,197	1,224	1,180	1,138	1,067	982	987	986
504	Triton	8,234	8,164	8,351	8,904	8,440	7,946	7,650	6,304	6,030	6,126
516	Waubonsee	4,501	4,634	5,061	5,768	5,961	5,925	6,032	5,761	5,671	5,457
539	John Wood	<u>1,621</u>	<u>1,575</u>	<u>1,599</u>	<u>1,824</u>	<u>1,706</u>	<u>1,618</u>	<u>1,490</u>	<u>1,325</u>	<u>1,313</u>	<u>1,325</u>
	TOTALS	196,868	197,473	204,066	224,021	224,676	217,674	208,508	205,003	194,485	183,870

SOURCE OF DATA: Fall Enrollment (E1 Records) - reflects enrollment as of the fall term census date (end of registration). Will not reflect enrollments in courses that have a starting date later than the census date - particularly those in adult education.



Illinois Community College System

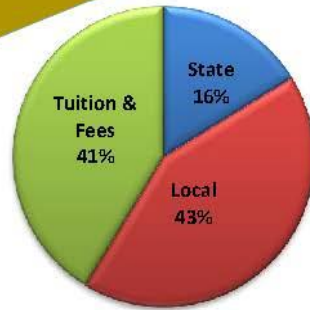
- The Illinois Community College System is the third largest in the nation with 48 community colleges and 39 college districts in Illinois.
- Over 850,000 students taking credit, noncredit, and community education courses walk through the doors of an Illinois community college each year.
- Earning an Associate of Applied Science or long-term certificate from an Illinois community college adds more than \$570,000 in lifetime earnings.
- The average full-time Illinois community college student pays \$3,758 per year in tuition and fees.
- Nine out of 10 of the state's community college graduates live, work, pay taxes, and raise their families in Illinois.
- The "typical" Illinois community college student is 30 years old and enrolled part-time.
- More than two-thirds of all minorities in Illinois public higher education attend community colleges, and nearly 16,000 students with disabilities and 45,000 students with limited English proficiency are served each year.
- Illinois community colleges educate 65 percent of the students enrolled in Illinois public higher education but receive only 15 percent of the state's higher education funding.
- Nearly 74 percent of Illinois employers have hired a community college student and over 26 percent of Illinois employees have completed a credit course at a community college.
- One year after graduation, Illinois' community college occupational graduates averaged a full-time salary of \$35,270 in 2012.
- Illinois was the first state in the nation to "guarantee" its community college occupational graduates; those graduates who need additional technical training may enroll in the appropriate courses at no cost to themselves or their employers.
- College costs can be reduced and students are able to gain access to college-level coursework during high school through dual credit. Community colleges offered 9,714 dual credit courses to 99,153 high school students.

Illinois Community College Board
401 East Capitol Avenue, Springfield, IL 62701

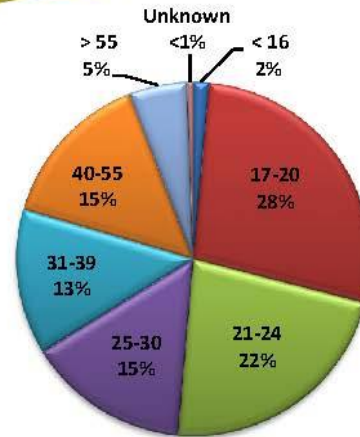
217-785-0123
www.iccb.org

Illinois Community College System

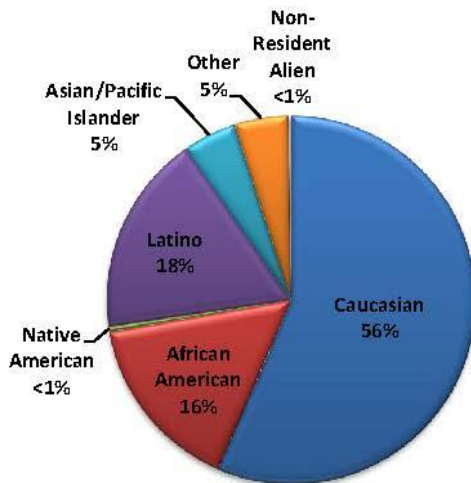
Enrollment & Funding Information
Fiscal Year 2014



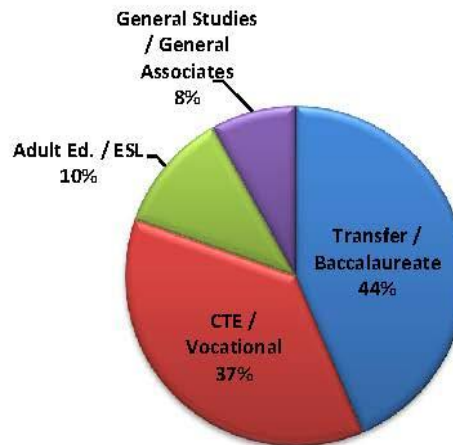
FY14 Sources of Funding



FY14 Enrollment by Age



FY14 Enrollment by Ethnicity



FY14 Enrollment by Program Area

Total Enrollment	FY14	One-Year Change	Five-Year Change	Ten-Year Change
System-wide Credit	659,712	-4.6%	-9.7%	-5.6%
System-wide Non-Credit*	193,812	-4.3%	-23.9%	-24.9%

* Non-Credit is comprised solely of Community Education courses and is derived from unduplicated counts

Completions	FY14	One-Year Change	Five-Year Change	Ten-Year Change
System-wide	69,812	1.1%	22.7%	35.7%

Information compiled by Illinois Community College Board. www.iccb.org 217-785-0123

Data Source: Illinois Community College Board Centralized Data System

Last update - February 2016

Rend Lake College
Section VII
Internal Affairs

Section VII – Internal Affairs

Employees

Total Employees by Status

	Total employees	Full-time employees	Part-time employees
Fall 2012	441	189	252
Fall 2013	469	196	276
Fall 2014	488	195	293
Fall 2015	465	195	270
Fall 2016	364	178	186
Source: IPEDS Data Center			

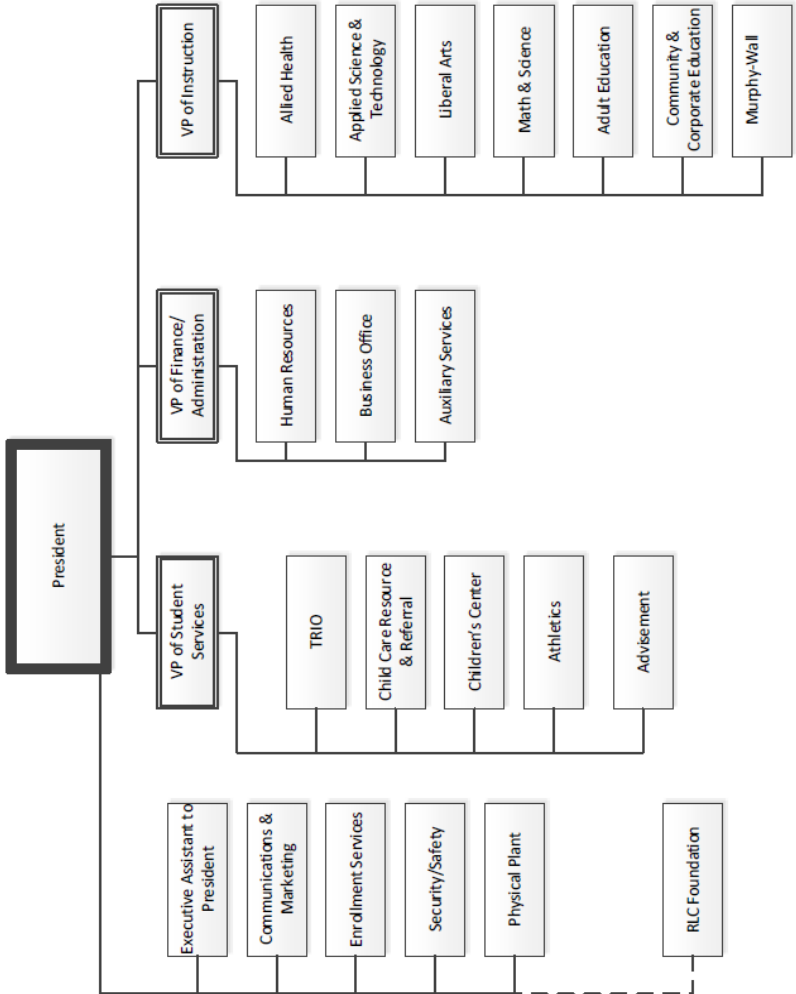
Instructional Employees

Instruction	2012	2013	2014	2015	2016
Total Full time	68	70	67	66	66
Part Time	152	152	162	149	150
Source: RLC Human Resources Department					

Student to Faculty Ratio

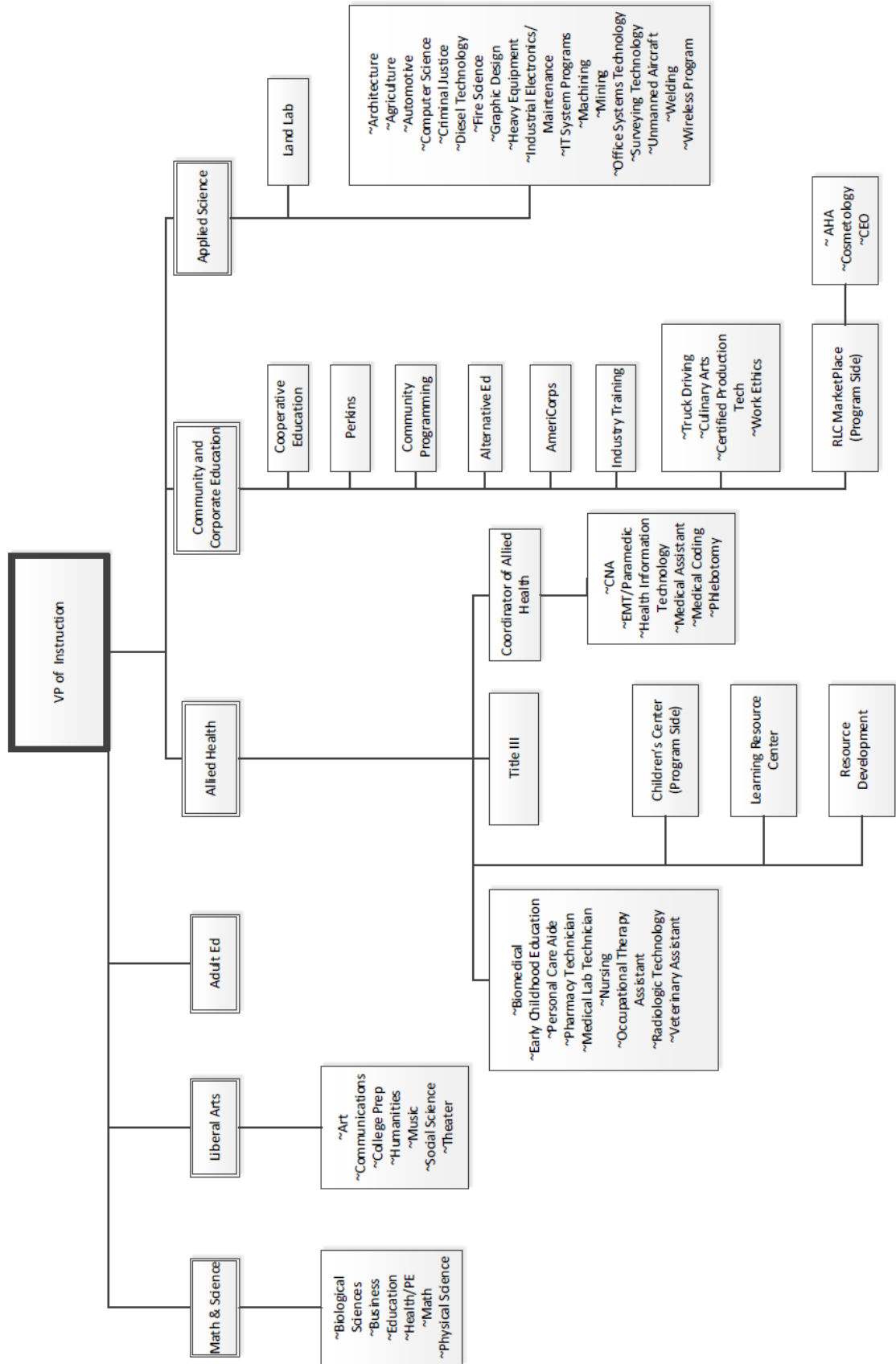
Student to Faculty Ratio	
IPEDS 2013-14	15:01
IPEDS 2014-15	15:01
IPEDS 2015-16	13:01
IPEDS 2016-17	18:01
Source: IPEDS Fall Enrollment Survey	

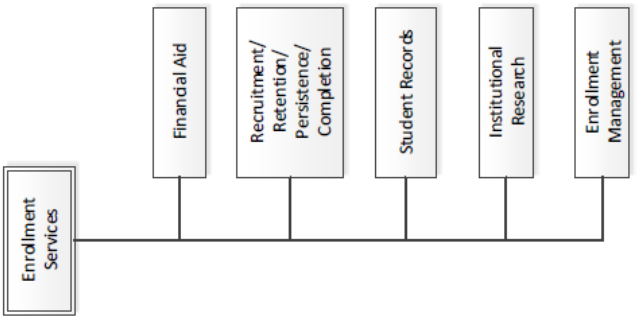
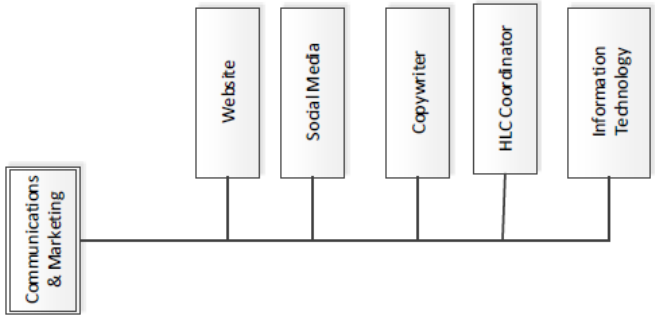
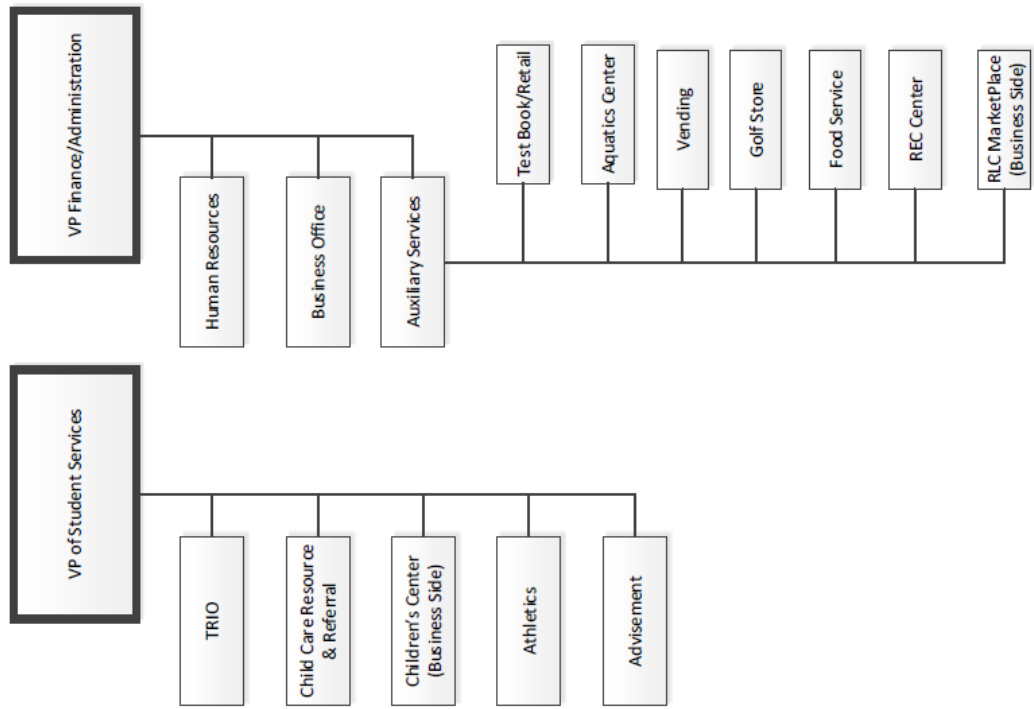
Rend Lake College Organizational Chart



Tier 1

Revised 8/8/17





Faculty/Staff Excellence Awards

Staff Excellence Winners			
2012	Kristina Shelton, Brian Clark		
2013	Beth Stevens		
2014	Rachel Sveda		
2015	Nathan Wheeler		
2016	Joy Fitts, Ron Murray, Kent McKown		
2017	Wesley Rush, Sue Cunningham		
Prior to 2012 winners:			
Chad Cople, Cathy Cross, David Davis, Kelly Downes, Brenda Garvin,			
Frank Hughey, Jean Huie, Beth Mandrell,			
Stephanie McKinney, Donnie Millenbine, Julie Oxford, Lisa Price,			
Lori Ragland, Cheri Rushing, Sue Scattone, Randall Shively			
Part-Time Faculty Excellence Award			
2013	Jim King		
2014	None		
2015	Eric Knapp		
2016	Chris Edwards		
2017	None		
Full-Time Faculty Excellence Award			
2012	Kevin Weston		
2013	Tina Grounds		
2014	Barb Crouse		
2015	Ricky Robinson		
2016	Shari Carpenter		
2017	Carrie Ragan		
Assessment Award			
2012	No Nominees		
2013	Elizabeth Bailey-Smith		
2014	No Nominees		
2015	No nominees		
2016	Rob Little		
2017	Sarah Bilderbeck		
Source: President's Office			

Learning Resource Center

Hours of Operation (beginning 8/14/17)

	Fall & Spring	Summer
Monday - Thursday	7:00 am - 6:00 pm	7:00 am - 4:00 pm
Friday	7:00 am - 4:00 pm	7:00 am - 4:00 pm
Saturday/Sunday	Closed	Closed

	2013	2014	2015	2016	2017
Hours open weekly	56	56	56	53.5	53.5
Gate count weekly (average)	1147	1427	1005	896	1151

Personnel

	2013	2014	2015	2016	2017
Full time professional staff	2	2	1.5	1.5	1
Full time academic support staff	0	0	0	0	0
Full time technical/professional staff	1	1	1	1	1
Full time office support staff	0	0	0	0	0
part time staff (excluding student workers)	2	2	2	2	2

Library Materials

	2013	2014	2015	2016	2017
Total Collection (books, backfiles, other materials)	15991	17016	13804	12998	12794
Magazine Subscriptions (paper)	104	99	107	117	69
Newspaper Subscriptions (paper)	14	14	14	11	6

Electronic Resources (catalogs, databases, streaming videos)	69		44	49	49
Audiovisual Materials (Videotapes, CD, DVD)	2334	1716	1627	1691	1787
E-Journals					24174
E-Books (EBSCO and Cloud Library)	2839	9388	20616	32346	46844

Library Services

	2013	2014	2015	2016	2017
Circulation/Use of Print Material	2,952	2,591	2,258	2,128	1,530
Circulation/Use of Audio Visual Material	643		included as total circulation counts		
Reserve Collection Transactions*	2850	968	603	576	386
Total Interlibrary loans provided to other libraries	1304	1290	2078	2701	2998
Total interlibrary loans received from other libraries	217	293	433	602	478
Storytime Kits circulation	1	20	17	28	71
Reference transactions	988	1478	507	689	153
Number of library tours	4	19	3	2	4
Estimated Total attendance at library tours	5	21	3	2	4
Number of Information Literacy Workshops	34	53	78	90	86
Total attendance at Information Literacy Workshops	1626	1375	1776	1370	1484
Number of searches in Electronic Databases	158580	203801	303558	230006	159162
Number of story hours for Children's Center	82	92	115	56	64
Estimated total attendance at story hours	1,052	1,209	1,548	811	793

*2014 moved to being tracked in Polaris

(sources: LRC stats, ACRL surveys, ILLINET traffic survey)

Information Technology

Location	Make/Model	Specs	# Admin Domain	# Off Network	# Acad. Domain	Total	Main Use	Purchased/Upgraded/Donated	Deep Freeze	Symantic Endpoint Protection	Malware Bytes	Ghost	Individual Counts
FY 2017 Computer Count													
INA CAMPUS													
ACA 202	Dell Optiplex 7010	i7, 6Gb RAM	0	0	1	1	Classroom	2014	1	1	0	0	1
ACA 203	Dell Optiplex 7020	i7, 8Gb RAM	0	0	27	27	Math Lab	2016	27	27	0	0	27
ACA 204	Dell Optiplex 7010	i3, 4Gb RAM	0	0	23	23	ENGL Prep Lab	2013	23	23	0	0	23
ACA 205	Dell Optiplex 7010	i3, 4Gb RAM	0	0	1	1	Class Room	2013	1	1	0	0	1
ACA 206	Dell Optiplex 790 HP Compaq 7700	i3, 4Gb RAM Core 2 Duo, 2Gb RAM	0	0	25	25	ENGL Lab	2011	25	25	0	0	23, 2
ACA 207	Dell Optiplex 7010	i3, 4Gb RAM	0	0	1	1	Class Room	2013	1	1	0	0	1
ACA 208	Dell Optiplex 7010	i3, 4Gb RAM	0	0	1	1	Class Room	2013	1	1	0	0	1
ACA 209	Dell Optiplex 7010	i3, 4Gb RAM	0	0	1	1	Class Room	2013	1	1	0	0	1
ACA 210	Dell Optiplex 7010	i3, 4Gb RAM	0	0	1	1	Class Room	2013	1	1	0	0	1
ACA 211	Dell Optiplex 7010	i3, 4Gb RAM	0	0	1	1	Class Room	2013	1	1	0	0	1
ACA 212	Dell Optiplex 7010	i3, 4Gb RAM	0	0	1	1	Class Room	2013	1	1	0	0	1
ACA 214	Dell Optiplex 7010	i3, 4Gb RAM	0	0	1	1	Class Room	2013	1	1	0	0	1
ACA 215	Dell Latitude E5520 Dell Optiplex 7010	Core 2 Duo, 4Gb RAM i7, 6Gb RAM	0	0	43	43	Computer Lab	2010, 2014	43	43	0	0	42, 1
ADMIN 116	OptiPlex 780 OptiPlex 790	Core 2 Duo, 4GB Ram, Core i3, 4GB Raom	1	0	16	17	Testing Center	2010, 2011	16	17	1	0	17
Admin 129	Latitude 5540		0	0	1	1	Presentations /Webinar	?	0	1	1	0	1
ADMIN 136	OptiPlex 780		0	0	1	1	Presentations /Webinar	?	0	1	1	0	1
ADMIN 152	HP Compaq 7700	Core2Duo, 2Gb RAM	0	0	3	3	Student Services	?	3	3	0	0	3
Aqu-106	Dell Inspiron 5720		0	1	0	1	Swim Team Events	2010	0	1	0	0	1
ASC 101	HP Compaq Vision	AMD Vision Pro	0	0	1	1	Class Room		1	1	0	0	1
ASC 102	HP Compaq 6005	Phenom II	0	0	1	1	Class Room		1	1	0	0	1
ASC 103	HP Compaq Vision	AMD Vision Pro	0	0	1	1	Class Room		1	1	0	0	1
ASC 104	IBM Lenovo Think Center	Vpro	0	0	1	1	Class Room		1	1	0	0	1
ASC 105	HP Compaq 7700	Core 2 Duo, 2Gb RAM	0	0	1	1	Class Room		1	1	0	0	1
ASC 110	HP Compaq 7700	Core 2 Duo, 2Gb RAM	0	0	1	1	Breakroom		1	1	0	0	1
ASC 111	Latitude i5, 4Gb Ram	i5 Tuff Book			1	1	Outside Lab Use	2013	1	1	0	0	1

Location	Make/Model	Specs	# Admin Domain	# Off Network	# Acad. Domain	Total	Main Use	Purchased/Upgraded/Donated	Deep Freeze	Symantic Endpoint Protection	Malware Bytes	Ghost	Individual Counts
ASC 119	HP Compaq 6005	Phenom II	0	0	4	4	Breakroom	SF 2010	4	4	0	0	4
ATC 112	IBM Net Vista HP Compaq 7700 IBM Think Center	Pentium 4, 640Mb RAM Core 2 Duo, 2Gb RAM Pentium 4, 1Gb RAM	0	9	0	9	Robotics Lab	2004	Ricky	Ricky	0	0	7, 1, 1
ATC 118	Dell Optiplex 7010	i7, 6Gb RAM	0	0	1	1	Classroom	2014	1	1	0	0	1
ATC 140	Dell Optiplex 7010	i7, 6Gb RAM	0	0	1	1	Classroom	2014	1	1	0	0	1
ATC 142	Dell Optiplex 7010	i7, 6Gb RAM	0	0	1	1	Classroom	2014	1	1	0	0	1
ATC 143	Dell Optiplex 7010	i7, 6Gb RAM	0	0	1	1	Classroom	2014	1	1	0	0	1
ATC 144	IBM ThinkPad	Pentium 4, 2Gb RAM	0	9	0	9	Electronics Lab	2009	Ricky	Ricky	0	0	9
ATC 149	Dell Latitude e6520	i5, 4Gb RAM	0	0	3	3	Breakroom Usage	2012	3	3	0	0	3
ATC 151	Dell Optiplex 7010, HP ProBook 450	i7, 6Gb RAM, i7, 8Gb RAM	0	0	6	6	Classroom	2014, 2016	6	6	0	0	6
ATC 156	Dell Optiplex 7010	i7, 6Gb RAM	0	0	1	1	Classroom	2014	1	1	0	0	1
ATC 163	Dell Optiplex 7010 Hp Compaq DC 7700 Dell Latitude E6500	i7, 6Gb RAM Core 2 Duo, 2Gb Ram Core 2 Duo, 2Gb RAM	0	2	4	6	Electronics	2014	6	6	0	0	4, 1, 1
ATC 165	Dell Optiplex 760	Core 2 Duo, 4Gb RAM	0	29	0	29	Networking	2009	Ricky	Ricky	0	0	29
ATC 166	Dell Optiplex 7010	i7, 6Gb RAM	0	0	1	1	Classroom		1	1	0	0	1
ATC 167	Dell Optiplex 7010	i7, 6Gb RAM	0	0	1	1	Class Room		1	1	0	0	1
ATC 175	Dell Optiplex 7040	i7, 8Gb RAM	0	0	21	21	Computer Science	2017	21	21	0	0	21
ATC 176	Dell Optiplex 790	i3, 4Gb RAM	0	0	22	22	Computer Lab	2011	22	22	0	0	22
ATC 177	Dell Precision T5500 IBM Think Center	Xeon E5504, 12Gb RAM Pentium 4, 1Gb	0	45	0	45	Networking, Computer Forensics	2007	Ricky	Ricky	0	0	21, 24
ATC 178	Dell Optiplex 7040	Intel i7 6th, 8Gb Ram	0	0	21	21	Programing Lab	2016	21	21	0	0	21
ATC202	Dell Optiplex 7010	i7, 6 Gb RAM			1	1		2013	1	1	0	0	1
ATC 194	HP Compaq 7700	Core 2 Duo, 4Gb Ram	0	0	1	1	Classroom		1	1	0	0	1
ChiCtr 128	Dell Optiplex 7010	i7, 6 Gb RAM	0	1	0	1	Pre-K Room	2013	1	1	0	0	1
CMT 107	Dell Optiplex 7010	i7, 6Gb RAM	0	0	1	1			1	1	0	0	1
CMT 107a	Dell Optiplex 760	Core 2 Duo	0	0	1	1			1	1	0	0	1
CMT 108	HP Compaq 7700	Core 2 Duo, 4Gb Ram	0	0	4	4	Breakroom	2006	4	4	0	0	4
LRC 103	Dell Optiplex 7010	i7, 6Gb RAM	0	0	1	1			1	1	0	0	1
LRC 107	Dell Optiplex 760	Core 2 Duo, 4Gb RAM	0	0	1	1	Music Classroom	2009	1	1	0	0	1
LRC 114	Dell Latitude E5540 Dell Latitude E6500	i5, 8Gb RAM Core 2 Duo, 3Gb RAM	0	0	33	33			33	33	0	0	32, 1
LRC 115	Dell Latitude E6500	Core 2 Duo, 2GbRAM	0	0	2	2	Quiet Study Room		2	2	0	0	2

Location	Make/Model	Specs	# Admin Domain	# Off Network	# Acad. Domain	Total	Main Use	Purchased/Upgraded/Donated	Deep Freeze	Symantic Endpoint Protection	Malware Bytes	Ghost	Individual Counts	
LRC 119	Dell Latitude E6500	Core 2 Duo, 2Gb RAM	0	0	2	2	Children's Library		2	2	0	0	2	
LRC 127	Dell Latitude E5530	i5, 4Gb RAM	3	0	0	3	AV Loaners		0	3	3	0	3	
LRC 128	Dell Optiplex 7020	i7, 8Gb RAM	0	5	24	29	Open Lab (Count as 4 Labs)	2016,2015, 2015,7,7	49	49	0	0		
LRC Pod 1 West	Dell Latitude E5540	i5, 8Gb RAM	0	0	6	6			6	6				
LRC Pod 2 Center	Dell Latitude E5530	i5, 8Gb RAM	0	0	6	6			6	6				
LRC Pod 3 East	Dell Latitude E5520	4Gb RAM	0	0	4	4			4	4				
LRC 142	Dell Latitude E5540 HP Compaq 7700 Dell Venue Pro Tablets Dell Latitude e6540	i5, 8Gb RAM Core 2 Duo, 2Gb RAM Core i5 8 Gb RAM	1	2	17	20	HSSSC Nursing Tutoring	2015, 2015	17	20	1	0	11, 1, 2, 6	
LRC 166	Dell Latitude E6530	i7, 6 Gb RAM	0	0	1	1	Art Closet		1	1	0	0	1	
LRC 201	Dell Latitude E6500	Core 2 Duo, 2Gb RAM	0	0	2	2	Nursing Sim Lab		2	2	0	0	2	
LRC 203	Dell Latitude E6500	Core 2 Duo, 2Gb RAM	0	0	1	1	Nursing Sim Lab		1	1	0	0	1	
LRC 205	Dell Optiplex 7020	i7, 8Gb RAM	0	0	31	31	Computer Lab	2016	31	31	0	0	31	
LRC 206	HP Compaq 7700	Core 2 Duo, 2Gb RAM	0	0	1	1	Classroom		1	1	0	0	1	
LRC 207	Dell Optiplex 7010	i7, 6Gb RAM	0	0	1	1	Classroom		1	1	0	0	1	
LRC 211	Dell Optiplex 7010	i3, 4Gb RAM	0	0	1	1	Music Classroom		1	1	0	0	1	
OSN 101	Dell Optiplex 7010	i7, 6Gb RAM	0	0	8	8	Math/Writing Lab (Count as 2 Labs)		8	8	0	0	8, 6	
OSN 101	HP compaq		0	0	6	6			6	6	0	0		
OSN 122	Dell Optiplex 760	Core 2 Duo, 4Gb RAM	0	0	1	1	Tutoring		1	1	0	0	1	
OSN 123	Dell Optiplex 760	Core 2 Duo, 4Gb RAM	0	0	1	1	Tutoring		1	1	0	0	1	
OSN 124	Dell Optiplex 760	Core 2 Duo, 4Gb RAM	0	0	1	1	Tutoring		1	1	0	0	1	
OSN 125	HP Compaq 7700	Core 2 Duo, 4Gb RAM	0	0	1	1	Tutoring		1	1	0	0	1	
OSN 131	Dell Latitude E5540 Dell Latitude E6530	i5, 8Gb RAM i7, 6Gb RAM	1	0	7	8	LEC Lab		7	8	1	0	7, 1	
OSS 115	Dell Latitude E5540	i5, 8Gb RAM	0	0	3	3	Stars Tutoring		3	3	0	0	3	
SCI 106	Dell Optiplex 7010	i3, 4Gb RAM	0	0	1	1	Classroom		1	1	0	0	1	
SCI 108	Dell Optiplex 7010 Dell Latitude E5530	i7, 6Gb RAM i5, 4Gb RAM	0	0	7	7	Science Lab	2013	7	7	0	0	7	
SCI 109	Dell Optiplex 7010	i7, 6Gb RAM	0	0	1	1	Science Lab		1	1	0	0	1	
SCI 110	Dell Optiplex 7010	i3, 4Gb RAM	0	0	1	1	Lecture Hall		1	1	0	0	1	
SCI 115	Dell Optiplex 7010 Dell Latitude E6530	i7, 6Gb RAM i7, 6Gb RAM	0	0	13	13	Science Lab	2013	13	13	0	0	1, 12	
SCI 116	Dell Optiplex 7010	i7, 6Gb RAM	0	0	1	1	Science Lab		1	1	0	0	1	
SCI 117	Dell Optiplex 7010	i7, 6Gb RAM	0	0	1	1	Science Lab		1	1	0	0	1	

Location	Make/Model	Specs	# Admin Domain	# Off Network	# Acad. Domain	Total	Main Use	Purchased/Upgraded/Donated	Deep Freeze	Symantic Endpoint Protection	Malware Bytes	Ghost	Individual Counts
SCI 120	Dell Optiplex 7010	i7, 6Gb RAM	0	0	1	1	Distance Learning		1	1	0	0	1
SCI 122	Dell Optiplex 7010	i7, 6Gb RAM	0	0	1	1	Lecture Hall		1	1	0	0	1
SCI 132	Dell Optiplex 7010	i7, 6Gb RAM	0	0	1	1	Distance Learning	2013	1	1	0	0	1
SCI 137	Dell Latitude E5540	i5, 8Gb RAM	0	0	21	21	Anatomy Lab	2015	21	21	0	0	21
SPC 104	Dell Latitude E6500	Core 2 Duo, 2Gb RAM	0	1	0	1	Baseball Stats	2010	0	1	0	0	1
STC 103	Custom Desktop, Dell Venue 8 Tablets	2 Xenon, 8Gb RAM; Intel Atom. 2GB RAM	0	3	1	4	Culinary Arts Lab	2010	4	4	0	0	1
VOC 102	Dell Optiplex 7020	i7,	0	0	1	1	Drafting Classroom		1	1	0	0	1
VOC 103 and Voc 103b	Dell Precision T3600 Dell Precision T1600	Xeon E5-1607, 8Gb RAM Xeon, 16Gb RAM	0	0	21 1	21 1	Auto CAD Lab and 3d Printer Computer (Count as 1 Lab)	2012 2009	21 1	21 1	0 0	0 0	21 1
VOC 104	Apple iMac	Core 2 Duo, 4Gb RAM	0	0	23	23	Graphic Design Lab	2009	23	23	0	0	23
VOC 105	Optiplex 7010	i7, 6Gb RAM	0	2	0	2	CNC, Laser Engraver	2013	0	0	0	0	2
VOC 109	HP Compaq	AMD Vision Pro	0	0	1	1	Classroom		1	1	0	0	1
VOC 110	HP Compaq 6005 Dell Latitude E6500 IBM Thinkpad	Phenom II, 4Gb RAM Core 2 Duo, 3Gb RAM Pentium M	0	0	15	15	Auto Classroom		15	15	0	0	13, 1, 1
VOC 117	Dell Optiplex 7010	i3, 4Gb RAM	0	0	1	1			1	1	0	0	1
VOC 118	Dell Optiplex 7010 Dell Latitude E5540	i3, 4Gb RAM i5, 4Gb RAM	0	0	13	13	Computer Lab		13	13	0	0	1, 12
VOC 120	IBM Think Center	Pentium 4, 1Gb RAM	0	1		1			1	1	0	0	1
VOC 123 and VOC 124	HP Compaq 6005 HP Compaq 7700 HP Compaq 6005	Phenom II, Core 2 Duo, 2Gb RAM Phenom II	0	0	5 1	5 1	Automotive Bay (Count as 1 Lab)		5 1	5 1	0 0	0 0	2, 3 1
VOC 125	HP Compaq 6005	Phenom II	0	0	1	1	Classroom		1	1	0	0	1
ChiCtr	Surface Pro Tablets	Surface Pro 2, Surface Pro 3,	6	0	0	6			0	6	6	0	2, 4
Ag Program	Samsung Galaxy 4	Galaxy 4 Tablet	0	0	7	7		2015	0	0	0	0	7
STARS Loaners				32		32			32	32	0	0	32
Faculty/ Staff/ Misc.	Faculty & Staff	Laptops and Desktops	308			308				308	308	0	308
	Library	Surface Pro 3		1		1		2014	0	1	1	0	1
	LRC 132	Optiplex 7010, Latitude E6520, Venue Pro	4	2		6	Sandbox/Assurance Review Office		0	6	6	0	1, 3, 2
	Dell Venue 11 Pro Tablet	Model 7130 i3		10		10	original purchase	2015	0	10	10	0	10
	Dell Venue 11 Pro Tablet	Atom Processor		20		20	17 original purchase + 5 for ag - two counted in Sandbox	2015	0	20	20	0	20
Mandrell Grant	Dell Venue 11 Pro Tablet	Atom Processor		1		1		2015	0	1	1	0	1
Kent, Garrett	Surface Pro Tablets 4	i7 Processor	2			2		2016	0	2	2	0	2
Adult ED	Venue 11 Pro Tablet	Intel i3 Processor		21		21		2015	21	21	0	0	21
On Campus Totals			326	197	553	1076			629	995	362	0	

IT - Off Campus

Off Campus Computers DL/HS													
Continental Tire	HP Compaq DC 7700	Core 2 Duo, 4Gb RAM	0	1	0	1	Counseling	2009	0	1	1	0	1
Webber	Dell Optiplex 7010	i7, 6Gb RAM	0	1	0	1		2013	1	1	1	1	1
Wayne City	Dell Optiplex 7010	i7, 6Gb RAM	0	1	0	1		2013	1	1	1	1	1
Thompsonville	Dell Optiplex 7010	i7, 6Gb RAM	0	1	0	1		2013	1	1	1	1	1
Waltonville	Dell Optiplex 7010	i7, 6Gb RAM	0	1	0	1		2013	1	1	1	1	1
Ham. Co.	Dell Optiplex 7010	i7, 6Gb RAM	0	1	0	1		2013	1	1	1	1	1
	DL/HS Totals		0	6	0	6			5	6	6	5	

IT - Murphy Wall

Murphy-Wall													
PNK 102	Dell Optiplex 7010	i7, 6Gb RAM			23	23	Computer Lab	2015	23	23	0	23	23
PNK 101	Dell Optiplex 7010	i7, 6Gb RAM	0	0	1	1	Smart Room	2015	1	1	0	1	1
PNK 113	Dell Optiplex 7010	i7, 6Gb RAM	0	0	1	1	Distance Learning	2015	1	1	0	1	1
PNK 115	HP Compaq 7700	Core 2 Duo, 2Gb RAM	0	5	0	5	Study Area	2011	5	5	0	5	5
PNK 116	Dell Latitude e5540, Dell Optiplex 7010	i7, 8Gb RAM	0	0	6	6	Science Classroom		6	6	0	6	6
PNK 112	HP Compaq 7700	Core 2 Duo, 2Gb RAM		0	2	2	Testing		2	2	2	2	2
Faculty/Staff		i3 Processor, 4Gb RAM	2			2				2	2	2	2
	Murphy-Wall Totals		2	5	33	40			38	40	4	40	

IT - RLC Market Place

RLCMP													
RLM 328	Dell E6520 Laptops 8830 Machines				6	6	Adult Ed Classroom	2005	6	6	0	6	4, 2
RLM 330	Dell 7010, E6520				4	4	Testing		4	4	0	4	3, 1
RLM 338	Dell 755	Core 2 Duo, 2Gb RAM			21	21		2009	21	21	0	21	21
RLM Coffee Shop	HP Compaq DC 7700	Core 2 Duo, 4Gb RAM	0	4	0	4	Free Use Computers	2009	4	4	0	4	4
RLM 226	Dell All-in-One				10	10	SIU-Carbondale	2015	10	10	0	10	10
Golf Store	Dell Optiplex 7010	i7, 6Gb Ram	0	3	0	3	POS System	2013	0	1	0	3	3
Golf Store	Dell Optiplex 780	Core 2 Duo, 4Gb RAM	0	1	0	1	Extra Computer for back Office	2010	0	1	1	1	1
Smart/P					14	14			14	14	0	14	14
Laptop for Corey	Dell Latitude E6520	i5, 4Gb Ram		1		1	Corye is teaching off campus	2012		1	1	1	1
Faculty/ Staff /Misc.			16			16				16	16	16	16
	RLCMP Totals		16	9	55	80			59	78	18	80	

Location	Make/Model	Specs	# Admin Domain	# Off Network	# Acad. Domain	Total	Main Use	Purchased/Upgraded/Donated	Deep Freeze	Symantic Endpoint Protection	Malware Bytes	Ghost	Individual Counts
Ina Campus Computer Totals													
			Total	Total	Total	All			Total	Total	Total	Total	
			326	197	553	1076			629	995	362	0	
Off Campus Computer DL/HS Totals													
			Total	Total	Total	All			Total	Total	Total	Total	
			0	6	0	6			5	6	6	5	
Murphy-Wall Campus Totals													
			Total	Total	Total	All			Total	Total	Total	Total	
			2	5	33	40			38	40	4	40	
RLCMP Totals													
			Total	Total	Total	All			Total	Total	Total	Total	
			16	9	55	80			59	78	18	80	
Overall Totals FY 2017													
			Total	Total	Total	All			Total	Total	Total	Total	
			344	217	641	1202			731	1119	390	125	10 SIU
Color Code Key:													
Color Code Key:			2016	2016	2016	2016			2016	2016	2016	2016	
			347	235	633	1215			705	1113	408	131	
Difference From FY 2016 to FY2017													
			-3	-18	8	-13			26	6	-18	-6	

Student Computer Lab	Other Student Computers & Tablets	Faculty/Staff Computers and Tablets	Special Use Computers	Smart/Presentation /DL Classrooms	Total
Ina Campus Computer Totals					
Total	Total	Total	Total	Total	Total
575	64	357	27	52	1075
Off Campus Computer DL/HS Totals					
Total	Total	Total	Total	Total	Total
0	0	0	1	5	6
Murphy-Wall Campus Totals					
Total	Total	Total	Total	Total	Total
34	0	2	2	2	40
RLCMP Totals					
Total	Total	Total	Total	Total	Total
31	0	17	18	14	80
Overall Totals FY 2017					
Total	Total	Total	Total	Total	Total
640	64	376	48	73	1201

Source: Kent McKown, RLC IT Dept

RLC Grant Awards

Grants - FY 2017-2018

Agency	CFDA or Funding Opportunity #	Total Original Grant Award	AmountYTD	Project Director	Description of Grant	Project Period	App/Plan Required	Reports Due
Fed-ED-Title IV-TRIO SSS-Year 4	P042A101147	\$ 1,335,670.00	\$ 212,298.83	Stallman	Academic assistance and counseling support services to eligible low income, first-generation, or disabled college students.	9/1/16-8/31/17	Yes	Annual
Fed-ED-Title IV-TRIO Upward Bound-Year 3	P147A121717	\$ 773,771.00	\$ 127,621.14	Stallman	Program designed to assist low-income high school students who will be first-generation college students through tutoring, mentoring and career planning.	9/1/16-8/31/17	Yes	Annual
Fed-ED-Title III-Part A-Pathways to Success in Health Careers	P031A130058	\$ 2,249,833.00	\$ 413,898.96	Kim Wilkerson	Establish A&P lab and revise curriculum, increase capacity and success in nursing programs, develop a Pharmacy Technician certificate and an AAS in Biomedical technology, develop Health Studies advising and tutoring systems, develop Health Studies Success Center.	10/1/16-9/30/17	Yes	Annual
Legacy for Health-Smoke-Free Tobacco Free Community		\$ 5,000.00	\$ 5,000.00	Kim Wilkerson	Fund activities to become a 100% smoke/tobacco-free campus	4/1/16-3/31/17	Yes	Semi annual, Final
Legacy for Health-Smoke-Free Tobacco Free Community		\$ 4,410.00		Kim Wilkerson	Fund activities to become a 100% smoke/tobacco-free campus	4/1/16-12/30/17	Yes	Semi annual, Final
Fed-State-IDHS-Child Care Resource & Referral (CCR&R) Program	IDHS contract # FCST100654	\$ 1,034,775.00	\$ 741,732.60	Brockhouse	Funding to recruit and train child care providers. Help parents find child care. Provide training to child care providers. Nurse promotes health & safety issues, quality counts public education campaign aimed at parents. Child care subsidy.	7/1/16-6/30/17	Yes	Mo. Financial Rpts. & Qtr. & Annual Progress Rpts.
ICCB Career Pathways		\$ 5,000.00		Shelton		7/1/2016-30/2017	Yes	Midterm and final
ICCB/Special Populations		\$ 10,000.00	\$ 5,000.00	Shelton		7/1/2016-6/30/2017	Yes	Midterm and Final
State- ICCB- Pathways to Results	84.048	\$ 20,000.00	\$ 14,844.00	Shelton	To increase 3P1 Perkins Performance measure, Automation of Degree Audit and Early Alert system	7/1/2015-12/31/2016	Yes	Midterm and Final
Fed-State- ICCB-CTE-Perkins Postsecondary		\$ 168,054.00	\$ 149,893.00	Ragland	Funds for supporting career and technical education programs.	7/1/16-6/30/17	Yes	Qtr. & Final Report
State-ISBE-Voc Ed-Program Improvement Grant			\$ 23,407.00	Ragland	Funds to enhance instruction and academic support activities that strengthen and improve career-technical education.	7/1/14-6/30/15	No	Annual
Federal Pell		\$ 2,879,430.00	\$ 2,879,430.00					
Fed-State-CNCS-IDHS-Americorps		\$ 445,034.00	\$ 345,819.58	Rounds	Program where volunteers give 1 year of community service in district public schools for a living allowance and an educational award.	8/01/16-8/31/17	Yes	Annual-Nov.
Local JTPA		\$ 260,403.40	\$ 260,403.40					
State-ISBE-Early Childhood Pre-K Block Grant	2015-3705-00-25-041-5210-51	\$ 93,012.00	\$ 66,286.32	May	Pre-K staffing, equipment, and training for the RLCF Children's Center.	7/1/16-6/30/17	Yes	Quarterly
Fed-MSHA-Brookwood Sago	BS-29801-16-60-R-17	\$ 133,240.00	\$ 56,869.09	Nielsen	Develop Mine Safety/Rescue curriculum and provide training to mine rescue teams.	9/30/16-9/29/17	Yes	Quarterly Financial and Performance Reports
Fed-Ed Robotics Program Grant	06-69-06001	\$ 93,001.20	\$ 93,001.20	Nielsen	New Robotics	10/1/2015-9/30/2016	Yes	Semi-annual
Fed-USDA-Rural Development-Distance Learning and Telemedicine Grant Program			\$ 6,806.15	SICCM	Purchase and install new videoconferencing equipment at the Ina Campus, Murphy-Wall Pinckneyville Campus, Waltonville HS, Webber HS, Wayne City HS, Hamilton County HS, and Thompsonville HS. RLC's share of funding is \$105,047 of a total award of \$439,425.	11/1/14-10/31/17	Yes	Quarterly
Economic Development Administration, DOC	11.307	\$ 94,926.00	\$ 94,926.00	Nielsen	Develop hybrid Courses, Remodel existing space in ATC, Purchase robots and simulation software	10/1/2015-9/30/2016	Yes	Semi annual and final
INCCRRA-Gateway To OP		\$ 7,500.00						
Federal workstudy		\$ 55,605.00	\$ 55,601.00					
ICCB Pathways to Results Year 2		\$ 15,000		Shelton	Aims to assemble a meaningful plan for implementing an evidence based improvement that addresses documented gaps in student equitable outcomes	7/1/2017-6/30/2018	Yes	Midterm and Final
ICCB Special Populations Grant		\$ 10,000		Shelton	Increase nontraditional by gender participation (Perkins 5P1 Performance Measure)	7/1/2017-6/30/2018	Yes	Midterm and Final
ICCB Dual Credit Enhancement Grant		\$ 10,000		Margo Wagner	Equipping distance learning room at Zeigler-Royalton High School	7/1/2017-6/30/2018	Yes	Midterm and Final
Total		\$ 9,703,664.60						

Source: Kathy Evans, Title III Curriculum Specialist

A	
Academic Honors	46
Academic Warnings.....	46
Active Clubs.....	45
Awards	87

B	
Board of Trustees	15

C	
Chargeback/Contractual Agreements	52
Common Outcome.....	6
Completion.....	62
Completion Detail by Degree/Certificate Type	64
Completions by Degree/Certificate Type	63
Completions by Ethnicity	62
Completions by Gender	62
Completions by Term.....	62
Cost of Attendance	20
Credit Hours	35
Credit Hours Attempted vs Credit Hours Earned	37
Credit Hours by Enrollment Status (Full-Time/Part-Time, duplicated)	35
Critical Thinking	See Institutional Outcomes

D	
District Economic Information	9
District Population	8
Diversity of Culture	6
Diversity of Purpose	6
Dual Credit by FY and High School	38
Dual Credit Textbook Savings Report	40
Dual Enrollment	43

E	
Employees	83
Employment Information.....	9
Enrollment by County – In-District.....	51
Enrollment by County – Top 15 Counties.....	51
Enrollment by GPA.....	57
Enrollment by Highest Degree Previously Earned.....	57
Enrollment by Residency.....	50
Enrollment by State.....	50
Enrollment by Student Intent.....	55
Enrollment by Student Level	55

F	
Faculty/Staff Excellence Awards	87
Financial Aid	59

Financial Aid by Award Type	59
Fines and Financial Obligations	31
FTE.....	35
FTE by Fiscal Year	35

G	
GPA.....	57
Graduation Rates	68
Grant Awards	96
Grants - FY 2017-2018.....	96

H	
Headcount attempted vs. Earned	34
Headcount by Enrollment Status.....	33
Headcount by Enrollment Status (as percentage of total enrollment).....	33
History of Rend Lake College Board of Trustees.....	16
Hybrid Course Offerings/Enrollment.....	44

I	
ICCB – Summary of Opening Fall Term FTE Students – FY2006 – FY2015.....	78
ICCB Facts and Figures.....	76
ICCB Quick Facts	80
ICCB Reimbursable Credit Hours – FY2015.....	77
Information Technology	90
Initial Enrollment by Degree/Certificate Objective	56
Initial Enrollment by PCS Code	56
Institutional Data Book.....	13
Institutional Outcomes.....	5
Instructional Employees	83
Internal Affairs.....	83
IT - Murphy Wall.....	94
IT - Off Campus.....	94
IT - RLC Market Place.....	94

L	
Lab/Course Fees	21
Learning Resource Center	88

M	
Miscellaneous fees and options	30
Mission	5

N	
Non-Payment Fee.....	31

O

Online and Hybrid Fee30
 Online Course Offerings/Enrollment43
Oral Communication See Institutional Outcomes
 Organizational Chart84

P

Parking and/or Speeding fines31
 Payment Plan30
 Population by County8
 Presidential Welcome14
Problem-Solving See Institutional Outcomes

R

Rend Lake College Organizational Chart84
 Retention Rates61

S

Section Size45
 Security Report70
 Special Program Fees30
 Student by Generation55
 Student Consumer Information70
 Student Demographics49
 Student Right To Know72
 Student to Faculty Ratio83
 Students by Age49
 Students by Ethnicity49
 Students by Gender49
 Summary Profile of the Illinois Public Community Colleges76

T

Textbook Return Policy 30
 Textbooks 30
 The District 7
 The Faculty and Staff 13
 The Organization 6
 The Students 13
 Total Completers 62
 Total Credit Hours by Fiscal Year 35
 Total Credit Hours by Fiscal Year (reimbursable) 36
 Total Credit Hours by Term 35
 Total Employees by Status 83
 Total Reimbursable Credit Hours (by term) 36
 Transcript Fee 30
 Transfer Plan 56
 Tuition and Fees 19
 Tuition Comparison 19
 Tuition per Credit Hour 19
 Tutoring Center 47

U

Unemployment Rates by County 8

V

Value Statement 5
 Veteran Status 55

W

Who We Are 5
 Who We Serve 5
Written Communication See Institutional Outcomes

